

## ARG43625 anti-ADAM28 antibody

Package: 50 µg  
Store at: -20°C

### Summary

Product Description	Rabbit Polyclonal antibody recognizes ADAM28
Tested Reactivity	Rat
Predict Reactivity	Ms
Tested Application	IHC-P, WB
Host	Rabbit
Clonality	Polyclonal
Isotype	IgG
Target Name	ADAM28
Species	Rat
Immunogen	Recombinant fragment corresponding to a.a. K26-K195 of Rat ADAM28.
Conjugation	Un-conjugated
Alternate Names	Epididymal metalloproteinase-like, disintegrin-like, and cysteine-rich protein II; eMDC II; EC 3.4.24.-; MDC-L; MDCL; Metalloproteinase-like, disintegrin-like, and cysteine-rich protein L; Disintegrin and metalloproteinase domain-containing protein 28; eMDCII; ADAM 28

### Application Instructions

Application table	Application	Dilution
	IHC-P	1:200 - 1:1000
	WB	1:500 - 1:2000
Application Note	* The dilutions indicate recommended starting dilutions and the optimal dilutions or concentrations should be determined by the scientist.	
Observed Size	87, 61 kDa	

### Properties

Form	Liquid
Purification	Affinity purification with immunogen.
Buffer	0.9% NaCl, 0.2% Na2HPO4, 0.05% Sodium azide and 4% Trehalose.
Preservative	0.05% Sodium azide
Stabilizer	4% Trehalose
Concentration	0.5 mg/ml
Storage instruction	For continuous use, store undiluted antibody at 2-8°C for up to a week. For long-term storage, aliquot and store at -20°C or below. Storage in frost free freezers is not recommended. Avoid repeated freeze/thaw cycles. Suggest spin the vial prior to opening. The antibody solution should be gently mixed

before use.

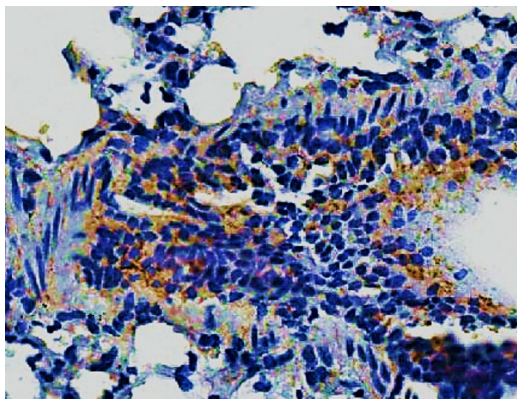
#### Note

For laboratory research only, not for drug, diagnostic or other use.

## Bioinformation

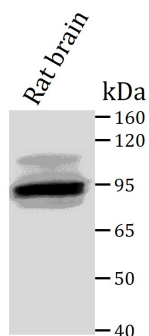
Gene Symbol	Adam28
Gene Full Name	ADAM metallopeptidase domain 28
Background	This gene encodes a member of the ADAM (a disintegrin and metalloprotease domain) family. Members of this family are membrane-anchored proteins structurally related to snake venom disintegrins, and have been implicated in a variety of biological processes involving cell-cell and cell-matrix interactions, including fertilization, muscle development, and neurogenesis. The protein encoded by this gene is a lymphocyte-expressed ADAM protein. This gene is present in a gene cluster with other members of the ADAM family on chromosome 8. Alternative splicing results in multiple transcript variants. [provided by RefSeq, Jan 2015]
Function	May play a role in the adhesive and proteolytic events that occur during lymphocyte emigration or may function in ectodomain shedding of lymphocyte surface target proteins, such as FASL and CD40L. May be involved in sperm maturation. [UniProt]
Calculated Mw	87 kDa
PTM	Pro-domain removal and maturation may be, at least in part, autocatalytic. [UniProt]
Cellular Localization	Cell membrane; Membrane; Secreted

## Images



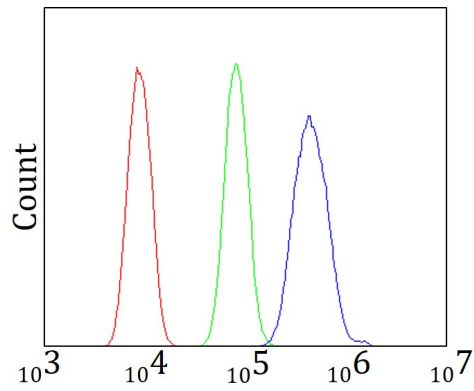
ARG43625 anti-ADAM28 antibody IHC-P image

Immunohistochemistry: Formalin-fixed and paraffin-embedded mouse lung tissue blocked with 10% goat serum, then stained with ARG43625 anti-ADAM28 antibody at 1:500 dilution overnight at 4°C. Antigen Retrieval: Heat mediated was performed using EDTA buffer (pH 8.0).



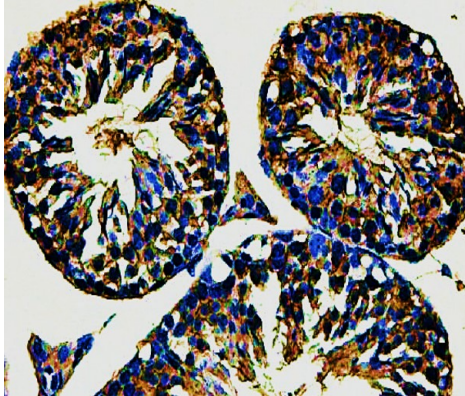
ARG43625 anti-ADAM28 antibody WB image

Western blot: Rat brain tissue lysates stained with ARG43625 anti-ADAM28 antibody at 1:1000 dilution.



#### ARG43625 anti-ADAM28 antibody IHC-P image FACS image

Flow Cytometry: HEPA1-6 cells were stained with ARG43625 anti-ADAM28 antibody at 1:500 dilution,  $1 \mu\text{g} / 10^6$ .



#### ARG43625 anti-ADAM28 antibody IHC-P image

Immunohistochemistry: Formalin-fixed and paraffin-embedded rat gastric tissue blocked with 10% goat serum, then stained with ARG43625 anti-ADAM28 antibody at 1:500 dilution overnight at  $4^{\circ}\text{C}$ . Antigen Retrieval: Heat mediated was performed using EDTA buffer (pH 8.0).