

ARG43620 anti-TCP1 beta antibody

Package: 50 µg
Store at: -20°C

Summary

Product Description	Rabbit Polyclonal antibody recognizes TCP1 beta
Tested Reactivity	Hu, Ms, Rat
Tested Application	FACS, ICC/IF, IHC-P, WB
Host	Rabbit
Clonality	Polyclonal
Isotype	IgG
Target Name	TCP1 beta
Species	Human
Immunogen	Recombinant protein corresponding to a.a. E414-C535 of Human TCP1 beta.
Conjugation	Un-conjugated
Alternate Names	HEL-S-100n; CCT-beta; PRO1633; CCTB; 99D8.1; TCP-1-beta; T-complex protein 1 subunit beta

Application Instructions

Application table	Application	Dilution
	FACS	1 - 3 µg / 1X10 ⁶ cells
	ICC/IF	1:50 - 1:250
	IHC-P	1:50 - 1:500
	WB	1:500 - 1:2500
Application Note	IHC-P: Antigen Retrieval: Boil tissue section in citrate buffer (pH 6.0) for 20 min. * The dilutions indicate recommended starting dilutions and the optimal dilutions or concentrations should be determined by the scientist.	
Observed Size	57 kDa	

Properties

Form	Liquid
Purification	Affinity purification with immunogen.
Buffer	0.9% NaCl, 0.2% Na ₂ HPO ₄ , 0.05% Sodium azide and 5% BSA.
Preservative	0.05% Sodium azide
Stabilizer	5% BSA
Concentration	0.5 mg/ml
Storage instruction	For continuous use, store undiluted antibody at 2-8°C for up to a week. For long-term storage, aliquot and store at -20°C. Storage in frost free freezers is not recommended. Avoid repeated freeze/thaw

cycles. Suggest spin the vial prior to opening. The antibody solution should be gently mixed before use.

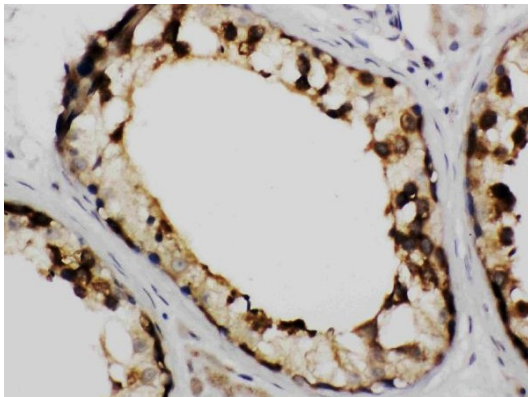
Note

For laboratory research only, not for drug, diagnostic or other use.

Bioinformation

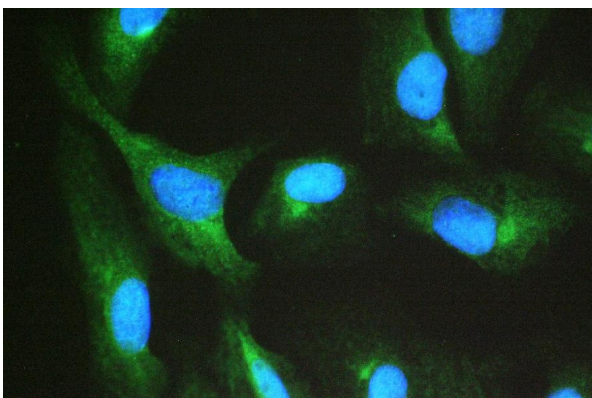
Gene Symbol	CCT2
Gene Full Name	chaperonin containing TCP1, subunit 2 (beta)
Background	The protein encoded by this gene is a molecular chaperone that is a member of the chaperonin containing TCP1 complex (CCT), also known as the TCP1 ring complex (TRiC). This complex consists of two identical stacked rings, each containing eight different proteins. Unfolded polypeptides enter the central cavity of the complex and are folded in an ATP-dependent manner. The complex folds various proteins, including actin and tubulin. Two transcript variants encoding different isoforms have been found for this gene. [provided by RefSeq, Nov 2010]
Function	Molecular chaperone; assists the folding of proteins upon ATP hydrolysis. As part of the BBS/CCT complex may play a role in the assembly of BBSome, a complex involved in ciliogenesis regulating transports vesicles to the cilia. Known to play a role, in vitro, in the folding of actin and tubulin. [UniProt]
Calculated Mw	57 kDa
PTM	Acetylation; Isopeptide bond; Phosphoprotein; Ubl conjugation
Cellular Localization	Cytoplasm. [UniProt]

Images



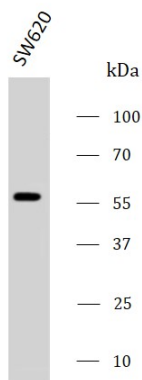
ARG43620 anti-TCP1 beta antibody IHC-P image

Immunohistochemistry: Human testis stained with ARG43620 anti-TCP1 beta antibody at 1 µg/ml dilution.



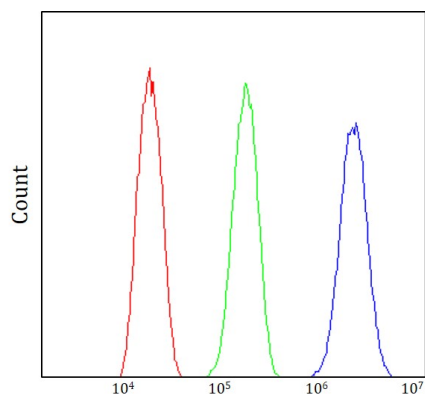
ARG43620 anti-TCP1 beta antibody ICC/IF image

Immunofluorescence: U2OS stained with ARG43620 anti-TCP1 beta antibody at 2 µg/ml dilution.



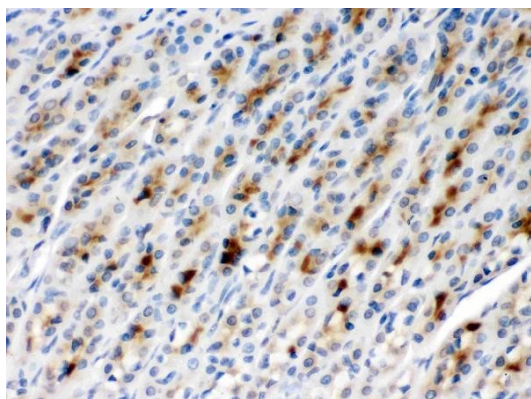
ARG43620 anti-TCP1 beta antibody WB image

Western blot: SW620 stained with ARG43620 anti-TCP1 beta antibody at 0.5 $\mu\text{g}/\text{mL}$ dilution.



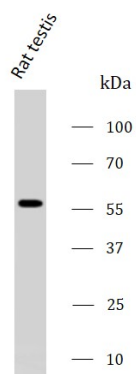
ARG43620 anti-TCP1 beta antibody FACS image

Flow Cytometry: U251 stained with ARG43620 anti-TCP1 beta antibody at 1 μg / 10^6 cells dilution.



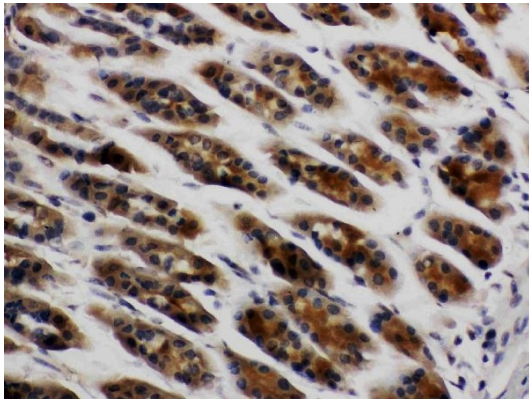
ARG43620 anti-TCP1 beta antibody IHC-P image

Immunohistochemistry: Rat gaster stained with ARG43620 anti-TCP1 beta antibody at 1 $\mu\text{g}/\text{ml}$ dilution.



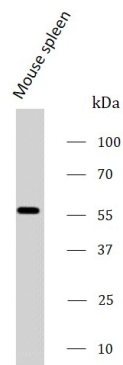
ARG43620 anti-TCP1 beta antibody WB image

Western blot: Rat testis stained with ARG43620 anti-TCP1 beta antibody at 0.5 $\mu\text{g}/\text{mL}$ dilution.



ARG43620 anti-TCP1 beta antibody IHC-P image

Immunohistochemistry: Mouse gaster stained with ARG43620 anti-TCP1 beta antibody at 1 $\mu\text{g}/\text{ml}$ dilution.



ARG43620 anti-TCP1 beta antibody WB image

Western blot: Mouse spleen stained with ARG43620 anti-TCP1 beta antibody at 0.5 $\mu\text{g}/\text{mL}$ dilution.