

ARG43578 anti-Cyclin B1 phospho (Ser126) antibody

Package: 100 µl
Store at: -20°C

Summary

Product Description	Rabbit Polyclonal antibody recognizes Cyclin B1 phospho (Ser126).
Tested Reactivity	Hu
Tested Application	IP, WB
Host	Rabbit
Clonality	Polyclonal
Isotype	IgG
Target Name	Cyclin B1
Species	Human
Immunogen	Synthetic Phosphospecific peptide around phospho (Ser126) of Human Cyclin B1.
Conjugation	Un-conjugated
Alternate Names	CCNB

Application Instructions

Application table	Application	Dilution
	IP	1:10 - 1:30
	WB	1:500 - 1:2000
Application Note	* The dilutions indicate recommended starting dilutions and the optimal dilutions or concentrations should be determined by the scientist.	

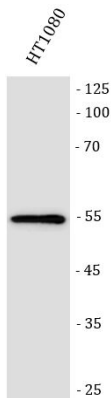
Properties

Form	Liquid
Purification	Affinity purified.
Buffer	50 mM Tris-Glycine (pH 7.4), 150 mM NaCl, 0.01% Sodium azide, 40% Glycerol and 0.05% BSA.
Preservative	0.01% Sodium azide
Stabilizer	40% Glycerol and 0.05% BSA
Concentration	Batch dependent
Storage instruction	For continuous use, store undiluted antibody at 2-8°C for up to a week. For long-term storage, aliquot and store at -20°C or below. Storage in frost free freezers is not recommended. Avoid repeated freeze/thaw cycles. Suggest spin the vial prior to opening. The antibody solution should be gently mixed before use.
Note	For laboratory research only, not for drug, diagnostic or other use.

Bioinformation

Gene Symbol	CCNB1
Gene Full Name	cyclin B1
Background	The protein encoded by this gene is a regulatory protein involved in mitosis. The gene product complexes with p34(cdc2) to form the maturation-promoting factor (MPF). Two alternative transcripts have been found, a constitutively expressed transcript and a cell cycle-regulated transcript, that is expressed predominantly during G2/M phase. The different transcripts result from the use of alternate transcription initiation sites. [provided by RefSeq, Jul 2008]
Function	Essential for the control of the cell cycle at the G2/M (mitosis) transition. [UniProt]

Images



ARG43578 anti-Cyclin B1 phospho (Ser126) antibody WB image

Western blot: HT1080 stained with ARG43578 anti-Cyclin B1 phospho (Ser126) antibody.