

ARG43476 anti-NFE2L3 / Nrf 3 antibody

Package: 100 µl
Store at: -20°C

Summary

Product Description	Rabbit Polyclonal antibody recognizes NFE2L3 / Nrf 3.
Tested Reactivity	Hu, Ms, Rat
Tested Application	IHC-P, WB
Host	Rabbit
Clonality	Polyclonal
Isotype	IgG
Target Name	NFE2L3 / Nrf 3
Species	Human
Immunogen	Purified recombinant protein corresponding to human NFE2L3 / Nrf 3.
Conjugation	Un-conjugated
Alternate Names	NRF3

Application Instructions

Application table	Application	Dilution
	IHC-P	1:50 - 1:200
	WB	1:500 - 1:2000
Application Note	* The dilutions indicate recommended starting dilutions and the optimal dilutions or concentrations should be determined by the scientist.	

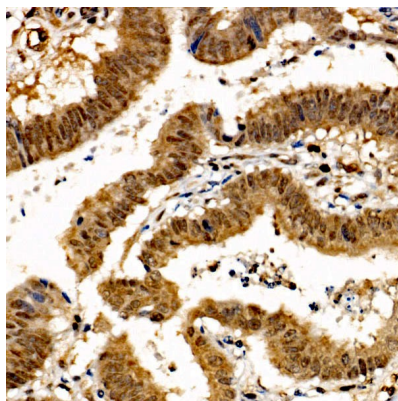
Properties

Form	Liquid
Purification	Affinity purified.
Buffer	PBS (pH 7.3), 0.02% Sodium azide and 50% Glycerol.
Preservative	0.02% Sodium azide
Stabilizer	50% Glycerol
Storage instruction	For continuous use, store undiluted antibody at 2-8°C for up to a week. For long-term storage, aliquot and store at -20°C or below. Storage in frost free freezers is not recommended. Avoid repeated freeze/thaw cycles. Suggest spin the vial prior to opening. The antibody solution should be gently mixed before use.
Note	For laboratory research only, not for drug, diagnostic or other use.

Bioinformation

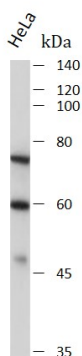
Gene Symbol	NFE2L3
Gene Full Name	nuclear factor, erythroid 2-like 3
Background	This gene encodes a member of the cap 'n' collar basic-region leucine zipper family of transcription factors. The encoded protein heterodimerizes with small musculoaponeurotic fibrosarcoma factors to bind antioxidant response elements in target genes. This protein is a membrane bound glycoprotein that is targeted to the endoplasmic reticulum and the nuclear envelope. Pseudogenes of this gene are found on chromosomes 16, 17, and 18. [provided by RefSeq, Mar 2009]
Function	Activates erythroid-specific, globin gene expression. [UniProt]

Images



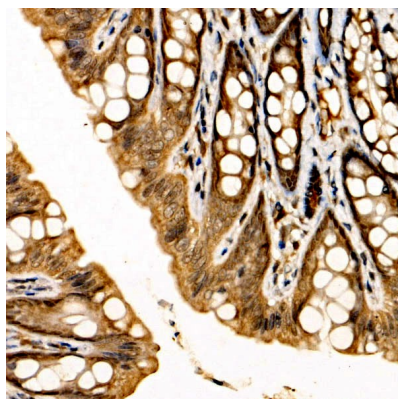
ARG43476 anti-NFE2L3 / Nrf 3 antibody IHC-P image

Immunohistochemistry: Human colon stained with ARG43476 anti-NFE2L3 / Nrf 3 antibody at 1:100 dilution.



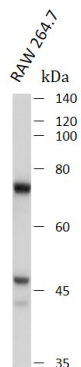
ARG43476 anti-NFE2L3 / Nrf 3 antibody WB image

Western blot: HeLa stained with ARG43476 anti-NFE2L3 / Nrf 3 antibody at 1:1000 dilution.



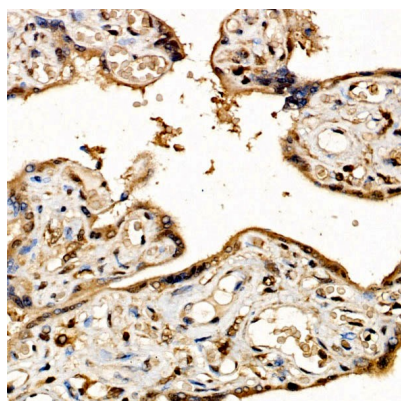
ARG43476 anti-NFE2L3 / Nrf 3 antibody IHC-P image

Immunohistochemistry: Rat colon stained with ARG43476 anti-NFE2L3 / Nrf 3 antibody at 1:100 dilution.



ARG43476 anti-NFE2L3 / Nrf 3 antibody WB image

Western blot: RAW 264.7 stained with ARG43476 anti-NFE2L3 / Nrf 3 antibody at 1:1000 dilution.



ARG43476 anti-NFE2L3 / Nrf 3 antibody IHC-P image

Immunohistochemistry: Human placenta stained with ARG43476 anti-NFE2L3 / Nrf 3 antibody at 1:100 dilution.