

## ARG43453 anti-CD206 / MMR antibody

Package: 50 µg  
Store at: -20°C

### Summary

Product Description	Rabbit Polyclonal antibody recognizes CD206 / MMR
Tested Reactivity	Hu, Ms
Predict Reactivity	Rat
Tested Application	IHC-P, WB
Host	Rabbit
Clonality	Polyclonal
Isotype	IgG
Target Name	CD206 / MMR
Species	Human
Immunogen	Recombinant fusion protein corresponding to a.a. 21-1140 of Human CD206 / MMR.
Conjugation	Un-conjugated
Alternate Names	CLEC13D; C-type lectin domain family 13 member D; Macrophage mannose receptor 1-like protein 1; C-type lectin domain family 13 member D-like; MMR; CLEC13DL; CD206; Macrophage mannose receptor 1; bA541I19.1; CD antigen CD206; MRC1L1

### Application Instructions

Application table	Application	Dilution
	IHC-P	0.5 - 1 µg/ml
	WB	0.25-0.5 µg/ml
Application Note	* The dilutions indicate recommended starting dilutions and the optimal dilutions or concentrations should be determined by the scientist.	
Positive Control	HEK293, RAW264.7	
Observed Size	~185 kDa	

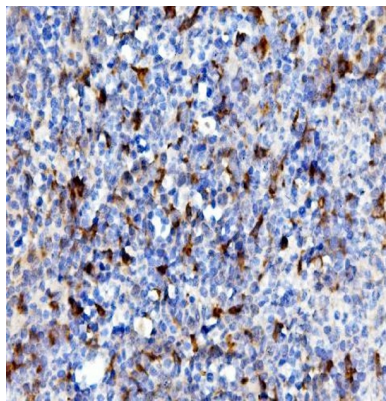
### Properties

Form	Liquid
Purification	Affinity purification with immunogen.
Buffer	0.9% NaCl, 0.2% Na <sub>2</sub> HPO <sub>4</sub> , 0.05% Sodium azide and 4% Trehalose.
Preservative	0.05% Sodium azide
Stabilizer	4% Trehalose
Concentration	0.5 mg/ml

Storage instruction	For continuous use, store undiluted antibody at 2-8°C for up to a week. For long-term storage, aliquot and store at -20°C or below. Storage in frost free freezers is not recommended. Avoid repeated freeze/thaw cycles. Suggest spin the vial prior to opening. The antibody solution should be gently mixed before use.
Note	For laboratory research only, not for drug, diagnostic or other use.

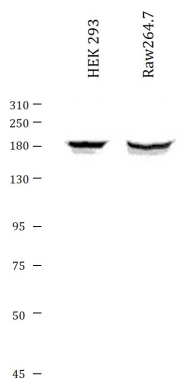
## Bioinformation

Gene Symbol	MRC1
Gene Full Name	mannose receptor, C type 1
Background	The recognition of complex carbohydrate structures on glycoproteins is an important part of several biological processes, including cell-cell recognition, serum glycoprotein turnover, and neutralization of pathogens. CD206 / MMR is a type I membrane receptor that mediates the endocytosis of glycoproteins by macrophages. The protein has been shown to bind high-mannose structures on the surface of potentially pathogenic viruses, bacteria, and fungi so that they can be neutralized by phagocytic engulfment. [provided by RefSeq, Sep 2015]
Function	<p>CD206 / MMR mediates the endocytosis of glycoproteins by macrophages. Binds both sulfated and non-sulfated polysaccharide chains.</p> <p>(Microbial infection) Acts as phagocytic receptor for bacteria, fungi and other pathogens.</p> <p>(Microbial infection) Acts as a receptor for Dengue virus envelope protein E.</p> <p>(Microbial infection) Interacts with Hepatitis B virus envelope protein. [UniProt]</p>
Highlight	<p>Related products:</p> <p><a href="#">CD206 antibodies</a>; <a href="#">CD206 ELISA Kits</a>; <a href="#">CD206 Duos / Panels</a>; <a href="#">Anti-Rabbit IgG secondary antibodies</a>;</p> <p>Related news:</p> <p><a href="#">New antibody panels and duos for Tumor immune microenvironment</a></p> <p><a href="#">Tumor-Infiltrating Lymphocytes (TILs)</a></p> <p><a href="#">Anti-SerpinB9 therapy, a new strategy for cancer therapy</a></p> <p><a href="#">RIP1 activation and pathogenesis of NASH</a></p>
Research Area	Immune System antibody; M1/M2/TAM Marker antibody; Macrophage Marker antibody; M2 Macrophage Marker antibody
Calculated Mw	166 kDa
PTM	Disulfide bond, Glycoprotein
Cellular Localization	Endosome membrane; Single-pass type I membrane protein. Cell membrane; Single-pass type I membrane protein. [UniProt]



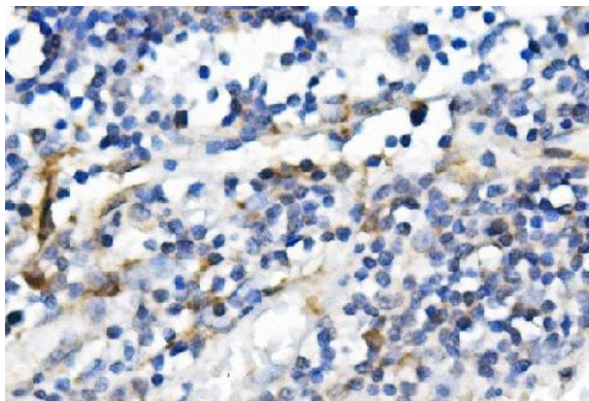
ARG43453 anti-CD206 / MMR antibody IHC-P image

Immunohistochemistry: Paraffin-embedded Mouse spleen tissue. Antigen Retrieval: Heat mediation was performed in EDTA buffer (pH 8.0). The tissue section was blocked with 10% goat serum. The tissue section was then stained with 1  $\mu$ g/ml of ARG43453 anti-CD206 / MMR antibody, overnight at 4°C.



ARG43453 anti-CD206 / MMR antibody WB image

Western blot: 50  $\mu$ g of samples under reducing conditions. HEK293 and Raw264.7 whole cell lysates stained with 0.5  $\mu$ g/ml of ARG43453 anti-CD206 / MMR antibody, overnight at 4°C.



ARG43453 anti-CD206 / MMR antibody IHC-P image

Immunohistochemistry: Paraffin-embedded Human appendicitis tissue. Antigen Retrieval: Heat mediation was performed in EDTA buffer (pH 8.0). The tissue section was blocked with 10% goat serum. The tissue section was then stained with 1  $\mu$ g/ml of ARG43453 anti-CD206 / MMR antibody, overnight at 4°C.