

ARG43434 anti-ADAM12 antibody

Package: 100 µl
Store at: -20°C

Summary

Product Description	Rabbit Polyclonal antibody recognizes ADAM12
Tested Reactivity	Hu, Ms, Rat
Tested Application	ICC/IF, IHC-P, WB
Host	Rabbit
Clonality	Polyclonal
Isotype	IgG
Target Name	ADAM12
Species	Human
Immunogen	Recombinant fusion protein corresponding to aa. 589-738 of Human ADAM12 (NP_067673.2).
Conjugation	Un-conjugated
Alternate Names	MCMP; ADAM 12; MCMPLtna; EC 3.4.24.-; Disintegrin and metalloproteinase domain-containing protein 12; Meltrin-alpha; MLTN; MLTNA; CAR10; ADAM12-OT1

Application Instructions

Application table	Application	Dilution
	ICC/IF	1:50 - 1:200
	IHC-P	1:50 - 1:200
	WB	1:500 - 1:2000
Application Note	* The dilutions indicate recommended starting dilutions and the optimal dilutions or concentrations should be determined by the scientist.	
Positive Control	Mouse fat	
Observed Size	~ 100 kDa	

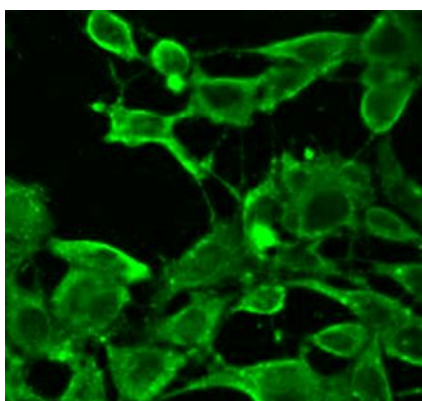
Properties

Form	Liquid
Purification	Affinity purified.
Buffer	PBS (pH 7.3), 0.02% Sodium azide and 50% Glycerol.
Preservative	0.02% Sodium azide
Stabilizer	50% Glycerol
Storage instruction	For continuous use, store undiluted antibody at 2-8°C for up to a week. For long-term storage, aliquot and store at -20°C. Storage in frost free freezers is not recommended. Avoid repeated freeze/thaw cycles. Suggest spin the vial prior to opening. The antibody solution should be gently mixed before use.

Bioinformation

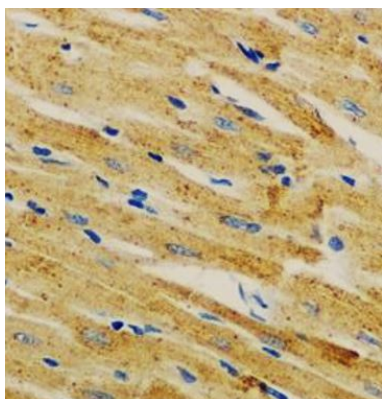
Gene Symbol	ADAM12
Gene Full Name	ADAM metallopeptidase domain 12
Background	This gene encodes a member of a family of proteins that are structurally related to snake venom disintegrins and have been implicated in a variety of biological processes involving cell-cell and cell-matrix interactions, including fertilization, muscle development, and neurogenesis. Expression of this gene has been used as a maternal serum marker for pre-natal development. Alternative splicing results in multiple transcript variants encoding different isoforms. Shorter isoforms are secreted, while longer isoforms are membrane-bound form. [provided by RefSeq, Jan 2014]
Function	Involved in skeletal muscle regeneration, specifically at the onset of cell fusion. Also involved in macrophage-derived giant cells (MGC) and osteoclast formation from mononuclear precursors (By similarity). [UniProt]
Calculated Mw	100 kDa
PTM	The precursor is cleaved by a furin endopeptidase. [UniProt]
Cellular Localization	Isoform 1: Cell membrane; Single-pass type I membrane protein. Isoform 2: Secreted. Isoform 3: Secreted. Isoform 4: Secreted. [UniProt]

Images



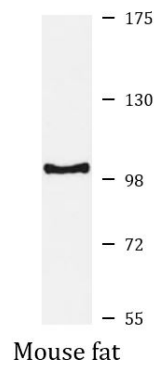
ARG43434 anti-ADAM12 antibody ICC/IF image

Immunofluorescence: NIH/3T3 cells stained with ARG43434 anti-ADAM12 antibody at 1:100 dilution.



ARG43434 anti-ADAM12 antibody IHC-P image

Immunohistochemistry: Paraffin-embedded Rat heart tissue stained with ARG43434 anti-ADAM12 antibody at 1:100 dilution.



ARG43434 anti-ADAM12 antibody WB image

Western blot: 25 µg of Mouse fat lysate stained with ARG43434 anti-ADAM12 antibody at 1:1000 dilution.