

ARG43361 anti-GDNF Receptor alpha 1 antibody

Package: 100 µl
Store at: -20°C

Summary

Product Description	Rabbit Polyclonal antibody recognizes GDNF Receptor alpha 1
Tested Reactivity	Hu, Ms, Rat
Tested Application	ICC/IF, IHC-P, WB
Host	Rabbit
Clonality	Polyclonal
Isotype	IgG
Target Name	GDNF Receptor alpha 1
Species	Human
Immunogen	Recombinant fusion protein corresponding to aa. 25-280 of Human GDNF Receptor alpha 1 (NP_665736.1).
Conjugation	Un-conjugated
Alternate Names	GDNFR-alpha-1; GDNFRA; GFR-ALPHA-1; RET ligand 1; GFR-alpha-1; RET1L; GDNF receptor alpha-1; TRNR1; TGF-beta-related neurotrophic factor receptor 1; RETL1; GDNFR; GDNF family receptor alpha-1

Application Instructions

Application table	Application	Dilution
	ICC/IF	1:50 - 1:200
	IHC-P	1:50 - 1:200
	WB	1:500 - 1:2000
Application Note	* The dilutions indicate recommended starting dilutions and the optimal dilutions or concentrations should be determined by the scientist.	

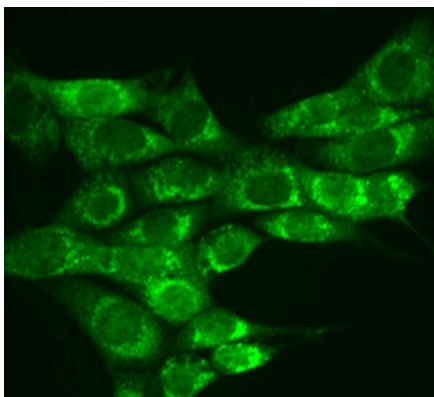
Properties

Form	Liquid
Purification	Affinity purified.
Buffer	PBS (pH 7.3), 0.02% Sodium azide and 50% Glycerol.
Preservative	0.02% Sodium azide
Stabilizer	50% Glycerol
Storage instruction	For continuous use, store undiluted antibody at 2-8°C for up to a week. For long-term storage, aliquot and store at -20°C. Storage in frost free freezers is not recommended. Avoid repeated freeze/thaw cycles. Suggest spin the vial prior to opening. The antibody solution should be gently mixed before use.
Note	For laboratory research only, not for drug, diagnostic or other use.

Bioinformation

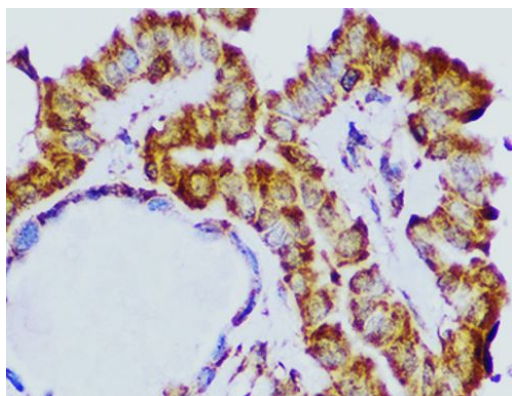
Gene Symbol	GFRA1
Gene Full Name	GDNF family receptor alpha 1
Background	This gene encodes a member of the glial cell line-derived neurotrophic factor receptor (GDNFR) family of proteins. The encoded preproprotein is proteolytically processed to generate the mature receptor. Glial cell line-derived neurotrophic factor (GDNF) and neurturin (NTN) are two structurally related, potent neurotrophic factors that play key roles in the control of neuron survival and differentiation. This receptor is a glycosylphosphatidylinositol (GPI)-linked cell surface receptor for both GDNF and NTN, and mediates activation of the RET tyrosine kinase receptor. This gene is a candidate gene for Hirschsprung disease. Alternative splicing results in multiple transcript variants, at least one of which encodes a preproprotein that is proteolytically processed. [provided by RefSeq, Jan 2016]
Function	Receptor for GDNF. Mediates the GDNF-induced autophosphorylation and activation of the RET receptor (By similarity). [UniProt]
Calculated Mw	51 kDa
Cellular Localization	Cell membrane; Lipid-anchor, GPI-anchor. [UniProt]

Images



ARG43361 anti-GDNF Receptor alpha 1 antibody ICC/IF image

Immunofluorescence: NIH/3T3 cells stained with ARG43361 anti-GDNF Receptor alpha 1 antibody at 1:100 dilution.



ARG43361 anti-GDNF Receptor alpha 1 antibody IHC-P image

Immunohistochemistry: Paraffin-embedded Human thyroid cancer tissue stained with ARG43361 anti-GDNF Receptor alpha 1 antibody at 1:100 dilution.