

ARG43343 anti-SARS-CoV-2 Spike protein (S2) antibody

Package: 100 µg
Store at: -20°C

Summary

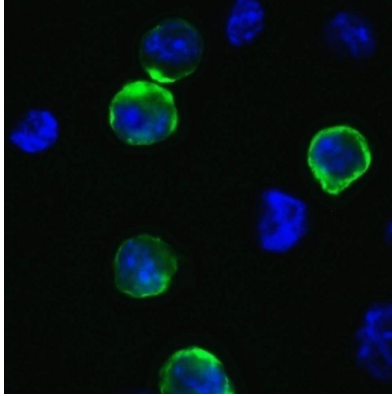
Product Description	Rabbit Polyclonal antibody recognizes SARS-CoV-2 Spike protein (S2)
Tested Reactivity	Virus
Tested Application	ICC/IF, IHC-P, WB
Host	Rabbit
Clonality	Polyclonal
Isotype	IgG
Target Name	SARS-CoV-2 Spike protein (S2)
Species	Virus
Immunogen	A 20-amino acid synthetic peptide within the last 50 amino acids of SARS-CoV-2 Spike protein (S2).
Conjugation	Un-conjugated

Application Instructions

Application table	Application	Dilution
	ICC/IF	1 µg/ml
	IHC-P	0.2 µg/ml
	WB	1 µg/ml
Application Note	IHC-P: Antigen Retrieval: Heat mediation was performed in Citrate buffer (pH 6.0). * The dilutions indicate recommended starting dilutions and the optimal dilutions or concentrations should be determined by the scientist.	

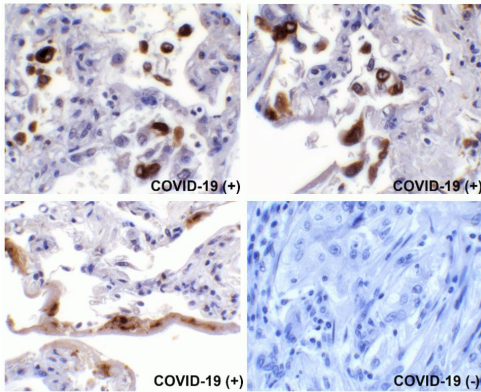
Properties

Form	Liquid
Purification	Affinity purification with immunogen.
Buffer	PBS and 0.02% Sodium azide.
Preservative	0.02% Sodium azide
Concentration	1 mg/ml
Storage instruction	For continuous use, store undiluted antibody at 2-8°C for up to a week. For long-term storage, aliquot and store at -20°C or below. Storage in frost free freezers is not recommended. Avoid repeated freeze/thaw cycles. Suggest spin the vial prior to opening. The antibody solution should be gently mixed before use.
Note	For laboratory research only, not for drug, diagnostic or other use.



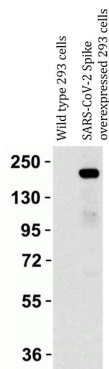
ARG43343 anti-SARS-CoV-2 Spike protein (S2) antibody ICC/IF image

Immunofluorescence: 4% Paraformaldehyde-fixed 293T cells stained with ARG43343 anti-SARS-CoV-2 Spike protein (S2) antibody (green) at 1 µg/ml dilution. DAPI (blue) for nuclear staining.



ARG43343 anti-SARS-CoV-2 Spike protein (S2) antibody IHC-P image

Immunohistochemistry: Formaldehyde-fixed and paraffin-embedded COVID-19 patient lung tissue. Tissue was blocked with 10% serum for 1 hour at RT. Antigen Retrieval: Heat mediation was performed in Citrate buffer (pH 6.0). Samples were stained with ARG43343 anti-SARS-CoV-2 Spike protein (S2) antibody at 0.5 µg/ml dilution, overnight at 4°C. Counter stained with Hematoxylin. Strong spike protein signal was observed in macrophages and airway epithelium of COVID-19 patient lung, but not in non-COVID-19 patient lung.



ARG43343 anti-SARS-CoV-2 Spike protein (S2) antibody WB image

Western blot: Wild type 293 cells (left) and SARS-CoV-2 Spike overexpressed 293 cells (right). 15 µg of cell lysates stained with ARG43343 anti-SARS-CoV-2 Spike protein (S2) antibody at 1 µg/ml dilution, 1 hour incubation at RT in 5% NFDN/TBST.