

ARG43303 anti-SARS-CoV-2 NSP5 / 3CLpro protein antibody

Package: 100 µg
Store at: -20°C

Summary

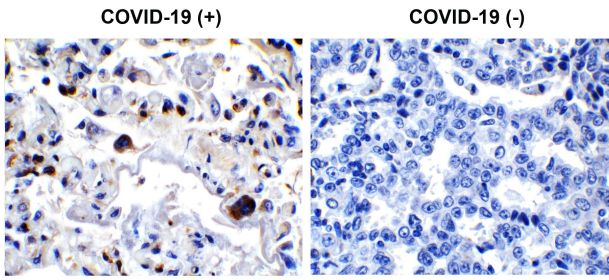
Product Description	Rabbit Polyclonal antibody recognizes SARS-CoV-2 NSP5 / 3CLpro protein
Tested Reactivity	Virus
Tested Application	ELISA, IHC-P, WB
Host	Rabbit
Clonality	Polyclonal
Isotype	IgG
Target Name	SARS-CoV-2 NSP5 / 3CLpro protein
Species	Virus
Immunogen	A 16-amino acid synthetic peptide within the first 50 amino acids of SARS-CoV-2 NSP5 / 3CLpro protein.
Conjugation	Un-conjugated

Application Instructions

Application table	Application	Dilution
	ELISA	Assay-dependent
	IHC-P	0.5 µg/ml
	WB	0.5 µg/ml
Application Note	* The dilutions indicate recommended starting dilutions and the optimal dilutions or concentrations should be determined by the scientist.	

Properties

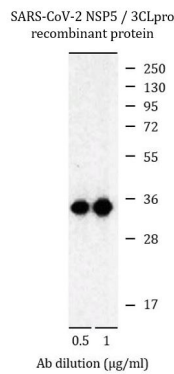
Form	Liquid
Purification	Affinity purification with immunogen.
Buffer	PBS and 0.02% Sodium azide.
Preservative	0.02% Sodium azide
Concentration	1 mg/ml
Storage instruction	For continuous use, store undiluted antibody at 2-8°C for up to a week. For long-term storage, aliquot and store at -20°C or below. Storage in frost free freezers is not recommended. Avoid repeated freeze/thaw cycles. Suggest spin the vial prior to opening. The antibody solution should be gently mixed before use.
Note	For laboratory research only, not for drug, diagnostic or other use.



ARG43303 anti-SARS-CoV-2 NSP5 / 3CLpro protein antibody IHC-P image

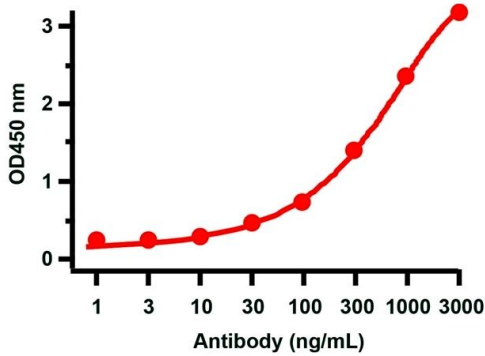
Immunohistochemistry: Paraffin-embedded COVID-19 patient lung tissue. Tissue was fixed with formaldehyde and blocked with 10% serum for 1 hour at RT. Antigen Retrieval: Heat mediation was performed in Citrate buffer (pH 6.0). Samples were stained with ARG43303 anti-SARS-CoV-2 NSP5 / 3CLpro protein antibody at 0.5 $\mu\text{g/ml}$ dilution, overnight at 4°C. Counter stained with Hematoxylin.

Strong signal of SARS-COV-2 NSP5 / 3Lpro protein was observed in macrophages of COVID-19 patient lung (left), but not in non-COVID-19 patient lung (right).



ARG43303 anti-SARS-CoV-2 NSP5 / 3CLpro protein antibody WB image

Western blot: 30 ng of SARS-CoV-2 NSP5 / 3CLpro recombinant protein stained with ARG43303 anti-SARS-CoV-2 NSP5 / 3CLpro protein antibody, for 1 hour at RT in 5% NFDm/TBST. Antibody dilutions: 0.5 $\mu\text{g/ml}$ (left) and 1 $\mu\text{g/ml}$ (right).



ARG43303 anti-SARS-CoV-2 NSP5 / 3CLpro protein antibody ELISA image

Direct ELISA: SARS-CoV-2 NSP5 / 3CLpro recombinant protein as coating antigen and serial diluted ARG43303 anti-SARS-CoV-2 NSP5 / 3CLpro protein antibody as capture antibody.