

## ARG43296 anti-PTCRA antibody

Package: 50 µg  
Store at: -20°C

### Summary

Product Description	Rabbit Polyclonal antibody recognizes PTCRA
Tested Reactivity	Hu
Tested Application	WB
Host	Rabbit
Clonality	Polyclonal
Isotype	IgG
Target Name	PTCRA
Species	Human
Immunogen	Recombinant protein corresponding to T24-T143 of Human PTCRA.
Conjugation	Un-conjugated
Alternate Names	pT-alpha; PT-ALPHA; pTa; Pre T-cell antigen receptor alpha; PTA; pT-alpha-TCR

### Application Instructions

Application table	Application	Dilution
	WB	1:500 - 1:2000
Application Note	* The dilutions indicate recommended starting dilutions and the optimal dilutions or concentrations should be determined by the scientist.	
Observed Size	~ 30 kDa	

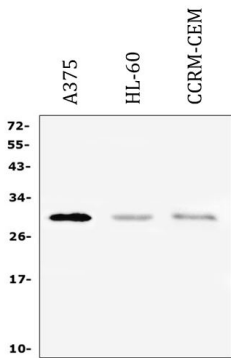
### Properties

Form	Liquid
Purification	Affinity purification with immunogen.
Buffer	0.2% Na <sub>2</sub> HPO <sub>4</sub> , 0.9% NaCl, 0.05% Sodium azide and 4% Trehalose.
Preservative	0.05% Sodium azide
Stabilizer	4% Trehalose
Concentration	0.5 mg/ml
Storage instruction	For continuous use, store undiluted antibody at 2-8°C for up to a week. For long-term storage, aliquot and store at -20°C or below. Storage in frost free freezers is not recommended. Avoid repeated freeze/thaw cycles. Suggest spin the vial prior to opening. The antibody solution should be gently mixed before use.
Note	For laboratory research only, not for drug, diagnostic or other use.

Bioinformation

Gene Symbol	PTCRA
Gene Full Name	pre T-cell antigen receptor alpha
Background	The protein encoded by this gene is a single-pass type I membrane protein that is found in immature but not mature T-cells. Along with TCRB and CD3 complex, the encoded protein forms the pre-T-cell receptor complex, which regulates early T-cell development. Four transcript variants encoding different isoforms have been found for this gene. [provided by RefSeq, Jul 2011]
Function	The pre-T-cell receptor complex (composed of PTCRA, TCRB and the CD3 complex) regulates early T-cell development. [UniProt]
Calculated Mw	29 kDa
Cellular Localization	Membrane; Single-pass type I membrane protein. [UniProt]

Images



ARG43296 anti-PTCRA antibody WB image

Western blot: 50 µg of sample under reducing conditions. A375, HL-60 and CCRM-CEM whole cell lysates stained with ARG43296 anti-PTCRA antibody at 0.5 µg/ml dilution, overnight at 4°C.