

## ARG43282 anti-SARS-CoV-2 Spike protein (S2) antibody

Package: 100 µg  
Store at: -20°C

### Summary

Product Description	Rabbit Polyclonal antibody recognizes SARS-CoV-2 Spike protein (S2)
Tested Reactivity	Virus
Tested Application	IHC-P, WB
Host	Rabbit
Clonality	Polyclonal
Isotype	IgG
Target Name	SARS-CoV-2 Spike protein (S2)
Species	Virus
Immunogen	A 16-amino acid synthetic peptide within aa. 1130-1180 of SARS-CoV-2 Spike protein.
Conjugation	Un-conjugated

### Application Instructions

Application table	Application	Dilution
	IHC-P	0.1 µg/ml
	WB	1 µg/ml
Application Note	IHC-P: Antigen Retrieval: Heat mediation was performed in Citrate buffer (pH 6.0). * The dilutions indicate recommended starting dilutions and the optimal dilutions or concentrations should be determined by the scientist.	

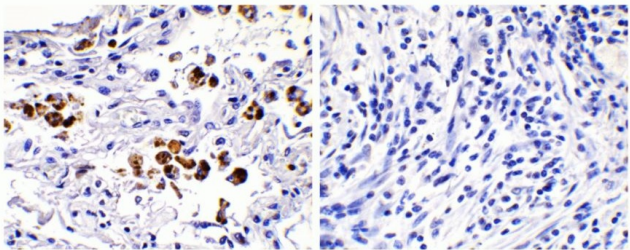
### Properties

Form	Liquid
Purification	Affinity purification with immunogen.
Buffer	PBS and 0.02% Sodium azide.
Preservative	0.02% Sodium azide
Concentration	1 mg/ml
Storage instruction	For continuous use, store undiluted antibody at 2-8°C for up to a week. For long-term storage, aliquot and store at -20°C or below. Storage in frost free freezers is not recommended. Avoid repeated freeze/thaw cycles. Suggest spin the vial prior to opening. The antibody solution should be gently mixed before use.
Note	For laboratory research only, not for drug, diagnostic or other use.

### Bioinformation

Background	Severe acute respiratory syndrome coronavirus 2 (SARS-CoV-2) is an enveloped, positive-sense, single-stranded RNA virus that causes coronavirus disease 2019 (COVID-19). Virus particles include the RNA genetic material and structural proteins needed for invasion of host cells. Once inside the cell the infecting RNA is used to encode structural proteins that make up virus particles, nonstructural proteins that direct virus assembly, transcription, replication and host control and accessory proteins whose function has not been determined.~ The structural proteins of SARS-CoV-2 include the envelope protein (E), spike or surface glycoprotein (S), membrane protein (M) and the nucleocapsid protein (N). The spike glycoprotein is found on the outside of the virus particle and gives coronavirus viruses their crown-like appearance. This glycoprotein mediates attachment of the virus particle and entry into the host cell. S protein is an important target for vaccine development, antibody therapies and diagnostic antigen-based tests.
Function	mediates fusion of the virion and cellular membranes by acting as a class I viral fusion protein. Under the current model, the protein has at least three conformational states: pre-fusion native state, pre-hairpin intermediate state, and post-fusion hairpin state. During viral and target cell membrane fusion, the coiled coil regions (heptad repeats) assume a trimer-of-hairpins structure, positioning the fusion peptide in close proximity to the C-terminal region of the ectodomain. The formation of this structure appears to drive apposition and subsequent fusion of viral and target cell membranes. [UniProt]

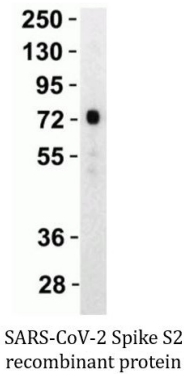
Images



ARG43282 anti-SARS-CoV-2 Spike protein (S2) antibody IHC-P image

Immunohistochemistry: Paraffin-embedded COVID-19 patient lung tissue. Tissue was fixed with formaldehyde and blocked with 10% serum for 1 hour at RT. Antigen Retrieval: Heat mediation was performed in Citrate buffer (pH 6.0). The tissue section was stained with ARG43282 anti-SARS-CoV-2 Spike protein (S2) antibody at 0.1 µg/ml dilution, overnight at 4°C.

Strong signal of SARS-COV-2 spike protein was observed in macrophage of COVID-19 patient lung (left), but not in non-COVID-19 patient lung (right).



ARG43282 anti-SARS-CoV-2 Spike protein (S2) antibody WB image

Western blot: 30 ng of SARS-CoV-2 Spike S2 recombinant protein stained with ARG43282 anti-SARS-CoV-2 Spike protein (S2) antibody at 1 µg/ml dilution, 1 hour incubation at RT in 5% NFDm/TBST.



Spike transfected 293

#### ARG43282 anti-SARS-CoV-2 Spike protein (S2) antibody WB image

Western blot: Spike transfected 293 cells. 10 µg of cell lysate stained with ARG43282 anti-SARS-CoV-2 Spike protein (S2) antibody at 1 µg/ml dilution, 1 hour incubation at RT in 5% NFDm/TBST.