

ARG43278 anti-UCHL1 / PGP9.5 antibody

Package: 100 µl
Store at: -20°C

Summary

Product Description	Rabbit Polyclonal antibody recognizes UCHL1 / PGP9.5
Tested Reactivity	Hu, Ms, Rat
Tested Application	FACS, ICC/IF, IHC-P, IP, WB
Host	Rabbit
Clonality	Polyclonal
Isotype	IgG
Target Name	UCHL1 / PGP9.5
Species	Human
Immunogen	Synthetic peptide derived from Human UCHL1 / PGP9.5.
Conjugation	Un-conjugated
Alternate Names	PGP95; UCH-L1; PGP9.5; PARK5; Ubiquitin thioesterase L1; HEL-117; Neuron cytoplasmic protein 9.5; Uch-L1; EC 6.-.-.-; PGP 9.5; Ubiquitin carboxyl-terminal hydrolase isozyme L1; NDGOA; EC 3.4.19.12

Application Instructions

Application table	Application	Dilution
	FACS	1:50
	ICC/IF	1:50 - 1:200
	IHC-P	1:50 - 1:200
	IP	1:50
	WB	1:500 - 1:2000
Application Note	* The dilutions indicate recommended starting dilutions and the optimal dilutions or concentrations should be determined by the scientist.	
Positive Control	293T	
Observed Size	~ 25 kDa	

Properties

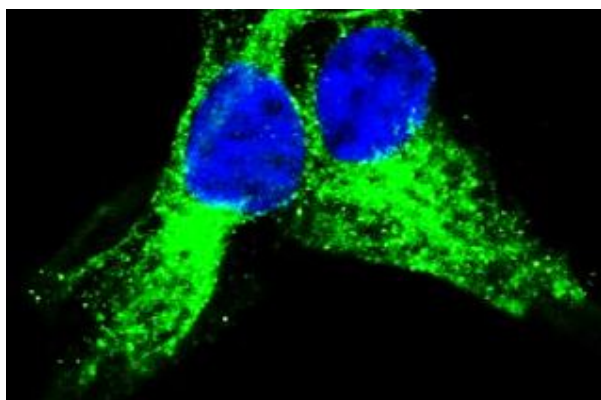
Form	Liquid
Purification	Affinity purified.
Buffer	PBS (pH 7.4), 150 mM NaCl, 0.02% Sodium azide and 50% Glycerol.
Preservative	0.02% Sodium azide
Stabilizer	50% Glycerol

Storage instruction	For continuous use, store undiluted antibody at 2-8°C for up to a week. For long-term storage, aliquot and store at -20°C. Storage in frost free freezers is not recommended. Avoid repeated freeze/thaw cycles. Suggest spin the vial prior to opening. The antibody solution should be gently mixed before use.
Note	For laboratory research only, not for drug, diagnostic or other use.

Bioinformation

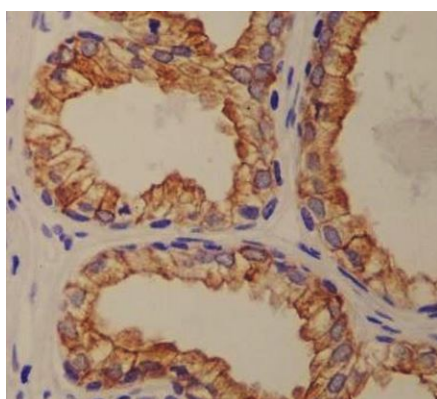
Gene Symbol	UCHL1
Gene Full Name	ubiquitin carboxyl-terminal esterase L1 (ubiquitin thiolesterase)
Background	The protein encoded by this gene belongs to the peptidase C12 family. This enzyme is a thiol protease that hydrolyzes a peptide bond at the C-terminal glycine of ubiquitin. This gene is specifically expressed in the neurons and in cells of the diffuse neuroendocrine system. Mutations in this gene may be associated with Parkinson disease. [provided by RefSeq, Sep 2009]
Function	Ubiquitin-protein hydrolase involved both in the processing of ubiquitin precursors and of ubiquitinated proteins (Probable). This enzyme is a thiol protease that recognizes and hydrolyzes a peptide bond at the C-terminal glycine of ubiquitin (PubMed:9774100, PubMed:8639624, PubMed:12408865, PubMed:23359680). Also binds to free monoubiquitin and may prevent its degradation in lysosomes (By similarity). The homodimer may have ATP-independent ubiquitin ligase activity (PubMed:12408865). [UniProt]
Calculated Mw	25 kDa
PTM	O-glycosylated. [UniProt]
Cellular Localization	Cytoplasm. Endoplasmic reticulum membrane; Lipid-anchor. Note=About 30% of total UCHL1 is associated with membranes in brain. [UniProt]

Images



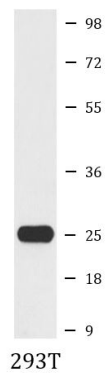
ARG43278 anti-UCHL1 / PGP9.5 antibody ICC/IF image

Immunofluorescence: U87-MG cells stained with ARG43278 anti-UCHL1 / PGP9.5 antibody (green).



ARG43278 anti-UCHL1 / PGP9.5 antibody IHC-P image

Immunohistochemistry: Paraffin-embedded Human prostate cancer tissue stained with ARG43278 anti-UCHL1 / PGP9.5 antibody.



ARG43278 anti-UCHL1 / PGP9.5 antibody WB image

Western blot: 293T cell lysate stained with ARG43278 anti-UCHL1 / PGP9.5 antibody.