

## ARG43267 anti-IQGAP1 antibody

Package: 100 µl  
Store at: -20°C

### Summary

|                     |  |
|---------------------|--|
| Product Description | Rabbit Polyclonal antibody recognizes GNAS2 / GNASs IQGAP1                             |
| Tested Reactivity   | Hu, Ms, Rat  |
| Tested Application  | ICC/IF, IHC-P, IP, WB  |
| Host                | Rabbit   |
| Clonality           | Polyclonal   |
| Isotype             | IgG  |
| Target Name         | IQGAP1   |
| Species             | Human  |
| Immunogen           | Recombinant fusion protein corresponding to aa. 500-750 of Human IQGAP1 (NP_003861.1). |
| Conjugation         | Un-conjugated  |
| Alternate Names     | SAR1; Ras GTPase-activating-like protein IQGAP1; HUMORFA01; p195                       |

### Application Instructions

| Application table | Application  | Dilution       |
|-------------------|--|----------------|
|                   | ICC/IF   | 1:50 - 1:200   |
|                   | IHC-P  | 1:50 - 1:200   |
|                   | IP   | 1:50 - 1:200   |
|                   | WB   | 1:500 - 1:2000 |
| Application Note  | * The dilutions indicate recommended starting dilutions and the optimal dilutions or concentrations should be determined by the scientist. |                |
| Positive Control  | HepG2  |                |
| Observed Size     | ~ 190 kDa  |                |

### Properties

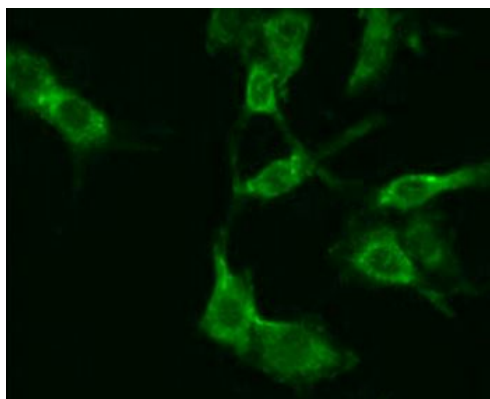
|                     |   |
|---------------------|---|
| Form                | Liquid  |
| Purification        | Affinity purified.  |
| Buffer              | PBS (pH 7.3), 0.02% Sodium azide and 50% Glycerol.  |
| Preservative        | 0.02% Sodium azide  |
| Stabilizer          | 50% Glycerol  |
| Storage instruction | For continuous use, store undiluted antibody at 2-8°C for up to a week. For long-term storage, aliquot and store at -20°C. Storage in frost free freezers is not recommended. Avoid repeated freeze/thaw cycles. Suggest spin the vial prior to opening. The antibody solution should be gently mixed before use. |

Note For laboratory research only, not for drug, diagnostic or other use.

## Bioinformation

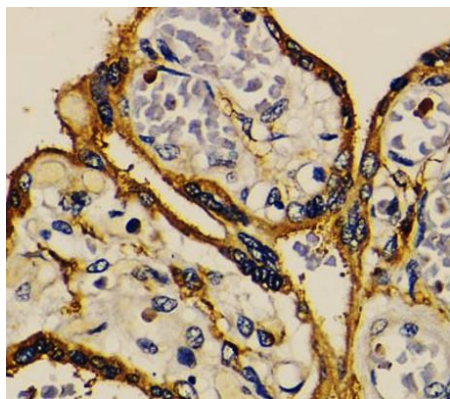
|                       |   |
|-----------------------|---|
| Gene Symbol           | IQGAP1  |
| Gene Full Name        | IQ motif containing GTPase activating protein 1   |
| Background            | This gene encodes a member of the IQGAP family. The protein contains four IQ domains, one calponin homology domain, one Ras-GAP domain and one WW domain. It interacts with components of the cytoskeleton, with cell adhesion molecules, and with several signaling molecules to regulate cell morphology and motility. Expression of the protein is upregulated by gene amplification in two gastric cancer cell lines. [provided by RefSeq, Jul 2008]  |
| Function              | Plays a crucial role in regulating the dynamics and assembly of the actin cytoskeleton. Binds to activated CDC42 but does not stimulate its GTPase activity. It associates with calmodulin. Could serve as an assembly scaffold for the organization of a multimolecular complex that would interface incoming signals to the reorganization of the actin cytoskeleton at the plasma membrane. May promote neurite outgrowth (PubMed:15695813). May play a possible role in cell cycle regulation by contributing to cell cycle progression after DNA replication arrest (PubMed:20883816). [UniProt] |
| Calculated Mw         | 189 kDa   |
| PTM                   | Phosphorylation of Ser-1443 by PKC/PRKCE prevents interaction between C1 and C2, allowing binding of nucleotide-free CDC42. Ser-1443 phosphorylation enhances the ability to promote neurite outgrowth. [UniProt]   |
| Cellular Localization | Cell membrane. Nucleus. Cytoplasm. Note=Subcellular distribution is regulated by the cell cycle, nuclear levels increase at G1/S phase (PubMed:20883816). [UniProt]   |

## Images



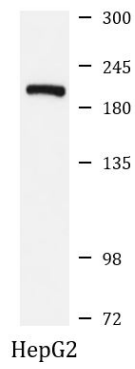
ARG43267 anti-IQGAP1 antibody ICC/IF image

Immunofluorescence: C6 cells stained with ARG43267 anti-IQGAP1 antibody at 1:100 dilution.



ARG43267 anti-IQGAP1 antibody IHC-P image

Immunohistochemistry: Paraffin-embedded Human placenta tissue stained with ARG43267 anti-IQGAP1 antibody at 1:200 dilution.



#### ARG43267 anti-IQGAP1 antibody WB image

Western blot: 25 µg of HepG2 cell lysate stained with ARG43267 anti-IQGAP1 antibody at 1:1000 dilution.