

ARG43200 anti-KIF21A antibody

Package: 100 µl
Store at: -20°C

Summary

Product Description	Rabbit Polyclonal antibody recognizes KIF21A
Tested Reactivity	Hu, Ms
Tested Application	ICC/IF, WB
Host	Rabbit
Clonality	Polyclonal
Isotype	IgG
Target Name	KIF21A
Species	Human
Immunogen	Recombinant fusion protein corresponding to aa. 1070-1270 of Human KIF21A (NP_001166935.1).
Conjugation	Un-conjugated
Alternate Names	Kinesin-like protein KIF2; FEOM1; Renal carcinoma antigen NY-REN-62; CFEOM1; Kinesin-like protein KIF21A; FEOM3A

Application Instructions

Predict Reactivity Note	Rat						
Application table	<table><thead><tr><th>Application</th><th>Dilution</th></tr></thead><tbody><tr><td>ICC/IF</td><td>1:50 - 1:200</td></tr><tr><td>WB</td><td>1:500 - 1:2000</td></tr></tbody></table>	Application	Dilution	ICC/IF	1:50 - 1:200	WB	1:500 - 1:2000
Application	Dilution						
ICC/IF	1:50 - 1:200						
WB	1:500 - 1:2000						
Application Note	* The dilutions indicate recommended starting dilutions and the optimal dilutions or concentrations should be determined by the scientist.						
Positive Control	HeLa						
Observed Size	210 kDa						

Properties

Form	Liquid
Purification	Affinity purified.
Buffer	PBS (pH 7.3), 0.02% Sodium azide and 50% Glycerol.
Preservative	0.02% Sodium azide
Stabilizer	50% Glycerol
Storage instruction	For continuous use, store undiluted antibody at 2-8°C for up to a week. For long-term storage, aliquot and store at -20°C. Storage in frost free freezers is not recommended. Avoid repeated freeze/thaw cycles. Suggest spin the vial prior to opening. The antibody solution should be gently mixed before use.

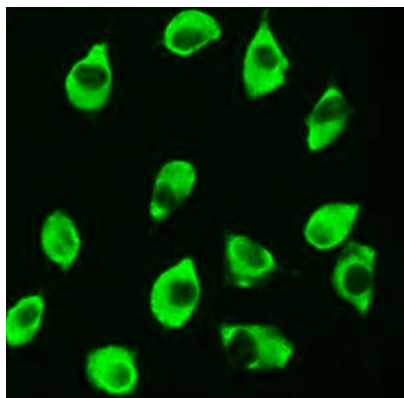
Note

For laboratory research only, not for drug, diagnostic or other use.

Bioinformation

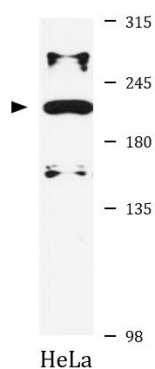
Gene Symbol	KIF21A
Gene Full Name	kinesin family member 21A
Background	This gene encodes a member of the KIF4 subfamily of kinesin-like motor proteins. The encoded protein is characterized by an N-terminal motor domain a coiled-coil stalk domain and a C-terminal WD-40 repeat domain. This protein may be involved in microtubule dependent transport. Mutations in this gene are the cause of congenital fibrosis of extraocular muscles-1. Alternate splicing results in multiple transcript variants. [provided by RefSeq, Mar 2010]
Function	Microtubule-binding motor protein probably involved in neuronal axonal transport. In vitro, has a plus-end directed motor activity (By similarity). [UniProt]
Calculated Mw	187 kDa
Cellular Localization	Cytoplasm, cytoskeleton. [UniProt]

Images



ARG43200 anti-KIF21A antibody ICC/IF image

Immunofluorescence: L929 cells stained with ARG43200 anti-KIF21A antibody at 1:100 dilution.



ARG43200 anti-KIF21A antibody WB image

Western blot: 25 µg of HeLa cell lysate stained with ARG43200 anti-KIF21A antibody at 1:1000 dilution.