

## ARG43102 anti-Semaphorin 6A antibody

Package: 50 µg  
Store at: -20°C

### Summary

Product Description	Rabbit Polyclonal antibody recognizes Semaphorin 6A
Tested Reactivity	Hu, Ms, Rat
Tested Application	FACS, IHC-P, WB
Host	Rabbit
Clonality	Polyclonal
Isotype	IgG
Target Name	Semaphorin 6A
Species	Human
Immunogen	Recombinant protein corresponding to H31-N306 of Human Semaphorin 6A.
Conjugation	Un-conjugated
Alternate Names	VIA; Semaphorin VIA; Semaphorin-6A; SEMAQ; Semaphorin-6A-1; SEMA; Sema VIA; SEMA6A-1; HT018; SEMA6A1

### Application Instructions

Application table	Application	Dilution
	FACS	1:150 - 1:500
	IHC-P	1:200 - 1:1000
	WB	1:500 - 1:2000
Application Note	IHC-P: Antigen Retrieval: Heat mediation was performed in EDTA buffer (pH 8.0). * The dilutions indicate recommended starting dilutions and the optimal dilutions or concentrations should be determined by the scientist.	
Observed Size	~ 110 kDa	

### Properties

Form	Liquid
Purification	Affinity purification with immunogen.
Buffer	0.2% Na2HPO4, 0.9% NaCl, 0.01% Sodium azide and 4% Trehalose.
Preservative	0.01% Sodium azide
Stabilizer	4% Trehalose
Concentration	0.5 mg/ml
Storage instruction	For continuous use, store undiluted antibody at 2-8°C for up to a week. For long-term storage, aliquot and store at -20°C or below. Storage in frost free freezers is not recommended. Avoid repeated freeze/thaw cycles. Suggest spin the vial prior to opening. The antibody solution should be gently mixed

before use.

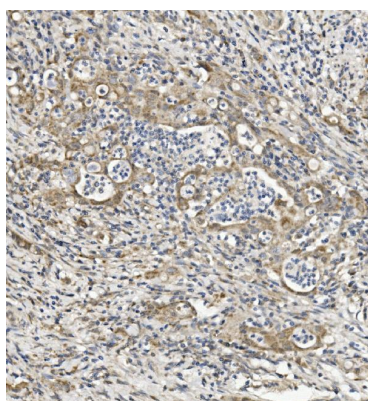
#### Note

For laboratory research only, not for drug, diagnostic or other use.

## Bioinformation

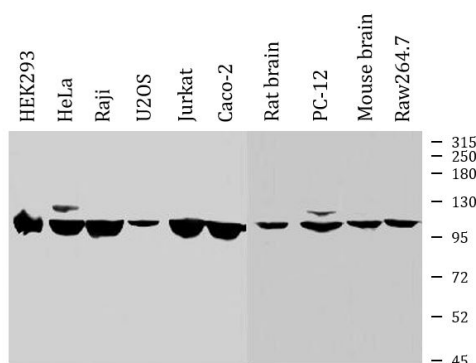
Gene Symbol	SEMA6A
Gene Full Name	sema domain, transmembrane domain (TM), and cytoplasmic domain, (semaphorin) 6A
Background	The transmembrane semaphorin SEMA6A is expressed in developing neural tissue and is required for proper development of the thalamocortical projection (Leighton et al., 2001 [PubMed 11242070]).[supplied by OMIM, Feb 2011]
Function	Cell surface receptor for PLXNA2 that plays an important role in cell-cell signaling. Required for normal granule cell migration in the developing cerebellum. Promotes reorganization of the actin cytoskeleton and plays an important role in axon guidance in the developing central nervous system. Can act as repulsive axon guidance cue. Has repulsive action towards migrating granular neurons. May play a role in channeling sympathetic axons into the sympathetic chains and controlling the temporal sequence of sympathetic target innervation (By similarity). [UniProt]
Calculated Mw	114 kDa
Cellular Localization	Cell membrane; Single-pass type I membrane protein. [UniProt]

## Images



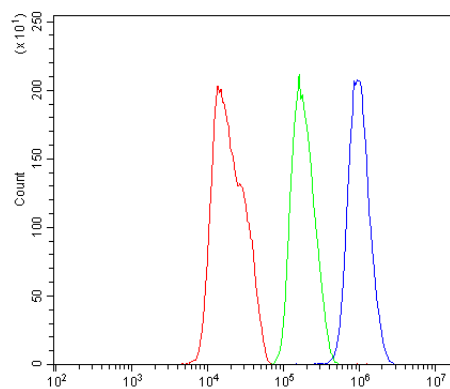
ARG43102 anti-Semaphorin 6A antibody IHC-P image

Immunohistochemistry: Paraffin-embedded Human rectal cancer tissue. Antigen Retrieval: Heat mediation was performed in EDTA buffer (pH 8.0). The tissue section was blocked with 10% goat serum. The tissue section was then stained with ARG43102 anti-Semaphorin 6A antibody at 1 µg/ml dilution, overnight at 4°C.



ARG43102 anti-Semaphorin 6A antibody WB image

Western blot: 50 µg of sample under reducing conditions. HEK293, HeLa, Raji, U2OS, Jurkat, Caco-2, Rat brain, PC-12, Mouse brain and Raw264.7 whole cell lysates stained with ARG43102 anti-Semaphorin 6A antibody at 0.25 µg/ml dilution, overnight at 4°C.



#### ARG43102 anti-Semaphorin 6A antibody FACS image

Flow Cytometry: HepG2 cells were blocked with 10% normal goat serum and then stained with ARG43102 anti-Semaphorin 6A antibody (blue) at  $1 \mu\text{g}/10^6$  cells for 30 min at  $20^\circ\text{C}$ , followed by incubation with DyLight<sup>®</sup>488 labelled secondary antibody. Isotype control antibody (green) was rabbit IgG ( $1 \mu\text{g}/10^6$  cells) used under the same conditions. Unlabelled sample (red) was also used as a control.