

## ARG43063 anti-SETD1A / SET1A antibody

Package: 50 µg  
Store at: -20°C

### Summary

Product Description	Rabbit Polyclonal antibody recognizes SETD1A / SET1A
Tested Reactivity	Hu, Ms, Rat
Tested Application	IHC-P, WB
Host	Rabbit
Clonality	Polyclonal
Isotype	IgG
Target Name	SETD1A / SET1A
Species	Human
Immunogen	Recombinant protein corresponding to D8-K153 of Human SETD1A / SET1A.
Conjugation	Un-conjugated
Alternate Names	KMT2F; Set1/Ash2 histone methyltransferase complex subunit SET1; Histone-lysine N-methyltransferase SETD1A; hSET1A; Lysine N-methyltransferase 2F; EC 2.1.1.43; Set1; Set1A; SET domain-containing protein 1A

### Application Instructions

Application table	Application	Dilution
	IHC-P	1:200 - 1:1000
	WB	1:500 - 1:2000
Application Note	IHC-P: Antigen Retrieval: Heat mediation was performed in EDTA buffer (pH 8.0). * The dilutions indicate recommended starting dilutions and the optimal dilutions or concentrations should be determined by the scientist.	

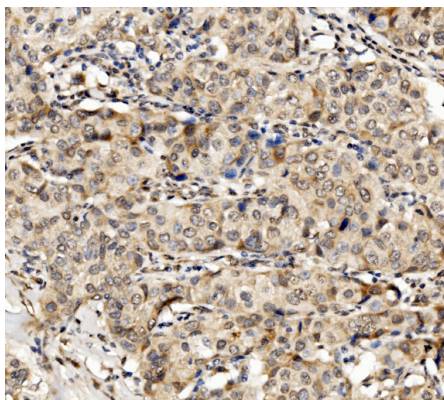
### Properties

Form	Liquid
Purification	Affinity purification with immunogen.
Buffer	0.2% Na <sub>2</sub> HPO <sub>4</sub> , 0.9% NaCl, 0.05% Sodium azide and 4% Trehalose.
Preservative	0.05% Sodium azide
Stabilizer	4% Trehalose
Concentration	0.5 mg/ml
Storage instruction	For continuous use, store undiluted antibody at 2-8°C for up to a week. For long-term storage, aliquot and store at -20°C or below. Storage in frost free freezers is not recommended. Avoid repeated freeze/thaw cycles. Suggest spin the vial prior to opening. The antibody solution should be gently mixed before use.

## Bioinformation

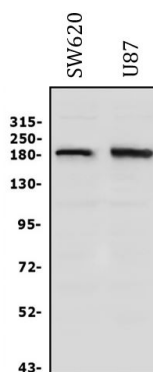
Gene Symbol	SETD1A
Gene Full Name	SET domain containing 1A
Background	The protein encoded by this gene is a component of a histone methyltransferase (HMT) complex that produces mono-, di-, and trimethylated histone H3 at Lys4. Trimethylation of histone H3 at lysine 4 (H3K4me3) is a chromatin modification known to generally mark the transcription start sites of active genes. The protein contains SET domains, a RNA recognition motif domain and is a member of the class V-like SAM-binding methyltransferase superfamily. [provided by RefSeq, Dec 2016]
Function	Histone methyltransferase that specifically methylates 'Lys-4' of histone H3, when part of the SET1 histone methyltransferase (HMT) complex, but not if the neighboring 'Lys-9' residue is already methylated. H3 'Lys-4' methylation represents a specific tag for epigenetic transcriptional activation. The non-overlapping localization with SETD1B suggests that SETD1A and SETD1B make non-redundant contributions to the epigenetic control of chromatin structure and gene expression. [UniProt]
Calculated Mw	186 kDa
Cellular Localization	Nucleus speckle. Chromosome. Note=Localizes to a largely non-overlapping set of euchromatic nuclear speckles with SETD1B, suggesting that SETD1A and SETD1B each bind to a unique set of target genes. [UniProt]

## Images



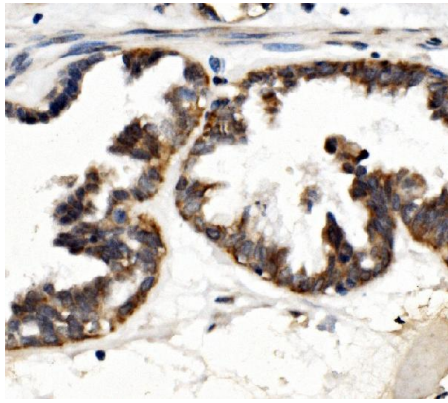
ARG43063 anti-SETD1A / SET1A antibody IHC-P image

Immunohistochemistry: Paraffin-embedded Human mammary cancer tissue. Antigen Retrieval: Heat mediation was performed in EDTA buffer (pH 8.0). The tissue section was blocked with 10% goat serum. The tissue section was then stained with ARG43063 anti-SETD1A / SET1A antibody at 1 µg/ml dilution, overnight at 4°C.



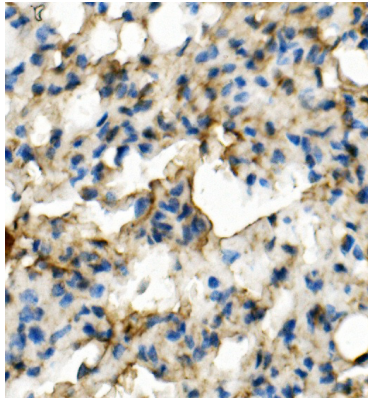
ARG43063 anti-SETD1A / SET1A antibody WB image

Western blot: 50 µg of SW620 and U87 whole cell lysates stained with ARG43063 anti-SETD1A / SET1A antibody at 0.5 µg/ml dilution, overnight at 4°C.



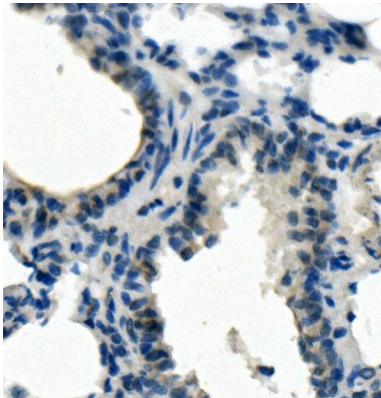
ARG43063 anti-SETD1A / SET1A antibody IHC-P image

Immunohistochemistry: Paraffin-embedded Human ovarian cancer tissue. Antigen Retrieval: Heat mediation was performed in EDTA buffer (pH 8.0). The tissue section was blocked with 10% goat serum. The tissue section was then stained with ARG43063 anti-SETD1A / SET1A antibody at 1 µg/ml dilution, overnight at 4°C.



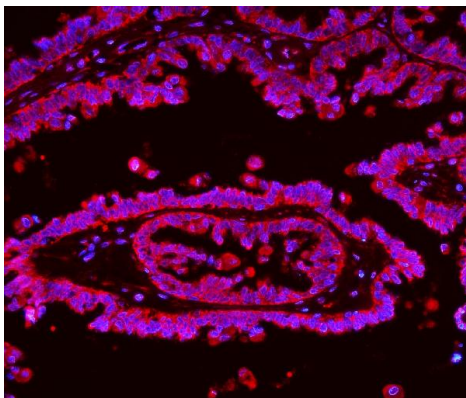
ARG43063 anti-SETD1A / SET1A antibody IHC-P image

Immunohistochemistry: Paraffin-embedded Mouse lung tissue. Antigen Retrieval: Heat mediation was performed in EDTA buffer (pH 8.0). The tissue section was blocked with 10% goat serum. The tissue section was then stained with ARG43063 anti-SETD1A / SET1A antibody at 1 µg/ml dilution, overnight at 4°C.



ARG43063 anti-SETD1A / SET1A antibody IHC-P image

Immunohistochemistry: Paraffin-embedded Rat lung tissue. Antigen Retrieval: Heat mediation was performed in EDTA buffer (pH 8.0). The tissue section was blocked with 10% goat serum. The tissue section was then stained with ARG43063 anti-SETD1A / SET1A antibody at 1 µg/ml dilution, overnight at 4°C.



ARG43063 anti-SETD1A / SET1A antibody IHC-P image

Immunohistochemistry: Paraffin-embedded Human ovarian cancer tissue. Antigen Retrieval: Heat mediation was performed in EDTA buffer (pH 8.0). The tissue section was blocked with 10% goat serum. The tissue section was then stained with ARG43063 anti-SETD1A / SET1A antibody at 2 µg/ml dilution, overnight at 4°C. The section was counterstained with DAPI (blue).