

ARG42980 anti-GPRC5B antibody

Package: 100 µl
Store at: -20°C

Summary

Product Description	Rabbit Polyclonal antibody recognizes GPRC5B
Tested Reactivity	Hu, Ms, Rat
Tested Application	IP, WB
Host	Rabbit
Clonality	Polyclonal
Isotype	IgG
Target Name	GPRC5B
Species	Human
Immunogen	Synthetic peptide of Human GPRC5B.
Conjugation	Un-conjugated
Alternate Names	RAIG-2; G-protein coupled receptor family C group 5 member B; Retinoic acid-induced gene 2 protein; RAIG2; A-69G12.1

Application Instructions

Application table	Application	Dilution
	IP	1:20
	WB	1:2000 - 1:10000
Application Note	* The dilutions indicate recommended starting dilutions and the optimal dilutions or concentrations should be determined by the scientist.	
Positive Control	NIH/3T3	
Observed Size	~ 45 kDa	

Properties

Form	Liquid
Purification	Affinity purified.
Buffer	50 mM Tris-Glycine (pH 7.4), 150 mM NaCl, 0.01% Sodium azide, 40% Glycerol and 0.05% BSA.
Preservative	0.01% Sodium azide
Stabilizer	40% Glycerol and 0.05% BSA
Concentration	Batch dependent
Storage instruction	For continuous use, store undiluted antibody at 2-8°C for up to a week. For long-term storage, aliquot and store at -20°C. Storage in frost free freezers is not recommended. Avoid repeated freeze/thaw cycles. Suggest spin the vial prior to opening. The antibody solution should be gently mixed before use.

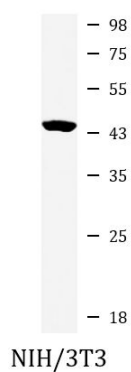
Note

For laboratory research only, not for drug, diagnostic or other use.

Bioinformation

Gene Symbol	GPRC5B
Gene Full Name	G protein-coupled receptor, class C, group 5, member B
Background	This gene encodes a member of the type 3 G protein-coupled receptor family. Members of this superfamily are characterized by a signature 7-transmembrane domain motif. The encoded protein may modulate insulin secretion and increased protein expression is associated with type 2 diabetes. Alternative splicing results in multiple transcript variants. [provided by RefSeq, Feb 2015]
Function	Unknown. This retinoic acid-inducible G-protein coupled receptor provide evidence for a possible interaction between retinoid and G-protein signaling pathways. [UniProt]
Calculated Mw	45 kDa
Cellular Localization	Cell membrane; Multi-pass membrane protein. Cytoplasmic vesicle membrane; Multi-pass membrane protein. Note=Localized in the plasma membrane and perinuclear vesicles. [UniProt]

Images



ARG42980 anti-GPRC5B antibody WB image

Western blot: NIH/3T3 cell lysate stained with ARG42980 anti-GPRC5B antibody at 1:1000 dilution.