

ARG42952 anti-SDHC antibody

Package: 50 µg
Store at: -20°C

Summary

Product Description	Rabbit Polyclonal antibody recognizes SDHC
Tested Reactivity	Hu, Ms, Rat
Tested Application	IHC-P, WB
Host	Rabbit
Clonality	Polyclonal
Isotype	IgG
Target Name	SDHC
Species	Human
Immunogen	Synthetic peptide corresponding to aa. 35-50 of Human SDHC. (KEEMERFWNKNIGSNR)
Conjugation	Un-conjugated
Alternate Names	Succinate dehydrogenase cytochrome b560 subunit, mitochondrial; QPs1; Integral membrane protein CII-3; SDH3; CYB560; PGL3; Succinate dehydrogenase complex subunit C; Succinate-ubiquinone oxidoreductase cytochrome B large subunit; QPS1; QPs-1; CYBL

Application Instructions

Application table	Application	Dilution
	IHC-P	1:200 - 1:1000
	WB	1:500 - 1:2000
Application Note	* The dilutions indicate recommended starting dilutions and the optimal dilutions or concentrations should be determined by the scientist.	
Observed Size	~ 19 kDa	

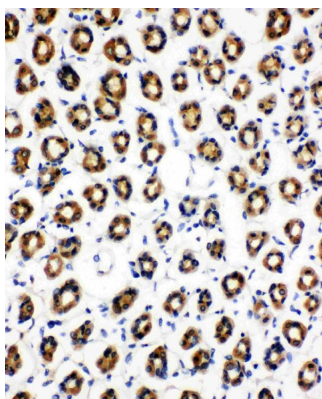
Properties

Form	Liquid
Purification	Affinity purification with immunogen.
Buffer	0.2% Na ₂ HPO ₄ , 0.9% NaCl, 0.05% Thimerosal, 0.05% Sodium azide and 5% BSA.
Preservative	0.05% Thimerosal and 0.05% Sodium azide
Stabilizer	5% BSA
Concentration	0.5 mg/ml
Storage instruction	For continuous use, store undiluted antibody at 2-8°C for up to a week. For long-term storage, aliquot and store at -20°C or below. Storage in frost free freezers is not recommended. Avoid repeated freeze/thaw cycles. Suggest spin the vial prior to opening. The antibody solution should be gently mixed before use.

Bioinformation

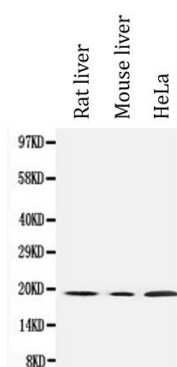
Gene Symbol	SDHC
Gene Full Name	succinate dehydrogenase complex, subunit C, integral membrane protein, 15kDa
Background	This gene encodes one of four nuclear-encoded subunits that comprise succinate dehydrogenase, also known as mitochondrial complex II, a key enzyme complex of the tricarboxylic acid cycle and aerobic respiratory chains of mitochondria. The encoded protein is one of two integral membrane proteins that anchor other subunits of the complex, which form the catalytic core, to the inner mitochondrial membrane. There are several related pseudogenes for this gene on different chromosomes. Mutations in this gene have been associated with paragangliomas. Alternatively spliced transcript variants have been described. [provided by RefSeq, May 2013]
Function	Membrane-anchoring subunit of succinate dehydrogenase (SDH) that is involved in complex II of the mitochondrial electron transport chain and is responsible for transferring electrons from succinate to ubiquinone (coenzyme Q). [UniProt]
Calculated Mw	19 kDa
Cellular Localization	Mitochondrion inner membrane; Multi-pass membrane protein. [UniProt]

Images



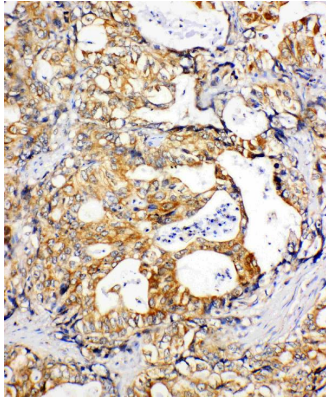
ARG42952 anti-SDHC antibody IHC-P image

Immunohistochemistry: Paraffin-embedded Rat gaster tissue stained with ARG42952 anti-SDHC antibody.



ARG42952 anti-SDHC antibody WB image

Western blot: 50 µg of Rat liver, 50 µg of Mouse liver and 40 µg of HeLa whole cell lysates stained with ARG42952 anti-SDHC antibody at 0.5 µg/ml dilution.



ARG42952 anti-SDHC antibody IHC-P image

Immunohistochemistry: Paraffin-embedded Human gastric cancer tissue stained with ARG42952 anti-SDHC antibody.