

ARG42856 anti-ARFRP1 antibody

Package: 100 µl
Store at: -20°C

Summary

Product Description	Rabbit Polyclonal antibody recognizes ARFRP1
Tested Reactivity	Hu
Tested Application	IHC-P, WB
Host	Rabbit
Clonality	Polyclonal
Isotype	IgG
Target Name	ARFRP1
Species	Human
Immunogen	Synthetic peptide of Human ARFRP1.
Conjugation	Un-conjugated
Alternate Names	ARP; ARL18; ADP-ribosylation factor-related protein 1; Arp1; ARF-related protein 1

Application Instructions

Application table	Application	Dilution
	IHC-P	1:25 - 1:100
	WB	1:500 - 1:2000
Application Note	* The dilutions indicate recommended starting dilutions and the optimal dilutions or concentrations should be determined by the scientist.	
Positive Control	WB: 293T, Human fetal liver, Human cervical cancer and Human fetal muscle IHC-P: Human breast cancer and Human cervical cancer	
Observed Size	~ 25 kDa	

Properties

Form	Liquid
Purification	Affinity purification with immunogen.
Buffer	PBS (pH 7.4), 0.05% Sodium azide and 40% Glycerol.
Preservative	0.05% Sodium azide
Stabilizer	40% Glycerol
Concentration	0.9 mg/ml
Storage instruction	For continuous use, store undiluted antibody at 2-8°C for up to a week. For long-term storage, aliquot and store at -20°C. Storage in frost free freezers is not recommended. Avoid repeated freeze/thaw cycles. Suggest spin the vial prior to opening. The antibody solution should be gently mixed before use.

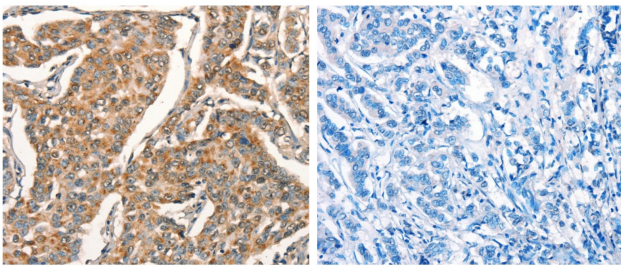
Note

For laboratory research only, not for drug, diagnostic or other use.

Bioinformation

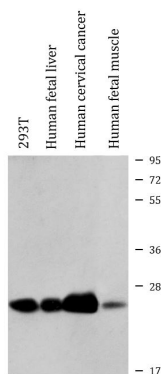
Gene Symbol	ARFRP1
Gene Full Name	ADP-ribosylation factor related protein 1
Background	The protein encoded by this gene is a membrane-associated GTP-ase which localizes to the plasma membrane and is related to the ADP-ribosylation factor (ARF) and ARF-like (ARL) proteins. This gene plays a role in membrane trafficking between the trans-Golgi network and endosomes. Alternatively spliced transcript variants encoding different isoforms have been identified. [provided by RefSeq, May 2012]
Function	Trans-Golgi-associated GTPase that regulates protein sorting. Controls the targeting of ARL1 and its effector to the trans-Golgi. Required for the lipidation of chylomicrons in the intestine and required for VLDL lipidation in the liver. [UniProt]
Calculated Mw	23 kDa
Cellular Localization	Golgi apparatus. Golgi apparatus, trans-Golgi network. Note=Located in the trans-Golgi in the GTP-bound active state. [UniProt]

Images



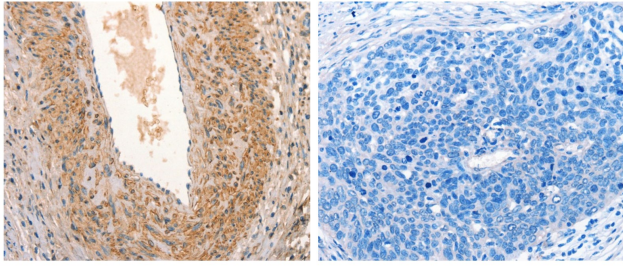
ARG42856 anti-ARFRP1 antibody IHC-P image

Immunohistochemistry: Paraffin-embedded Human breast cancer tissue stained with ARG42856 anti-ARFRP1 antibody (left) at 1:25 dilution, or the same antibody pre-incubated with synthetic peptide (right). (Original magnification: X200).



ARG42856 anti-ARFRP1 antibody WB image

Western blot: 40 µg of 293T, Human fetal liver, Human cervical cancer and Human fetal muscle lysates stained with ARG42856 anti-ARFRP1 antibody at 1:800 dilution.



ARG42856 anti-ARFRP1 antibody IHC-P image

Immunohistochemistry: Paraffin-embedded Human cervical cancer tissue stained with ARG42856 anti-ARFRP1 antibody (left) at 1:25 dilution, or the same antibody pre-incubated with synthetic peptide (right). (Original magnification: X200).