

## ARG42840 anti-GRB10 antibody

Package: 50 µg  
Store at: -20°C

### Summary

Product Description	Rabbit Polyclonal antibody recognizes GRB10
Tested Reactivity	Hu, Ms, Rat
Tested Application	FACS, IHC-P, WB
Host	Rabbit
Clonality	Polyclonal
Isotype	IgG
Target Name	GRB10
Species	Human
Immunogen	Recombinant protein corresponding to M1-K251 of Human GRB10.
Conjugation	Un-conjugated
Alternate Names	GRB10 adapter protein; GRB-IR; Insulin receptor-binding protein Grb-IR; Grb-10; MEG1; RSS; Growth factor receptor-bound protein 10; IRBP

### Application Instructions

Application table	Application	Dilution
	FACS	1:150 - 1:500
	IHC-P	1:200 - 1:1000
	WB	1:500 - 1:2000
Application Note	IHC-P: Antigen Retrieval: Heat mediation was performed in EDTA buffer (pH 8.0). * The dilutions indicate recommended starting dilutions and the optimal dilutions or concentrations should be determined by the scientist.	
Observed Size	~ 75 kDa	

### Properties

Form	Liquid
Purification	Affinity purification with immunogen.
Buffer	0.2% Na2HPO4, 0.9% NaCl, 0.01% Sodium azide and 4% Trehalose.
Preservative	0.01% Sodium azide
Stabilizer	4% Trehalose
Concentration	0.5 mg/ml
Storage instruction	For continuous use, store undiluted antibody at 2-8°C for up to a week. For long-term storage, aliquot and store at -20°C or below. Storage in frost free freezers is not recommended. Avoid repeated freeze/thaw cycles. Suggest spin the vial prior to opening. The antibody solution should be gently mixed

before use.

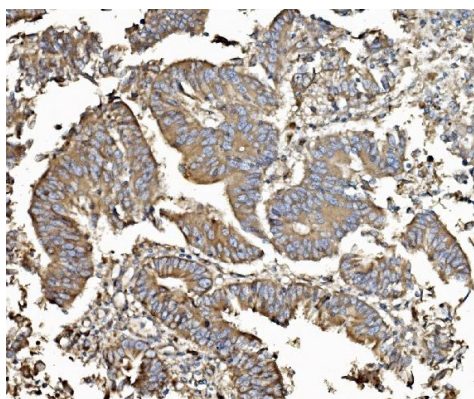
Note

For laboratory research only, not for drug, diagnostic or other use.

## Bioinformation

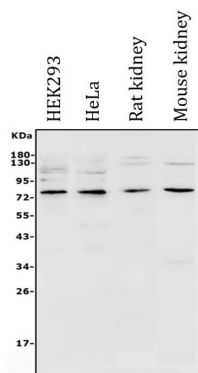
Gene Symbol	GRB10
Gene Full Name	growth factor receptor-bound protein 10
Background	The product of this gene belongs to a small family of adapter proteins that are known to interact with a number of receptor tyrosine kinases and signaling molecules. This gene encodes a growth factor receptor-binding protein that interacts with insulin receptors and insulin-like growth-factor receptors. Overexpression of some isoforms of the encoded protein inhibits tyrosine kinase activity and results in growth suppression. This gene is imprinted in a highly isoform- and tissue-specific manner, with expression observed from the paternal allele in the brain, and from the maternal allele in the placental trophoblasts. Alternatively spliced transcript variants encoding different isoforms have been identified. [provided by RefSeq, Oct 2010]
Function	Adapter protein which modulates coupling of a number of cell surface receptor kinases with specific signaling pathways. Binds to, and suppress signals from, activated receptors tyrosine kinases, including the insulin (INSR) and insulin-like growth factor (IGF1R) receptors. The inhibitory effect can be achieved by 2 mechanisms: interference with the signaling pathway and increased receptor degradation. Delays and reduces AKT1 phosphorylation in response to insulin stimulation. Blocks association between INSR and IRS1 and IRS2 and prevents insulin-stimulated IRS1 and IRS2 tyrosine phosphorylation. Recruits NEDD4 to IGF1R, leading to IGF1R ubiquitination, increased internalization and degradation by both the proteasomal and lysosomal pathways. May play a role in mediating insulin-stimulated ubiquitination of INSR, leading to proteasomal degradation. Negatively regulates Wnt signaling by interacting with LRP6 intracellular portion and interfering with the binding of AXIN1 to LRP6. Positive regulator of the KDR/VEGFR-2 signaling pathway. May inhibit NEDD4-mediated degradation of KDR/VEGFR-2. [UniProt]
Calculated Mw	67 kDa
PTM	Phosphorylated on serine residues upon EGF, FGF and PDGF stimulation (By similarity). Phosphorylated at Tyr-67 by TEC. [UniProt]
Cellular Localization	Cytoplasm. Note=When complexed with NEDD4 and IGF1R, follows IGF1R internalization, remaining associated with early endosomes. Uncouples from IGF1R-containing endosomes before the sorting of the receptor to the lysosomal compartment (By similarity). [UniProt]

## Images



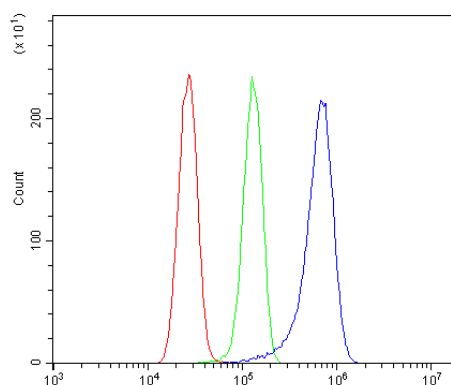
ARG42840 anti-GRB10 antibody IHC-P image

Immunohistochemistry: Paraffin-embedded Human rectal cancer tissue. Antigen Retrieval: Heat mediation was performed in EDTA buffer (pH 8.0). The tissue section was blocked with 10% goat serum. The tissue section was then stained with ARG42840 anti-GRB10 antibody at 2 µg/ml dilution, overnight at 4°C.



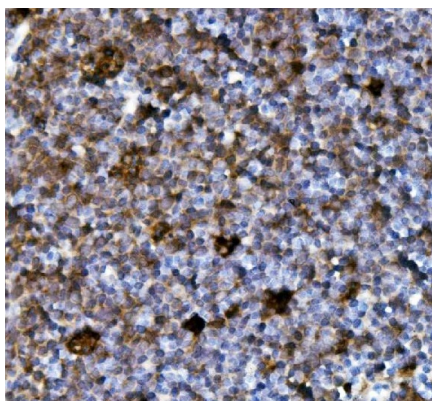
#### ARG42840 anti-GRB10 antibody WB image

Western blot: 50 µg of sample under reducing conditions. HEK293, HeLa, Rat kidney and Mouse kidney lysates stained with ARG42840 anti-GRB10 antibody at 0.5 µg/ml dilution, overnight at 4°C.



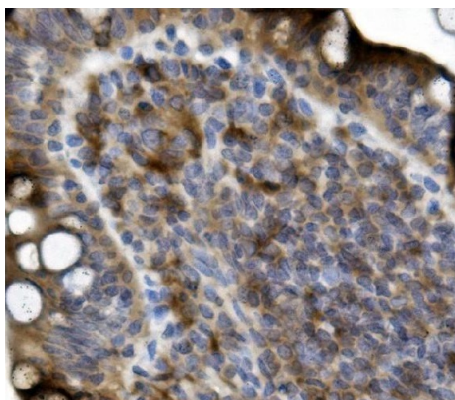
#### ARG42840 anti-GRB10 antibody FACS image

Flow Cytometry: U-87 MG cells were blocked with 10% normal goat serum and then stained with ARG42840 anti-GRB10 antibody (blue) at 1 µg/10<sup>6</sup> cells for 30 min at 20°C, followed by incubation with DyLight®488 labelled secondary antibody. Isotype control antibody (green) was Rabbit IgG (1 µg/10<sup>6</sup> cells) used under the same conditions. Unlabelled sample (red) was also used as a control.



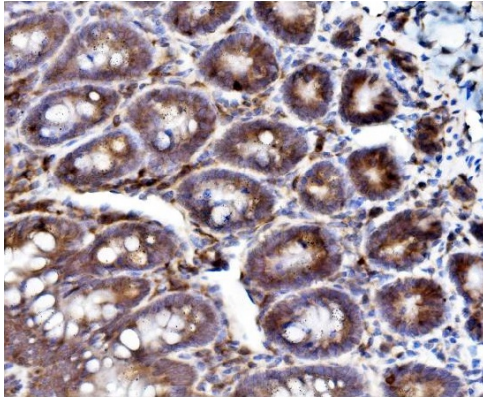
#### ARG42840 anti-GRB10 antibody IHC-P image

Immunohistochemistry: Paraffin-embedded Mouse intestine tissue. Antigen Retrieval: Heat mediation was performed in EDTA buffer (pH 8.0). The tissue section was blocked with 10% goat serum. The tissue section was then stained with ARG42840 anti-GRB10 antibody at 2 µg/ml dilution, overnight at 4°C.



#### ARG42840 anti-GRB10 antibody IHC-P image

Immunohistochemistry: Paraffin-embedded Rat intestine tissue. Antigen Retrieval: Heat mediation was performed in EDTA buffer (pH 8.0). The tissue section was blocked with 10% goat serum. The tissue section was then stained with ARG42840 anti-GRB10 antibody at 2 µg/ml dilution, overnight at 4°C.



#### ARG42840 anti-GRB10 antibody IHC-P image

Immunohistochemistry: Paraffin-embedded Rat intestine tissue.  
Antigen Retrieval: Heat mediation was performed in EDTA buffer (pH 8.0). The tissue section was blocked with 10% goat serum. The tissue section was then stained with ARG42840 anti-GRB10 antibody at 2  $\mu\text{g}/\text{ml}$  dilution, overnight at 4°C.