

ARG42801 anti-P70 S6 Kinase beta antibody

Package: 100 µl
Store at: -20°C

Summary

Product Description	Rabbit Polyclonal antibody recognizes P70 S6 Kinase beta
Tested Reactivity	Hu, Ms, Rat
Tested Application	FACS, ICC/IF, IHC-P, WB
Host	Rabbit
Clonality	Polyclonal
Isotype	IgG
Target Name	P70 S6 Kinase beta
Species	Human
Immunogen	Recombinant protein of Human P70 S6 Kinase beta.
Conjugation	Un-conjugated
Alternate Names	S6K-beta2; p70 ribosomal S6 kinase beta; Ribosomal protein S6 kinase beta-2; S6 kinase-related kinase; S6K-beta-2; p70-beta; p70 S6K-beta; p70 S6 kinase beta; p70S6Kb; STK14B; p70 S6KB; p70-S6K 2; P70-beta-1; P70-beta-2; S6K2; SRK; P70S6K2; KLS; Serine/threonine-protein kinase 14B; S6K-beta; P70-beta; p70(S6K)-beta; 70 kDa ribosomal protein S6 kinase 2; EC 2.7.11.1

Application Instructions

Application table	Application	Dilution
	FACS	1:20
	ICC/IF	1:50
	IHC-P	1:20
	WB	1:2000 - 1:10000
Application Note	* The dilutions indicate recommended starting dilutions and the optimal dilutions or concentrations should be determined by the scientist.	
Positive Control	HeLa	
Observed Size	~ 57 kDa	

Properties

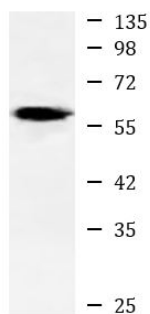
Form	Liquid
Purification	Affinity purified.
Buffer	50 mM Tris-Glycine (pH 7.4), 150 mM NaCl, 0.01% Sodium azide, 40% Glycerol and 0.05% BSA.
Preservative	0.01% Sodium azide
Stabilizer	40% Glycerol and 0.05% BSA

Concentration	Batch dependent
Storage instruction	For continuous use, store undiluted antibody at 2-8°C for up to a week. For long-term storage, aliquot and store at -20°C. Storage in frost free freezers is not recommended. Avoid repeated freeze/thaw cycles. Suggest spin the vial prior to opening. The antibody solution should be gently mixed before use.
Note	For laboratory research only, not for drug, diagnostic or other use.

Bioinformation

Gene Symbol	RPS6KB2
Gene Full Name	ribosomal protein S6 kinase, 70kDa, polypeptide 2
Background	This gene encodes a member of the RSK (ribosomal S6 kinase) family of serine/threonine kinases. This kinase contains a kinase catalytic domain and phosphorylates the S6 ribosomal protein and eukaryotic translation initiation factor 4B (eIF4B). Phosphorylation of S6 leads to an increase in protein synthesis and cell proliferation. [provided by RefSeq, Jan 2015]
Function	Phosphorylates specifically ribosomal protein S6 (PubMed:29750193). Seems to act downstream of mTOR signaling in response to growth factors and nutrients to promote cell proliferation, cell growth and cell cycle progression in an alternative pathway regulated by MEAK7 (PubMed:29750193). [UniProt]
Calculated Mw	53 kDa
PTM	Phosphorylated and activated by MTOR. Phosphorylation by PKC within the NLS in response to mitogenic stimuli causes cytoplasmic retention. [UniProt]
Cellular Localization	Cytoplasm. Nucleus. [UniProt]

Images



HeLa

ARG42801 anti-P70 S6 Kinase beta antibody WB image

Western blot: HeLa cell lysate stained with ARG42801 anti-P70 S6 Kinase beta antibody at 1:1000 dilution.