

ARG42745 anti-CTHRC1 antibody

Package: 50 µg
Store at: -20°C

Summary

Product Description	Rabbit Polyclonal antibody recognizes CTHRC1
Tested Reactivity	Hu, Ms, Rat
Tested Application	FACS, ICC/IF, IHC-P, WB
Host	Rabbit
Clonality	Polyclonal
Isotype	IgG
Target Name	CTHRC1
Species	Human
Immunogen	Recombinant protein corresponding to S31-K243 of Human CTHRC1.
Conjugation	Un-conjugated
Alternate Names	Protein NMTC1; Collagen triple helix repeat-containing protein 1

Application Instructions

Application table	Application	Dilution
	FACS	1:150 - 1:500
	ICC/IF	1:200 - 1:1000
	IHC-P	1:200 - 1:1000
	WB	1:500 - 1:2000
Application Note	IHC-P: Antigen Retrieval: Heat mediation was performed in EDTA buffer (pH 8.0). * The dilutions indicate recommended starting dilutions and the optimal dilutions or concentrations should be determined by the scientist.	
Observed Size	~ 26 kDa	

Properties

Form	Liquid
Purification	Affinity purification with immunogen.
Buffer	0.2% Na ₂ HPO ₄ , 0.9% NaCl, 0.01% Sodium azide and 4% Trehalose.
Preservative	0.01% Sodium azide
Stabilizer	4% Trehalose
Concentration	0.5 mg/ml
Storage instruction	For continuous use, store undiluted antibody at 2-8°C for up to a week. For long-term storage, aliquot and store at -20°C or below. Storage in frost free freezers is not recommended. Avoid repeated

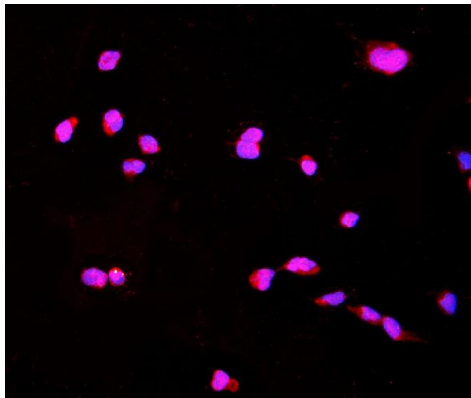
freeze/thaw cycles. Suggest spin the vial prior to opening. The antibody solution should be gently mixed before use.

Note For laboratory research only, not for drug, diagnostic or other use.

Bioinformation

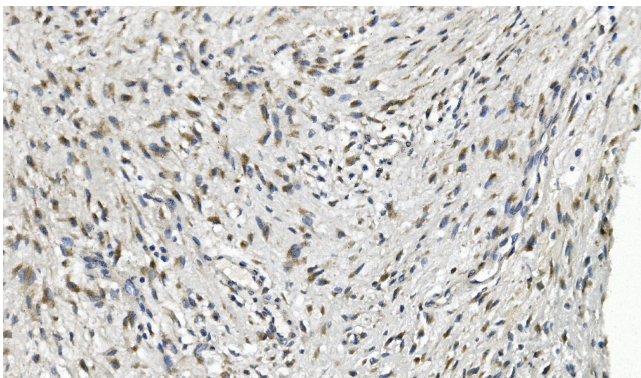
Gene Symbol	CTHRC1
Gene Full Name	collagen triple helix repeat containing 1
Background	This locus encodes a protein that may play a role in the cellular response to arterial injury through involvement in vascular remodeling. Mutations at this locus have been associated with Barrett esophagus and esophageal adenocarcinoma. Alternatively spliced transcript variants have been described. [provided by RefSeq, Jan 2012]
Function	May act as a negative regulator of collagen matrix deposition. [UniProt]
Calculated Mw	26 kDa
PTM	N-glycosylated. [UniProt]
Cellular Localization	Secreted, extracellular space, extracellular matrix. [UniProt]

Images



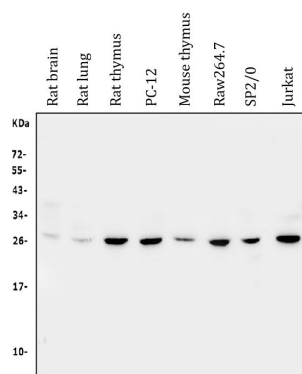
ARG42745 anti-CTHRC1 antibody ICC/IF image

Immunofluorescence: Hepa 1-6 cells stained with ARG42745 anti-CTHRC1 antibody (red) at 4 µg/ml dilution, overnight at 4°C. DAPI (blue) for nuclear staining.



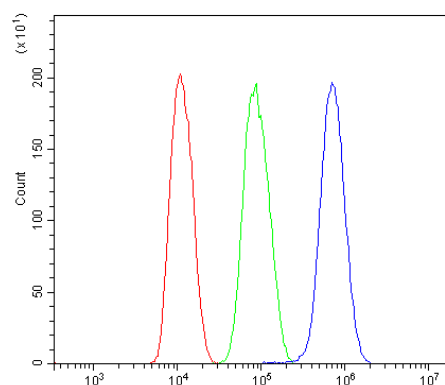
ARG42745 anti-CTHRC1 antibody IHC-P image

Immunohistochemistry: Paraffin-embedded Human mammary cancer tissue. Antigen Retrieval: Heat mediation was performed in EDTA buffer (pH 8.0). The tissue section was blocked with 10% goat serum. The tissue section was then stained with ARG42745 anti-CTHRC1 antibody at 1 µg/ml dilution, overnight at 4°C.



ARG42745 anti-CTHRC1 antibody WB image

Western blot: 50 µg of sample under reducing conditions. Rat brain, Rat lung, Rat thymus, PC-12, Mouse thymus, Raw264.7, SP2/0 and Jurkat whole cell lysates stained with ARG42745 anti-CTHRC1 antibody at 0.5 µg/ml dilution, overnight at 4°C.



ARG42745 anti-CTHRC1 antibody FACS image

Flow Cytometry: HepG2 cells were blocked with 10% normal goat serum and then stained with ARG42745 anti-CTHRC1 antibody (blue) at 1 µg/10⁶ cells for 30 min at 20°C, followed by incubation with DyLight[®]488 labelled secondary antibody. Isotype control antibody (green) was Rabbit IgG (1 µg/10⁶ cells) used under the same conditions. Unlabelled sample (red) was also used as a control.