

ARG42638 anti-GSDMC antibody

Package: 100 µl
Store at: -20°C

Summary

Product Description	Rabbit Polyclonal antibody recognizes GSDMC
Tested Reactivity	Hu, Ms
Tested Application	ICC/IF, WB
Host	Rabbit
Clonality	Polyclonal
Isotype	IgG
Target Name	GSDMC
Species	Human
Immunogen	Recombinant fusion protein corresponding to aa. 1-100 of Human GSDMC (NP_113603.1).
Conjugation	Un-conjugated
Alternate Names	MLZE; Melanoma-derived leucine zipper-containing extranuclear factor; Gasdermin-C

Application Instructions

Application table	Application	Dilution
	ICC/IF	1:50 - 1:200
	WB	1:500 - 1:2000
Application Note	* The dilutions indicate recommended starting dilutions and the optimal dilutions or concentrations should be determined by the scientist.	
Positive Control	HeLa	
Observed Size	~ 58 kDa	

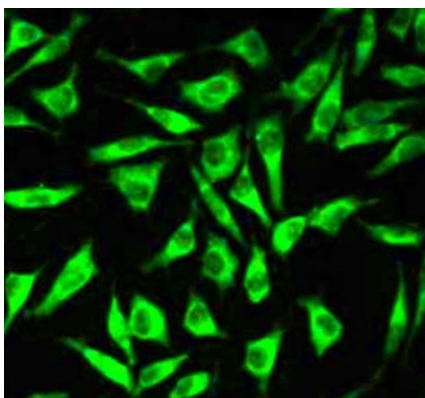
Properties

Form	Liquid
Purification	Affinity purified.
Buffer	PBS (pH 7.3), 0.02% Sodium azide and 50% Glycerol.
Preservative	0.02% Sodium azide
Stabilizer	50% Glycerol
Storage instruction	For continuous use, store undiluted antibody at 2-8°C for up to a week. For long-term storage, aliquot and store at -20°C. Storage in frost free freezers is not recommended. Avoid repeated freeze/thaw cycles. Suggest spin the vial prior to opening. The antibody solution should be gently mixed before use.
Note	For laboratory research only, not for drug, diagnostic or other use.

Bioinformation

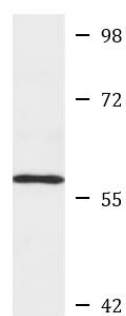
Gene Symbol	GSDMC
Gene Full Name	gasdermin C
Function	The N-terminal moiety promotes pyroptosis. May be acting by homooligomerizing within the membrane and forming pores (PubMed:27281216). The physiological relevance of this observation is unknown (Probable). [UniProt]
Highlight	Related news: Solutions for studying PANoptosis & PANoptosome
Calculated Mw	58 kDa

Images



ARG42638 anti-GSDMC antibody ICC/IF image

Immunofluorescence: L929 cells stained with ARG42638 anti-GSDMC antibody at 1:100 dilution. DAPI (blue) for nuclear staining.



HeLa

ARG42638 anti-GSDMC antibody WB image

Western blot: 25 µg of HeLa cell lysate stained with ARG42638 anti-GSDMC antibody at 1:3000 dilution.