

ARG42599 anti-CutA antibody

Package: 50 µl
Store at: -20°C

Summary

Product Description	Rabbit Polyclonal antibody recognizes CutA
Tested Reactivity	Hu
Predict Reactivity	Ms, Rat, Cow, Dog, Gpig, Hrs, Rb
Tested Application	IHC-P, WB
Host	Rabbit
Clonality	Polyclonal
Isotype	IgG
Target Name	CutA
Species	Human
Immunogen	Synthetic peptide around the center region of Human CutA. (within the following region: AFVTCPNKEVAKIARAVVEKRLAACVNLIPIQITSYEWKGKIEEDSEVL)
Conjugation	Un-conjugated
Alternate Names	Acetylcholinesterase-associated protein; Brain acetylcholinesterase putative membrane anchor; Protein CutA; ACHAP; C6orf82

Application Instructions

Predict Reactivity Note	Predicted Homology Based on Immunogen Sequence: Cow: 100%; Dog: 100%; Guinea pig: 100%; Horse: 100%; Mouse: 100%; Rabbit: 100%; Rat: 100%						
Application table	<table> <tr> <th>Application</th><th>Dilution</th></tr> <tr> <td>IHC-P</td><td>10 µg/ml</td></tr> <tr> <td>WB</td><td>0.2 - 1 µg/ml</td></tr> </table>	Application	Dilution	IHC-P	10 µg/ml	WB	0.2 - 1 µg/ml
Application	Dilution						
IHC-P	10 µg/ml						
WB	0.2 - 1 µg/ml						
Application Note	IHC-P: Antigen Retrieval: Heat mediation. * The dilutions indicate recommended starting dilutions and the optimal dilutions or concentrations should be determined by the scientist.						
Positive Control	THP-1						
Observed Size	~ 20 kDa						

Properties

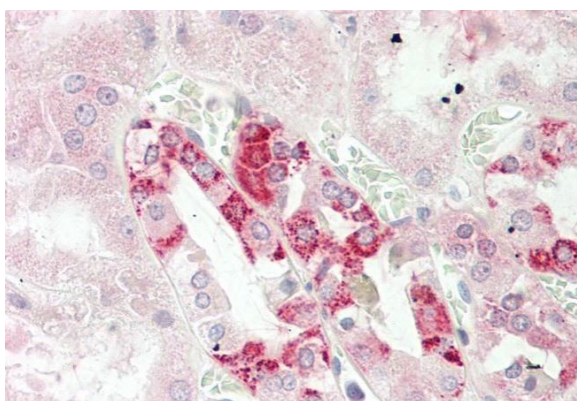
Form	Liquid
Purification	Affinity purified.
Buffer	PBS, 0.09% (w/v) Sodium azide and 2% Sucrose.
Preservative	0.09% (w/v) Sodium azide

Stabilizer	2% Sucrose
Concentration	Batch dependent: 0.5 - 1 mg/ml
Storage instruction	For continuous use, store undiluted antibody at 2-8°C for up to a week. For long-term storage, aliquot and store at -20°C or below. Storage in frost free freezers is not recommended. Avoid repeated freeze/thaw cycles. Suggest spin the vial prior to opening. The antibody solution should be gently mixed before use.
Note	For laboratory research only, not for drug, diagnostic or other use.

Bioinformation

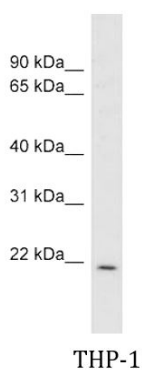
Gene Symbol	CUTA
Gene Full Name	cutA divalent cation tolerance homolog (E. coli)
Function	May form part of a complex of membrane proteins attached to acetylcholinesterase (AChE). [UniProt]
Calculated Mw	19 kDa
PTM	O-glycosylated. [UniProt]

Images



ARG42599 anti-CutA antibody IHC-P image

Immunohistochemistry: Formalin-fixed and paraffin-embedded Human kidney tissue. Antigen Retrieval: Heat mediation. The tissue section was stained with ARG42599 anti-CutA antibody at 10 µg/ml dilution.



ARG42599 anti-CutA antibody WB image

Western blot: THP-1 cell lysate stained with ARG42599 anti-CutA antibody at 0.2 - 1 µg/ml dilution.