

ARG42487 anti-CD15 antibody

Package: 100 µl
Store at: -20°C

Summary

Product Description	Rabbit Polyclonal antibody recognizes CD15
Tested Reactivity	Hu, Ms, Rat
Tested Application	ICC/IF, IHC-P, WB
Host	Rabbit
Clonality	Polyclonal
Isotype	IgG
Target Name	CD15
Species	Human
Immunogen	Synthetic peptide within aa. 200-300 of Human CD15 (NP_002024.1).
Conjugation	Un-conjugated
Alternate Names	LeX; CD15; ELFT; FCT3A; FUTIV; SSEA-1; FUC-TIV; Alpha-(1,3)-fucosyltransferase 4; EC 2.4.1.-; ELAM-1 ligand fucosyltransferase; Fucosyltransferase 4; Fucosyltransferase IV; Fuc-TIV; FucT-IV; Galactoside 3-L-fucosyltransferase

Application Instructions

Application table	Application	Dilution
	ICC/IF	1:50 - 1:200
	IHC-P	1:50 - 1:200
	WB	1:500 - 1:2000
Application Note	* The dilutions indicate recommended starting dilutions and the optimal dilutions or concentrations should be determined by the scientist.	
Observed Size	~ 59 kDa	

Properties

Form	Liquid
Purification	Affinity purified.
Buffer	PBS (pH 7.3), 0.02% Sodium azide and 50% Glycerol.
Preservative	0.02% Sodium azide
Stabilizer	50% Glycerol
Storage instruction	For continuous use, store undiluted antibody at 2-8°C for up to a week. For long-term storage, aliquot and store at -20°C. Storage in frost free freezers is not recommended. Avoid repeated freeze/thaw cycles. Suggest spin the vial prior to opening. The antibody solution should be gently mixed before use.

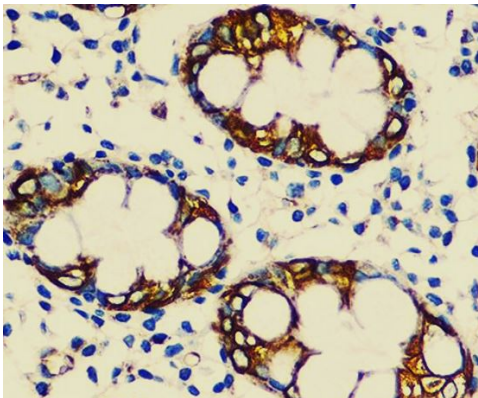
Note

For laboratory research only, not for drug, diagnostic or other use.

Bioinformation

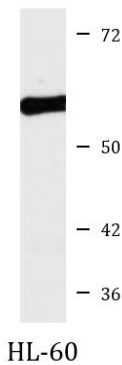
Gene Symbol	FUT4
Gene Full Name	fucosyltransferase 4 (alpha (1,3) fucosyltransferase, myeloid-specific)
Background	The product of this gene transfers fucose to N-acetylglucosamine polysaccharides to generate fucosylated carbohydrate structures. It catalyzes the synthesis of the non-sialylated antigen, Lewis x (CD15). [provided by RefSeq, Jan 2009]
Function	May catalyze alpha-1,3 glycosidic linkages involved in the expression of Lewis X/SSEA-1 and VIM-2 antigens. [UniProt]
Calculated Mw	59 kDa
Cellular Localization	Golgi apparatus, Golgi stack membrane; Single-pass type II membrane protein. Note=Membrane-bound form in trans cisternae of Golgi. [UniProt]

Images



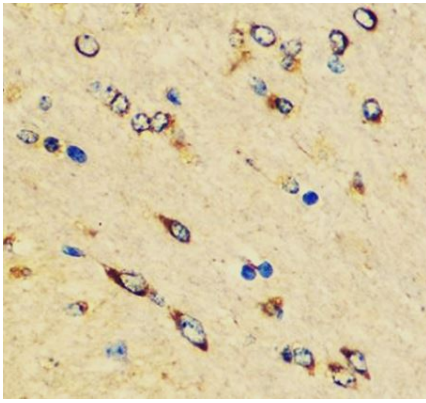
ARG42487 anti-CD15 antibody IHC-P image

Immunohistochemistry: Paraffin-embedded Human colon tissue stained with ARG42487 anti-CD15 antibody at 1:100 dilution.



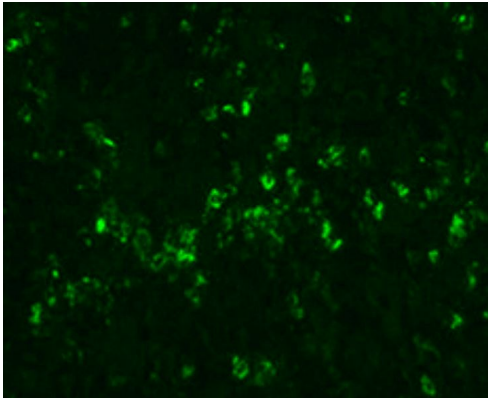
ARG42487 anti-CD15 antibody WB image

Western blot: 25 µg of HL-60 cell lysate stained with ARG42487 anti-CD15 antibody at 1:1000 dilution.



ARG42487 anti-CD15 antibody IHC-P image

Immunohistochemistry: Paraffin-embedded Mouse brain tissue stained with ARG42487 anti-CD15 antibody at 1:100 dilution.



ARG42487 anti-CD15 antibody IHC image

Immunohistochemistry: Paraffin-embedded Human colon carcinoma tissue stained with ARG42487 anti-CD15 antibody at 1:100 dilution.
