

## ARG42472 anti-IL2 Receptor gamma antibody

Package: 50 µg  
Store at: -20°C

### Summary

Product Description	Rabbit Polyclonal antibody recognizes IL2 Receptor gamma
Tested Reactivity	Hu
Tested Application	WB
Host	Rabbit
Clonality	Polyclonal
Isotype	IgG
Target Name	IL2 Receptor gamma
Species	Human
Immunogen	Synthetic peptide corresponding to aa. 88-102 of Human IL2 Receptor gamma. (HYWYKNSDNDKVQKC)
Conjugation	Un-conjugated
Alternate Names	IL-2R subunit gamma; IMD4; CD132; P64; p64; CD antigen CD132; Interleukin-2 receptor subunit gamma; SCIDX; CIDX; Cytokine receptor common subunit gamma; gammaC; SCIDX1; IL-2 receptor subunit gamma; IL-2RG

### Application Instructions

Application table	<table> <tr> <th>Application</th><th>Dilution</th></tr> <tr> <td>WB</td><td>1:500 - 1:2000</td></tr> </table>	Application	Dilution	WB	1:500 - 1:2000
Application	Dilution				
WB	1:500 - 1:2000				
Application Note	* The dilutions indicate recommended starting dilutions and the optimal dilutions or concentrations should be determined by the scientist.				
Observed Size	~ 45 kDa				

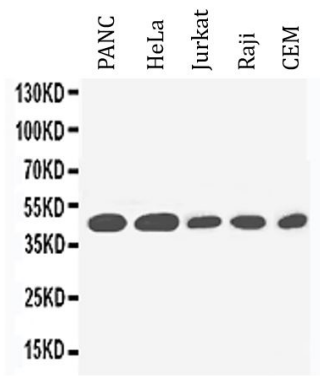
### Properties

Form	Liquid
Purification	Affinity purification with immunogen.
Buffer	0.2% Na <sub>2</sub> HPO <sub>4</sub> , 0.9% NaCl, 0.05% Sodium azide, 0.05% Thimerosal and 5% BSA.
Preservative	0.05% Sodium azide and 0.05% Thimerosal
Stabilizer	5% BSA
Concentration	0.5 mg/ml
Storage instruction	For continuous use, store undiluted antibody at 2-8°C for up to a week. For long-term storage, aliquot and store at -20°C or below. Storage in frost free freezers is not recommended. Avoid repeated freeze/thaw cycles. Suggest spin the vial prior to opening. The antibody solution should be gently mixed before use.
Note	For laboratory research only, not for drug, diagnostic or other use.

Bioinformation

Gene Symbol	IL2RG
Gene Full Name	interleukin 2 receptor, gamma
Background	The protein encoded by this gene is an important signaling component of many interleukin receptors, including those of interleukin -2, -4, -7 and -21, and is thus referred to as the common gamma chain. Mutations in this gene cause X-linked severe combined immunodeficiency (XSCID), as well as X-linked combined immunodeficiency (XCID), a less severe immunodeficiency disorder. [provided by RefSeq, Mar 2010]
Function	Common subunit for the receptors for a variety of interleukins. Probably in association with IL15RA, involved in the stimulation of neutrophil phagocytosis by IL15 (PubMed:15123770). [UniProt]
Calculated Mw	42 kDa
Cellular Localization	Membrane; Single-pass type I membrane protein. [UniProt]

Images



ARG42472 anti-IL2 Receptor gamma antibody WB image

Western blot: PANC, HeLa, Jurkat, Raji and CEM cell lysates stained with ARG42472 anti-IL2 Receptor gamma antibody.