

ARG42471 anti-IL2 Receptor gamma antibody

Package: 100 µl
Store at: -20°C

Summary

Product Description	Rabbit Polyclonal antibody recognizes IL2 Receptor gamma
Tested Reactivity	Hu
Tested Application	FACS, IHC-P
Host	Rabbit
Clonality	Polyclonal
Isotype	IgG
Target Name	IL2 Receptor gamma
Species	Human
Immunogen	KLH-conjugated synthetic peptide between aa. 76-101 of Human IL2 Receptor gamma.
Conjugation	Un-conjugated
Alternate Names	IL-2R subunit gamma; IMD4; CD132; P64; p64; CD antigen CD132; Interleukin-2 receptor subunit gamma; SCIDX; CIDX; Cytokine receptor common subunit gamma; gammaC; SCIDX1; IL-2 receptor subunit gamma; IL-2RG

Application Instructions

Application table	Application	Dilution
	FACS	1:10 - 1:50
	IHC-P	1:10 - 1:50
Application Note	* The dilutions indicate recommended starting dilutions and the optimal dilutions or concentrations should be determined by the scientist.	

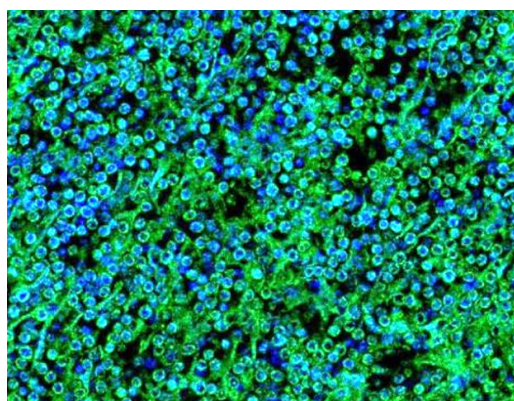
Properties

Form	Liquid
Purification	Purification with Protein A and immunogen peptide.
Buffer	PBS and 0.09% (W/V) Sodium azide.
Preservative	0.09% (W/V) Sodium azide
Storage instruction	For continuous use, store undiluted antibody at 2-8°C for up to a week. For long-term storage, aliquot and store at -20°C or below. Storage in frost free freezers is not recommended. Avoid repeated freeze/thaw cycles. Suggest spin the vial prior to opening. The antibody solution should be gently mixed before use.
Note	For laboratory research only, not for drug, diagnostic or other use.

Bioinformation

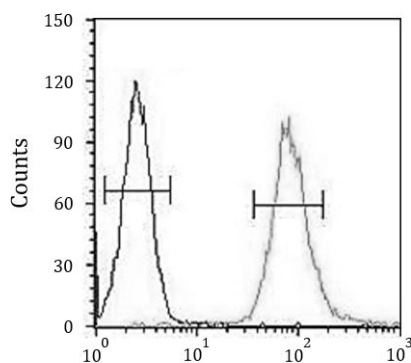
Gene Symbol	IL2RG
Gene Full Name	interleukin 2 receptor, gamma
Background	The protein encoded by this gene is an important signaling component of many interleukin receptors, including those of interleukin -2, -4, -7 and -21, and is thus referred to as the common gamma chain. Mutations in this gene cause X-linked severe combined immunodeficiency (XSCID), as well as X-linked combined immunodeficiency (XCID), a less severe immunodeficiency disorder. [provided by RefSeq, Mar 2010]
Function	Common subunit for the receptors for a variety of interleukins. Probably in association with IL15RA, involved in the stimulation of neutrophil phagocytosis by IL15 (PubMed:15123770). [UniProt]
Calculated Mw	42 kDa
Cellular Localization	Membrane; Single-pass type I membrane protein. [UniProt]

Images



ARG42471 anti-IL2 Receptor gamma antibody IHC image

Immunofluorescence: 4% Paraformaldehyde-fixed, 0.1% Triton X-100 permeabilized Human spleen tissue stained with ARG42471 anti-IL2 Receptor gamma antibody (green) at 1:25 dilution. DAPI (blue) for nuclear staining.



ARG42471 anti-IL2 Receptor gamma antibody FACS image

Flow Cytometry: HL-60 cells stained with ARG42471 anti-IL2 Receptor gamma antibody (right histogram) or without primary antibody as control (left histogram), followed by incubation with FITC labelled secondary antibody.