

ARG42430 anti-TSPAN7 antibody [B2D] (PE)

Package: 50 tests
Store at: 4°C

Summary

Product Description	PE-conjugated Mouse Monoclonal antibody [B2D] recognizes TSPAN7
Tested Reactivity	Hu
Tested Application	FACS
Specificity	The mouse monoclonal antibody B2D recognizes an extracellular epitope of CD231 (TALLA-1, tetraspanin 7), a transmembrane glycoprotein expressed in neuronal tissue and T-ALL.
Host	Mouse
Clonality	Monoclonal
Clone	B2D
Isotype	IgG1
Target Name	TSPAN7
Species	Human
Immunogen	Human T-ALL cell line THP-6.
Conjugation	PE
Alternate Names	A15; CCG-B7; Tetraspanin-7; Transmembrane 4 superfamily member 2; CD antigen CD231; TM4SF2; Tspan-7; Cell surface glycoprotein A15; TM4SF2b; CD231; DXS1692E; Membrane component chromosome X surface marker 1; T-cell acute lymphoblastic leukemia-associated antigen 1; TALLA-1; MRX58; MXS1

Application Instructions

Application table	Application	Dilution
	FACS	10 µl / 100 µl of whole blood or 10 ⁶ cells
Application Note	* The dilutions indicate recommended starting dilutions and the optimal dilutions or concentrations should be determined by the scientist.	

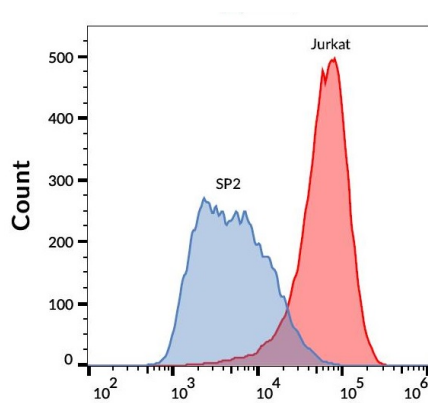
Properties

Form	Liquid
Purification	Purified
Buffer	PBS and 15 mM Sodium azide.
Preservative	15 mM Sodium azide
Storage instruction	Aliquot and store in the dark at 2-8°C. Keep protected from prolonged exposure to light. Avoid repeated freeze/thaw cycles. Suggest spin the vial prior to opening. The antibody solution should be gently mixed before use.
Note	For laboratory research only, not for drug, diagnostic or other use.

Bioinformation

Gene Symbol	TSPAN7
Gene Full Name	tetraspanin 7
Background	The protein encoded by this gene is a member of the transmembrane 4 superfamily, also known as the tetraspanin family. Most of these members are cell-surface proteins that are characterized by the presence of four hydrophobic domains. The proteins mediate signal transduction events that play a role in the regulation of cell development, activation, growth and motility. This encoded protein is a cell surface glycoprotein and may have a role in the control of neurite outgrowth. It is known to complex with integrins. This gene is associated with X-linked cognitive disability and neuropsychiatric diseases such as Huntington's chorea, fragile X syndrome and myotonic dystrophy. [provided by RefSeq, Jul 2008]
Function	May be involved in cell proliferation and cell motility. [UniProt]
Calculated Mw	28 kDa
Cellular Localization	Membrane; Multi-pass membrane protein. [UniProt]

Images



ARG42430 anti-TSPAN7 antibody [B2D] (PE) FACS image

Flow Cytometry: Jurkat cells stained with ARG42430 anti-TSPAN7 antibody [B2D] (PE).