

## ARG42422 anti-CD300a + CD300c antibody [MEM-260] (APC)

Package: 50 tests  
Store at: 4°C

### Summary

Product Description	APC-conjugated Mouse Monoclonal antibody [MEM-260] recognizes CD300a + CD300c
Tested Reactivity	Hu
Tested Application	FACS
Specificity	The antibody MEM-260 reacts with an extracellular epitope of CD300a, a 60 kDa leukocyte transmembrane glycoprotein expressed on human granulocytes, monocytes, neutrophils, NK cells, mast cells and dendritic cells, 25% of circulating T cells and 15% of circulating B cells.
Host	Mouse
Clonality	Monoclonal
Clone	MEM-260
Isotype	IgG1
Target Name	CD300a + CD300c
Species	Human
Immunogen	HPB Human acute lymphoid leukemia cell line.
Conjugation	APC
Alternate Names	CMRF-35-H9; Inhibitory receptor protein 60; NK inhibitory receptor; CMRF35-H; CMRF35H9; CD antigen CD300a; IRC1/IRC2; IGSF12; CMRF35H; IRp60; IgSF12; CMRF35-like molecule 8; CMRF35-H9; CMRF-35H; CD300 antigen-like family member A; CLM-8; IRC1; IRC2; Immunoglobulin superfamily member 12

### Application Instructions

Application table	<table> <tr> <th>Application</th><th>Dilution</th></tr> <tr> <td>FACS</td><td>10 µl / 100 µl of whole blood or 10<sup>6</sup> cells</td></tr> </table>	Application	Dilution	FACS	10 µl / 100 µl of whole blood or 10 <sup>6</sup> cells
Application	Dilution				
FACS	10 µl / 100 µl of whole blood or 10 <sup>6</sup> cells				
Application Note	* The dilutions indicate recommended starting dilutions and the optimal dilutions or concentrations should be determined by the scientist.				

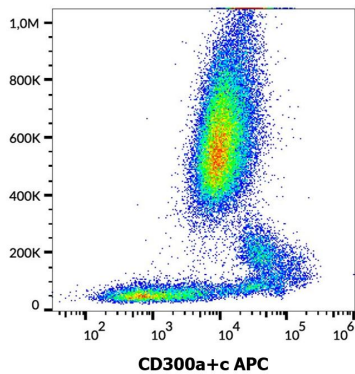
### Properties

Form	Liquid
Purification	Purified
Buffer	PBS and 15 mM Sodium azide.
Preservative	15 mM Sodium azide
Storage instruction	Aliquot and store in the dark at 2-8°C. Keep protected from prolonged exposure to light. Avoid repeated freeze/thaw cycles. Suggest spin the vial prior to opening. The antibody solution should be gently mixed before use.
Note	For laboratory research only, not for drug, diagnostic or other use.

Bioinformation

Gene Symbol	CD300A
Gene Full Name	CD300a molecule
Background	This gene encodes a member of the CD300 glycoprotein family of cell surface proteins found on leukocytes involved in immune response signaling pathways. This gene is located on chromosome 17 in a cluster with all but one of the other family members. Multiple transcript variants encoding different isoforms have been found for this gene. [provided by RefSeq, Feb 2012]
Function	Inhibitory receptor which may contribute to the down-regulation of cytolytic activity in natural killer (NK) cells, and to the down-regulation of mast cell degranulation (PubMed:10746781, PubMed:16339535, PubMed:9701027). Negatively regulates the Toll-like receptor (TLR) signaling mediated by MYD88 but not TRIF through activation of PTPN6 (PubMed:22043923). [UniProt]
Calculated Mw	33 kDa
PTM	Phosphorylated on tyrosine.  N-glycosylated. [UniProt]
Cellular Localization	Cell membrane; Single-pass type I membrane protein. [UniProt]

Images



ARG42422 anti-CD300a + CD300c antibody [MEM-260] (APC) FACS image

Flow Cytometry: Human peripheral blood cells stained with ARG42422 anti-CD300a + CD300c antibody [MEM-260] (APC).