

ARG42420 anti-CD132 / IL2RG antibody [TUGh4] (PE)

Package: 50 tests
Store at: 4°C

Summary

Product Description	PE-conjugated Rat Monoclonal antibody [TUGh4] recognizes CD132 / IL2RG
Tested Reactivity	Hu, Dog
Tested Application	FACS
Specificity	The rat monoclonal antibody TUGh4 recognizes an extracellular epitope of CD132 (the common gamma chain), a 65-70 kDa type I transmembrane glycoprotein broadly expressed by most leukocytes.
Host	Rat
Clonality	Monoclonal
Clone	TUGh4
Isotype	IgG2b, kappa
Target Name	CD132 / IL2RG
Species	Human
Immunogen	Human CD132-transfected cell line.
Conjugation	PE
Alternate Names	IL-2R subunit gamma; IMD4; CD132; P64; p64; CD antigen CD132; Interleukin-2 receptor subunit gamma; SCIDX; CIDX; Cytokine receptor common subunit gamma; gammaC; SCIDX1; IL-2 receptor subunit gamma; IL-2RG

Application Instructions

Application table	Application	Dilution
	FACS	10 µl / 100 µl of whole blood or 10 ⁶ cells
Application Note	* The dilutions indicate recommended starting dilutions and the optimal dilutions or concentrations should be determined by the scientist.	

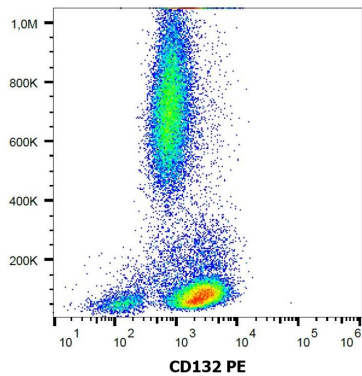
Properties

Form	Liquid
Purification	Purified
Buffer	PBS and 15 mM Sodium azide.
Preservative	15 mM Sodium azide
Storage instruction	Aliquot and store in the dark at 2-8°C. Keep protected from prolonged exposure to light. Avoid repeated freeze/thaw cycles. Suggest spin the vial prior to opening. The antibody solution should be gently mixed before use.
Note	For laboratory research only, not for drug, diagnostic or other use.

Bioinformation

Gene Symbol	IL2RG
Gene Full Name	interleukin 2 receptor, gamma
Background	The protein encoded by this gene is an important signaling component of many interleukin receptors, including those of interleukin -2, -4, -7 and -21, and is thus referred to as the common gamma chain. Mutations in this gene cause X-linked severe combined immunodeficiency (XSCID), as well as X-linked combined immunodeficiency (XCID), a less severe immunodeficiency disorder. [provided by RefSeq, Mar 2010]
Function	Common subunit for the receptors for a variety of interleukins. Probably in association with IL15RA, involved in the stimulation of neutrophil phagocytosis by IL15 (PubMed:15123770). [UniProt]
Calculated Mw	42 kDa
Cellular Localization	Membrane; Single-pass type I membrane protein. [UniProt]

Images



ARG42420 anti-CD132 / IL2RG antibody [TUGh4] (PE) FACS image

Flow Cytometry: Human peripheral blood stained with ARG42420 anti-CD132 / IL2RG antibody [TUGh4] (PE).