

ARG42398 Mouse anti-Human Lambda Light Chain antibody [1-155-2] (PE)

Package: 50 tests
Store at: 4°C

Summary

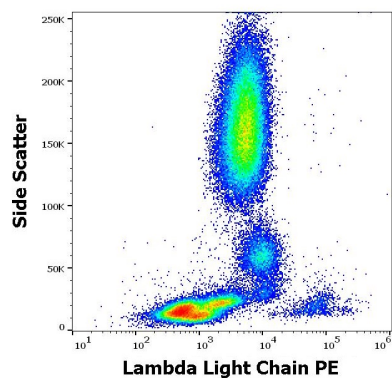
Product Description	PE-conjugated Mouse Monoclonal antibody [1-155-2] recognizes Human Lambda Light Chain
Tested Reactivity	Hu
Tested Application	FACS
Specificity	The mouse monoclonal antibody 1-155-2 recognizes lambda light chains (22.5 kDa) of human immunoglobulin.
Host	Mouse
Clonality	Monoclonal
Clone	1-155-2
Isotype	IgG1, kappa
Target Name	Lambda Light Chain
Species	Human
Immunogen	Human IgA1 lambda myeloma protein.
Conjugation	PE

Application Instructions

Application table	Application	Dilution
	FACS	10 µl / 100 µl of whole blood or 10 ⁶ cells
Application Note	* The dilutions indicate recommended starting dilutions and the optimal dilutions or concentrations should be determined by the scientist.	

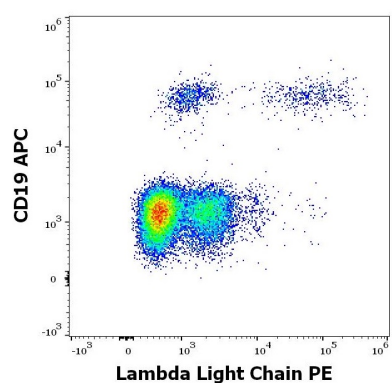
Properties

Form	Liquid
Purification	Purified
Buffer	PBS and 15 mM Sodium azide.
Preservative	15 mM Sodium azide
Storage instruction	Aliquot and store in the dark at 2-8°C. Keep protected from prolonged exposure to light. Avoid repeated freeze/thaw cycles. Suggest spin the vial prior to opening. The antibody solution should be gently mixed before use.
Note	For laboratory research only, not for drug, diagnostic or other use.



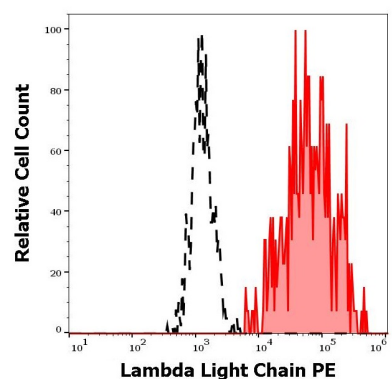
ARG42398 Mouse anti-Human Lambda Light Chain antibody [1-155-2] (PE) FACS image

Flow Cytometry: Human peripheral whole blood stained with ARG42398 Mouse anti-Human Lambda Light Chain antibody [1-155-2] (PE) at 10 μ l / 100 μ l of peripheral whole blood.



ARG42398 Mouse anti-Human Lambda Light Chain antibody [1-155-2] (PE) FACS image

Flow Cytometry: Human lymphocytes stained with ARG42398 Mouse anti-Human Lambda Light Chain antibody [1-155-2] (PE) at 10 μ l / 100 μ l of peripheral whole blood and co-stained with [ARG53782](#) anti-CD19 antibody [LT19] (APC) at 10 μ l / 100 μ l of peripheral whole blood.



ARG42398 Mouse anti-Human Lambda Light Chain antibody [1-155-2] (PE) FACS image

Flow Cytometry: Separation of Human Ig Lambda Light Chain positive B cells (red-filled) from Ig Lambda Light Chain negative B cells (black-dashed). Human peripheral whole blood stained with ARG42398 Mouse anti-Human Lambda Light Chain antibody [1-155-2] (PE) at 10 μ l / 100 μ l of peripheral whole blood.