

ARG42395 Mouse anti-Human Kappa Light Chain antibody [TB28-2] (Biotin)

Package: 100 µg
Store at: 4°C

Summary

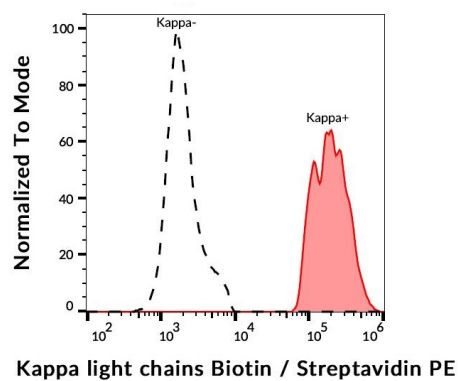
Product Description	Biotin-conjugated Mouse Monoclonal antibody [TB28-2] recognizes Human Kappa Light Chain
Tested Reactivity	Hu
Tested Application	FACS
Specificity	The antibody TB28-2 recognizes human Ig kappa light chains of both secreted and cell surface immunoglobulin. It detects also free kappa light chains.
Host	Mouse
Clonality	Monoclonal
Clone	TB28-2
Isotype	IgG1, kappa
Target Name	Kappa Light Chain
Species	Human
Immunogen	Human IgG-kappa myeloma protein.
Conjugation	Biotin

Application Instructions

Application table	Application	Dilution
	FACS	1 - 12 µg/ml
Application Note	* The dilutions indicate recommended starting dilutions and the optimal dilutions or concentrations should be determined by the scientist.	

Properties

Form	Liquid
Purification	Purified
Buffer	PBS and 15 mM Sodium azide.
Preservative	15 mM Sodium azide
Concentration	1 mg/ml
Storage instruction	Aliquot and store in the dark at 2-8°C. Keep protected from prolonged exposure to light. Avoid repeated freeze/thaw cycles. Suggest spin the vial prior to opening. The antibody solution should be gently mixed before use.
Note	For laboratory research only, not for drug, diagnostic or other use.



ARG42395 Mouse anti-Human Kappa Light Chain antibody [TB28-2] (Biotin) FACS image

Flow Cytometry: Human peripheral blood cells stained with ARG42395 Mouse anti-Human Kappa Light Chain antibody [TB28-2] (Biotin), followed by Streptavidin-PE.