

## ARG42239 anti-NPY1R antibody

Package: 50 µl  
Store at: -20°C

### Summary

Product Description	Rabbit Polyclonal antibody recognizes NPY1R
Tested Reactivity	Hu
Tested Application	IHC-P, WB
Host	Rabbit
Clonality	Polyclonal
Isotype	IgG
Target Name	NPY1R
Species	Human
Immunogen	Synthetic peptide of Human NPY1R.
Conjugation	Un-conjugated
Alternate Names	NPYR; Neuropeptide Y receptor type 1; NPY1-R

### Application Instructions

Application table	Application	Dilution
	IHC-P	1:25 - 1:100
	WB	1:500 - 1:2000
Application Note	* The dilutions indicate recommended starting dilutions and the optimal dilutions or concentrations should be determined by the scientist.	
Positive Control	WB: Human fetal brain IHC-P: Human gastric cancer and human cervical cancer	
Observed Size	~ 48 kDa	

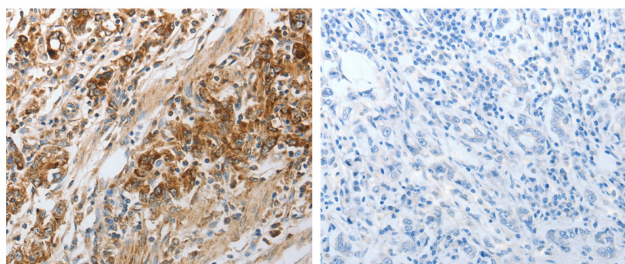
### Properties

Form	Liquid
Purification	Affinity purification with immunogen.
Buffer	PBS (pH 7.4), 0.05% Sodium azide and 40% Glycerol.
Preservative	0.05% Sodium azide
Stabilizer	40% Glycerol
Concentration	0.3 mg/ml
Storage instruction	For continuous use, store undiluted antibody at 2-8°C for up to a week. For long-term storage, aliquot and store at -20°C. Storage in frost free freezers is not recommended. Avoid repeated freeze/thaw cycles. Suggest spin the vial prior to opening. The antibody solution should be gently mixed before use.

## Bioinformation

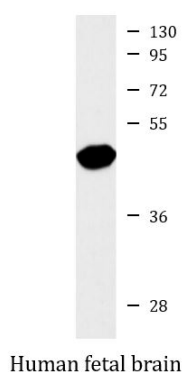
Gene Symbol	NPY1R
Gene Full Name	neuropeptide Y receptor Y1
Background	This gene belongs to the G-protein-coupled receptor superfamily. The encoded transmembrane protein mediates the function of neuropeptide Y (NPY), a neurotransmitter, and peptide YY (PYY), a gastrointestinal hormone. The encoded receptor undergoes fast agonist-induced internalization through clathrin-coated pits and is subsequently recycled back to the cell membrane. Activation of Y1 receptors may result in mobilization of intracellular calcium and inhibition of adenylate cyclase activity. [provided by RefSeq, Aug 2013]
Function	Receptor for neuropeptide Y and peptide YY. The rank order of affinity of this receptor for pancreatic polypeptides is NPY > [Pro-34] PYY, PYY and [Leu-31, Pro-34] NPY > NPY (2-36) > [Ile-31, Gln-34] PP and PYY (3-36) > PP > NPY free acid. [UniProt]
Highlight	Related news: <a href="#">Studying obesity and appetite control by quantifying orexigenic and anorexigenic hormones;</a>
Calculated Mw	44 kDa
Cellular Localization	Cell membrane; Multi-pass membrane protein. [UniProt]

## Images



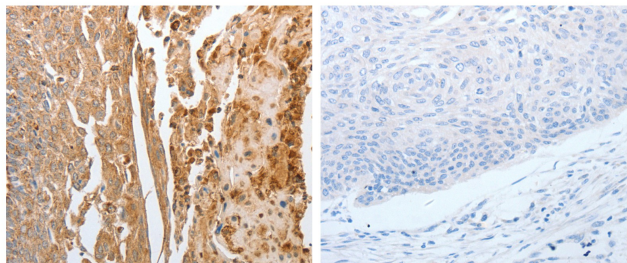
ARG42239 anti-NPY1R antibody IHC-P image

Immunohistochemistry: Paraffin-embedded Human gastric cancer tissue stained with ARG42239 anti-NPY1R antibody (left) at 1:30 dilution, or the same antibody pre-incubated with synthetic peptide (right). (Original magnification: X200).



ARG42239 anti-NPY1R antibody WB image

Western blot: 60 µg of Human fetal brain lysate stained with ARG42239 anti-NPY1R antibody at 1:500 dilution.



#### ARG42239 anti-NPY1R antibody IHC-P image

Immunohistochemistry: Paraffin-embedded Human cervical cancer stained with ARG42239 anti-NPY1R antibody (left) at 1:30 dilution, or the same antibody pre-incubated with synthetic peptide (right). (Original magnification: X200).