

ARG42234 anti-NPTX2 antibody

Package: 50 µg
Store at: -20°C

Summary

Product Description	Rabbit Polyclonal antibody recognizes NPTX2
Tested Reactivity	Hu, Ms, Rat
Tested Application	IHC-P, WB
Host	Rabbit
Clonality	Polyclonal
Isotype	IgG
Target Name	NPTX2
Species	Human
Immunogen	A 16 amino acid peptide within aa. 170-220 of Human NPTX2.
Conjugation	Un-conjugated
Alternate Names	Neuronal pentraxin II; Neuronal pentraxin-2; NP-II; NARP; NP2

Application Instructions

Application table	Application	Dilution
	IHC-P	5 - 20 µg/ml
	WB	0.5 - 4 µg/ml
Application Note	* The dilutions indicate recommended starting dilutions and the optimal dilutions or concentrations should be determined by the scientist.	
Observed Size	43 ~ 47 kDa	

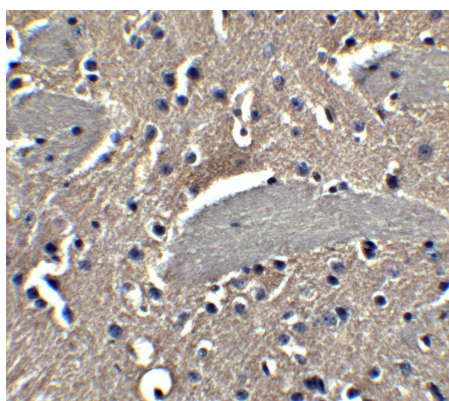
Properties

Form	Liquid
Purification	Affinity purification with immunogen.
Buffer	PBS and 0.02% Sodium azide.
Preservative	0.02% Sodium azide
Concentration	1 mg/ml
Storage instruction	For continuous use, store undiluted antibody at 2-8°C for up to a week. For long-term storage, aliquot and store at -20°C or below. Storage in frost free freezers is not recommended. Avoid repeated freeze/thaw cycles. Suggest spin the vial prior to opening. The antibody solution should be gently mixed before use.
Note	For laboratory research only, not for drug, diagnostic or other use.

Bioinformation

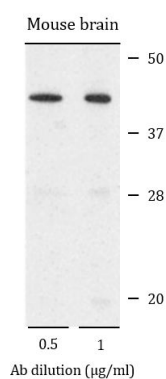
Gene Symbol	NPTX2
Gene Full Name	neuronal pentraxin II
Background	This gene encodes a member of the family of neuronal petraxins, synaptic proteins that are related to C-reactive protein. This protein is involved in excitatory synapse formation. It also plays a role in clustering of alpha-amino-3-hydroxy-5-methyl-4-isoxazolepropionic acid (AMPA)-type glutamate receptors at established synapses, resulting in non-apoptotic cell death of dopaminergic nerve cells. Up-regulation of this gene in Parkinson disease (PD) tissues suggests that the protein may be involved in the pathology of PD. [provided by RefSeq, Feb 2009]
Function	Likely to play role in the modification of cellular properties that underlie long-term plasticity. Binds to agar matrix in a calcium-dependent manner (By similarity). [UniProt]
Calculated Mw	47 kDa
Cellular Localization	Secreted. [UniProt]

Images



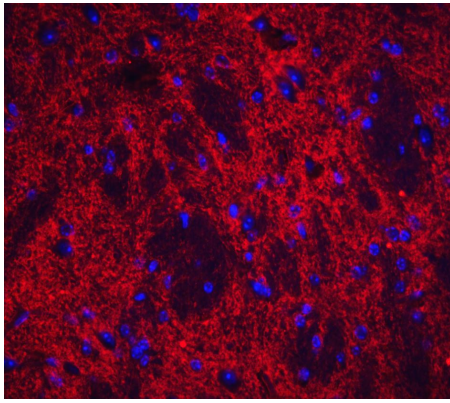
ARG42234 anti-NPTX2 antibody IHC-P image

Immunohistochemistry: Paraffin-embedded Mouse brain tissue. Tissue was fixed with formaldehyde and blocked with 10% serum for 1 hour at RT. Antigen Retrieval: Heat mediation was performed in Citrate buffer (pH 6.0). The tissue section was stained with ARG42234 anti-NPTX2 antibody at 5 µg/ml dilution, overnight at 4°C.



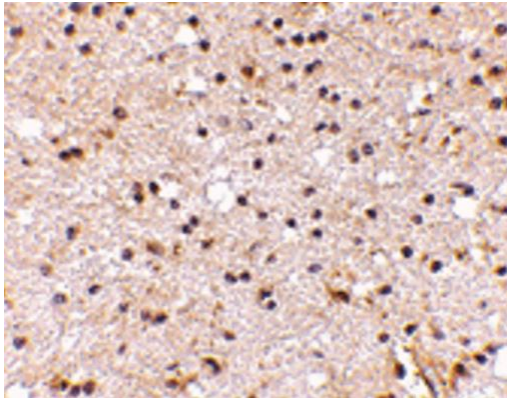
ARG42234 anti-NPTX2 antibody WB image

Western blot: 15 µg of Mouse brain lysate stained with ARG42234 anti-NPTX2 antibody at 0.5 or 1 µg/ml dilution and incubated at RT for 1 hour, in 5% NFDm/TBST.



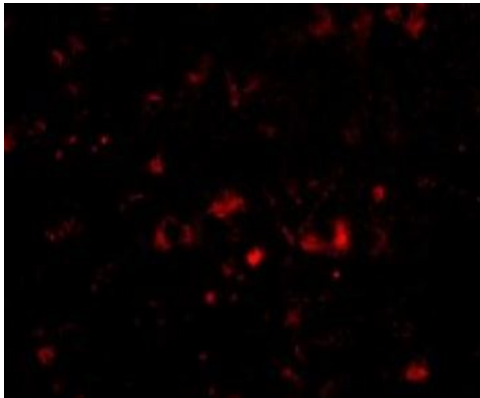
ARG42234 anti-NPTX2 antibody IHC-P image

Immunohistochemistry: 4% Paraformaldehyde-fixed Mouse brain tissue stained with ARG42234 anti-NPTX2 antibody (red) at 20 µg/ml dilution. DAPI (blue) for nuclear staining.



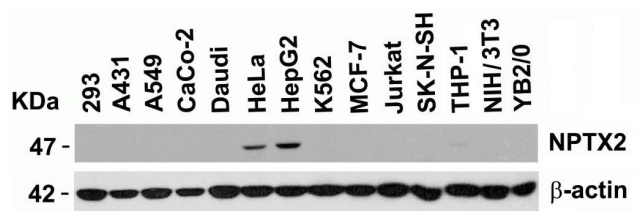
ARG42234 anti-NPTX2 antibody IHC-P image

Immunohistochemistry: Paraffin-embedded Human brain tissue. Tissue was fixed with formaldehyde and blocked with 10% serum for 1 hour at RT. Antigen Retrieval: Heat mediation was performed in Citrate buffer (pH 6.0). The tissue section was stained with ARG42234 anti-NPTX2 antibody at 5 µg/ml dilution, overnight at 4°C.



ARG42234 anti-NPTX2 antibody IHC-P image

Immunohistochemistry: 4% Paraformaldehyde-fixed Human brain tissue stained with ARG42234 anti-NPTX2 antibody at 20 µg/ml dilution.



ARG42234 anti-NPTX2 antibody WB image

Western blot: 15 µg of 293, A431, A549, CaCo-2, Daudi, HeLa, HepG2, K562, MCF-7, Jurkat, SK-N-SH, THP-1, NIH/3T3 and YB2/O cell lysates stained with ARG42234 anti-NPTX2 antibody at 2 µg/ml dilution and incubated at RT for 1 hour, in 5% NFDm/TBST.