

ARG42215 anti-ADAM22 antibody

Package: 100 µl
Store at: -20°C

Summary

Product Description	Rabbit Polyclonal antibody recognizes ADAM22
Tested Reactivity	Hu, Ms, Rat
Tested Application	WB
Host	Rabbit
Clonality	Polyclonal
Isotype	IgG
Target Name	ADAM22
Species	Human
Immunogen	Recombinant fusion protein corresponding to aa. 223-400 of Human ADAM22 (NP_004185.1).
Conjugation	Un-conjugated
Alternate Names	MDC2; Disintegrin and metalloproteinase domain-containing protein 22; ADAM 22; Metalloproteinase-like, disintegrin-like, and cysteine-rich protein 2; Metalloproteinase-disintegrin ADAM22-3

Application Instructions

Application table	Application	Dilution
	WB	1:1000 - 1:4000
Application Note	* The dilutions indicate recommended starting dilutions and the optimal dilutions or concentrations should be determined by the scientist.	
Positive Control	Rat kidney	
Observed Size	~ 100kDa	

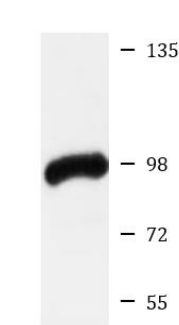
Properties

Form	Liquid
Purification	Affinity purified.
Buffer	PBS (pH 7.3), 0.02% Sodium azide and 50% Glycerol.
Preservative	0.02% Sodium azide
Stabilizer	50% Glycerol
Storage instruction	For continuous use, store undiluted antibody at 2-8°C for up to a week. For long-term storage, aliquot and store at -20°C. Storage in frost free freezers is not recommended. Avoid repeated freeze/thaw cycles. Suggest spin the vial prior to opening. The antibody solution should be gently mixed before use.
Note	For laboratory research only, not for drug, diagnostic or other use.

Bioinformation

Gene Symbol	ADAM22
Gene Full Name	ADAM metallopeptidase domain 22
Background	This gene encodes a member of the ADAM (a disintegrin and metalloprotease domain) family. Members of this family are membrane-anchored proteins structurally related to snake venom disintegrins, and have been implicated in a variety of biological processes involving cell-cell and cell-matrix interactions, including fertilization, muscle development, and neurogenesis. Unlike other members of the ADAM protein family, the protein encoded by this gene lacks metalloprotease activity since it has no zinc-binding motif. This gene is highly expressed in the brain and may function as an integrin ligand in the brain. In mice, it has been shown to be essential for correct myelination in the peripheral nervous system. Alternative splicing results in several transcript variants. [provided by RefSeq, Dec 2010]
Function	Probable ligand for integrin in the brain. This is a non catalytic metalloprotease-like protein (PubMed:19692335). Involved in regulation of cell adhesion and spreading and in inhibition of cell proliferation. Neuronal receptor for LGI1. [UniProt]
Calculated Mw	100 kDa
PTM	The precursor is cleaved by a furin endopeptidase. [UniProt]
Cellular Localization	Membrane; Single-pass type I membrane protein. Cell projection, axon. [UniProt]

Images



Rat kidney

ARG42215 anti-ADAM22 antibody WB image

Western blot: 25 µg of Rat kidney lysate stained with ARG42215 anti-ADAM22 antibody at 1:1000 dilution.