

ARG42196 anti-PHF21A / BHC80 antibody

Package: 50 µg
Store at: -20°C

Summary

Product Description	Rabbit Polyclonal antibody recognizes PHF21A / BHC80
Tested Reactivity	Hu, Ms, Rat
Tested Application	FACS, IHC-P, WB
Host	Rabbit
Clonality	Polyclonal
Isotype	IgG
Target Name	PHF21A / BHC80
Species	Human
Immunogen	Recombinant protein corresponding to M1-Q97 of Human PHF21A / BHC80.
Conjugation	Un-conjugated
Alternate Names	PHD finger protein 21A; BM-006; BHC80a; BHC80; BRAF35-HDAC complex protein BHC80

Application Instructions

Application table	Application	Dilution
	FACS	1:150 - 1:500
	IHC-P	1:200 - 1:1000
	WB	1:500 - 1:2000
Application Note	IHC-P: Antigen Retrieval: Heat mediation was performed in Citrate buffer (pH 6.0, epitope retrieval solution) for 20 min. * The dilutions indicate recommended starting dilutions and the optimal dilutions or concentrations should be determined by the scientist.	
Positive Control	A549, Rat brain and Mouse brain	
Observed Size	~ 95 kDa	

Properties

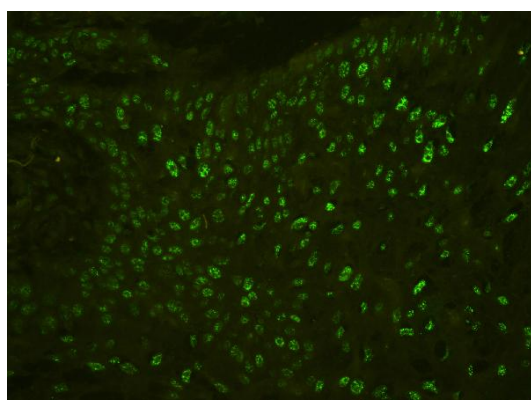
Form	Liquid
Purification	Affinity purification with immunogen.
Buffer	0.2% Na ₂ HPO ₄ , 0.9% NaCl, 0.05% Sodium azide and 4% Trehalose.
Preservative	0.05% Sodium azide
Stabilizer	4% Trehalose
Concentration	0.5 mg/ml

Storage instruction	For continuous use, store undiluted antibody at 2-8°C for up to a week. For long-term storage, aliquot and store at -20°C or below. Storage in frost free freezers is not recommended. Avoid repeated freeze/thaw cycles. Suggest spin the vial prior to opening. The antibody solution should be gently mixed before use.
Note	For laboratory research only, not for drug, diagnostic or other use.

Bioinformation

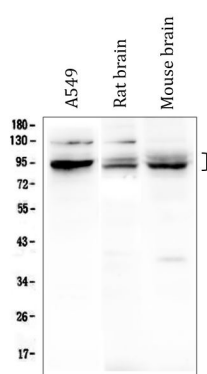
Gene Symbol	PHF21A
Gene Full Name	PHD finger protein 21A
Background	The PHF21A gene encodes BHC80, a component of a BRAF35 (MIM 605535)/histone deacetylase (HDAC; see MIM 601241) complex (BHC) that mediates repression of neuron-specific genes through the cis-regulatory element known as repressor element-1 (RE1) or neural restrictive silencer (NRS) (Hakimi et al., 2002 [PubMed 12032298]).[supplied by OMIM, Nov 2010]
Function	Component of the BHC complex, a corepressor complex that represses transcription of neuron-specific genes in non-neuronal cells. The BHC complex is recruited at RE1/NRSE sites by REST and acts by deacetylating and demethylating specific sites on histones, thereby acting as a chromatin modifier. In the BHC complex, it may act as a scaffold. Inhibits KDM1A-mediated demethylation of 'Lys-4' of histone H3 in vitro, suggesting a role in demethylation regulation. [UniProt]
Calculated Mw	75 kDa
Cellular Localization	Nucleus. [UniProt]

Images



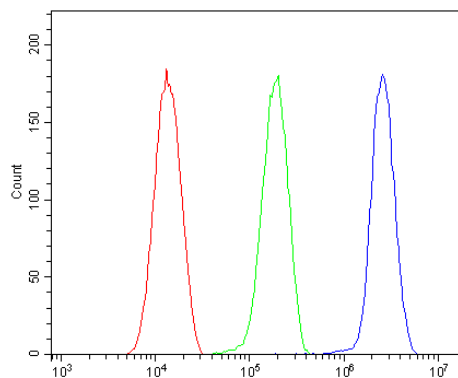
ARG42196 anti-PHF21A / BHC80 antibody IHC-P image

Immunohistochemistry: Paraffin-embedded Human oesophagus squama cancer tissues. Antigen Retrieval: Heat mediation was performed in Citrate buffer (pH 6.0, epitope retrieval solution) for 20 min. The tissue section was blocked with 10% goat serum. The tissue section was then stained with ARG42196 anti-PHF21A / BHC80 antibody at 1 µg/ml dilution, overnight at 4°C.



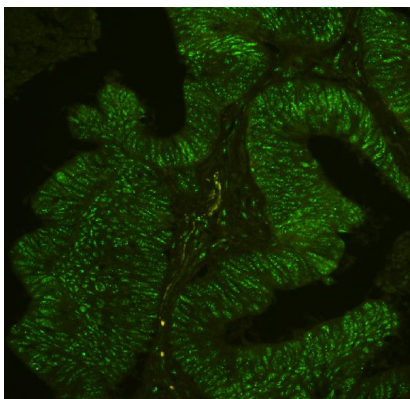
ARG42196 anti-PHF21A / BHC80 antibody WB image

Western blot: 50 µg of samples under reducing conditions. A549, Rat brain and Mouse brain lysates stained with ARG42196 anti-PHF21A / BHC80 antibody at 0.5 µg/ml dilution, overnight at 4°C.



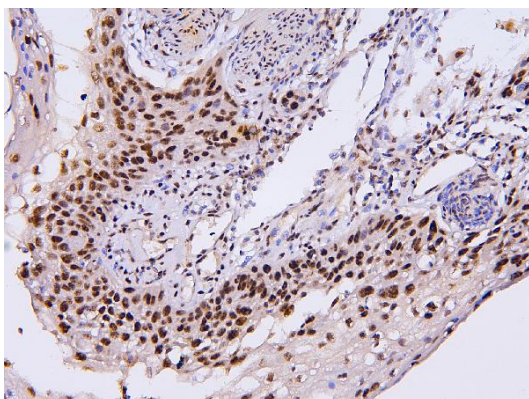
ARG42196 anti-PHF21A / BHC80 antibody FACS image

Flow Cytometry: HeLa cells were blocked with 10% normal goat serum and then stained with ARG42196 anti-PHF21A / BHC80 antibody (blue line) at $1\text{ }\mu\text{g}/10^6$ cells for 30 min at 20°C , followed by incubation with DyLight[®]488 labelled secondary antibody. Isotype control antibody (green line) was Rabbit IgG ($1\text{ }\mu\text{g}/10^6$ cells) used under the same conditions. Unlabelled sample (red line) was also used as a control.



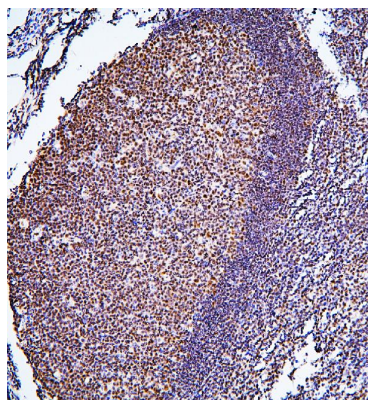
ARG42196 anti-PHF21A / BHC80 antibody IHC-P image

Immunohistochemistry: Paraffin-embedded Human intestinal cancer tissue. Antigen Retrieval: Heat mediation was performed in Citrate buffer (pH 6.0, epitope retrieval solution) for 20 min. The tissue section was blocked with 10% goat serum. The tissue section was then stained with ARG42196 anti-PHF21A / BHC80 antibody at $1\text{ }\mu\text{g}/\text{ml}$ dilution, overnight at 4°C .



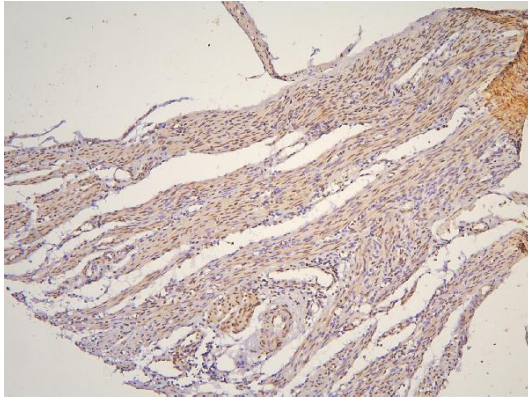
ARG42196 anti-PHF21A / BHC80 antibody IHC-P image

Immunohistochemistry: Paraffin-embedded Human oesophagus squama cancer tissue. Antigen Retrieval: Heat mediation was performed in Citrate buffer (pH 6.0, epitope retrieval solution) for 20 min. The tissue section was blocked with 10% goat serum. The tissue section was then stained with ARG42196 anti-PHF21A / BHC80 antibody at $1\text{ }\mu\text{g}/\text{ml}$ dilution, overnight at 4°C .



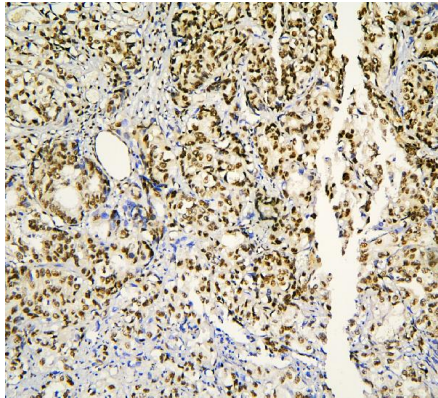
ARG42196 anti-PHF21A / BHC80 antibody IHC-P image

Immunohistochemistry: Paraffin-embedded Human tonsil tissue. Antigen Retrieval: Heat mediation was performed in Citrate buffer (pH 6.0, epitope retrieval solution) for 20 min. The tissue section was blocked with 10% goat serum. The tissue section was then stained with ARG42196 anti-PHF21A / BHC80 antibody at $1\text{ }\mu\text{g}/\text{ml}$ dilution, overnight at 4°C .



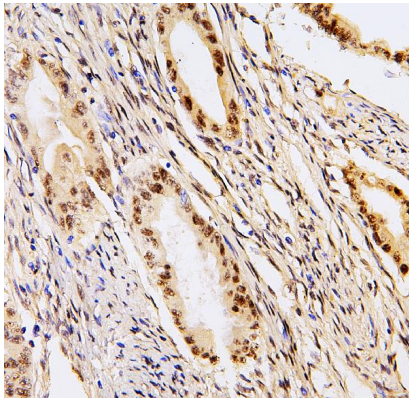
ARG42196 anti-PHF21A / BHC80 antibody IHC-P image

Immunohistochemistry: Paraffin-embedded Human endometrial carcinoma tissue. Antigen Retrieval: Heat mediation was performed in Citrate buffer (pH 6.0, epitope retrieval solution) for 20 min. The tissue section was blocked with 10% goat serum. The tissue section was then stained with ARG42196 anti-PHF21A / BHC80 antibody at 1 µg/ml dilution, overnight at 4°C.



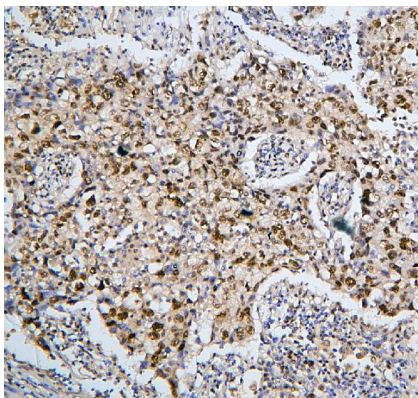
ARG42196 anti-PHF21A / BHC80 antibody IHC-P image

Immunohistochemistry: Paraffin-embedded Human gastric cancer tissue. Antigen Retrieval: Heat mediation was performed in Citrate buffer (pH 6.0, epitope retrieval solution) for 20 min. The tissue section was blocked with 10% goat serum. The tissue section was then stained with ARG42196 anti-PHF21A / BHC80 antibody at 1 µg/ml dilution, overnight at 4°C.



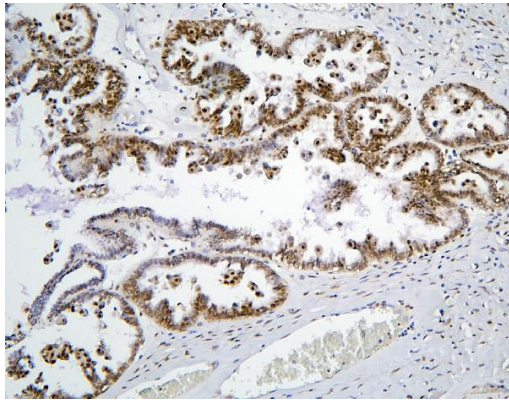
ARG42196 anti-PHF21A / BHC80 antibody IHC-P image

Immunohistochemistry: Paraffin-embedded Human intestinal cancer tissue. Antigen Retrieval: Heat mediation was performed in Citrate buffer (pH 6.0, epitope retrieval solution) for 20 min. The tissue section was blocked with 10% goat serum. The tissue section was then stained with ARG42196 anti-PHF21A / BHC80 antibody at 1 µg/ml dilution, overnight at 4°C.



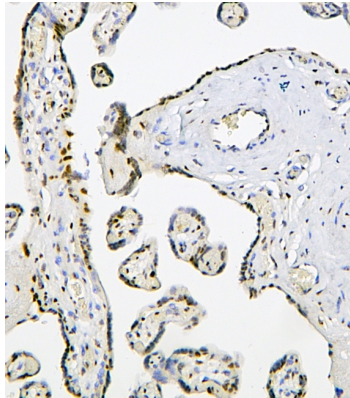
ARG42196 anti-PHF21A / BHC80 antibody IHC-P image

Immunohistochemistry: Paraffin-embedded Human lung cancer tissue. Antigen Retrieval: Heat mediation was performed in Citrate buffer (pH 6.0, epitope retrieval solution) for 20 min. The tissue section was blocked with 10% goat serum. The tissue section was then stained with ARG42196 anti-PHF21A / BHC80 antibody at 1 µg/ml dilution, overnight at 4°C.



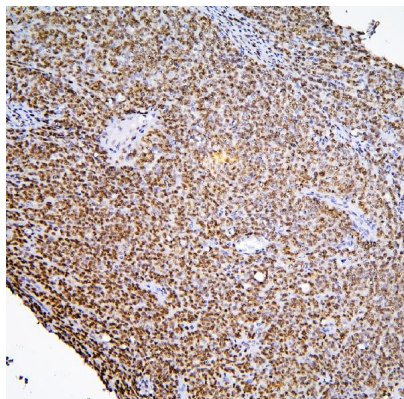
ARG42196 anti-PHF21A / BHC80 antibody IHC-P image

Immunohistochemistry: Paraffin-embedded Human ovarian cancer tissue. Antigen Retrieval: Heat mediation was performed in Citrate buffer (pH 6.0, epitope retrieval solution) for 20 min. The tissue section was blocked with 10% goat serum. The tissue section was then stained with ARG42196 anti-PHF21A / BHC80 antibody at 1 µg/ml dilution, overnight at 4°C.



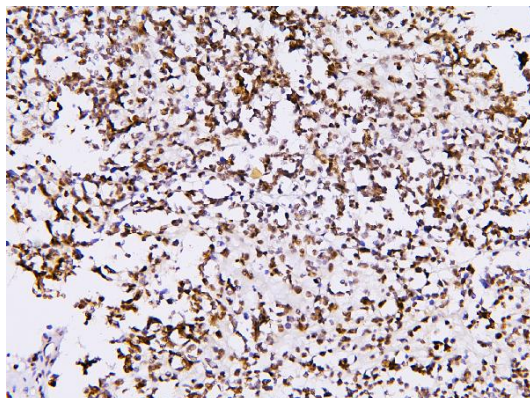
ARG42196 anti-PHF21A / BHC80 antibody IHC-P image

Immunohistochemistry: Paraffin-embedded Human placenta tissue. Antigen Retrieval: Heat mediation was performed in Citrate buffer (pH 6.0, epitope retrieval solution) for 20 min. The tissue section was blocked with 10% goat serum. The tissue section was then stained with ARG42196 anti-PHF21A / BHC80 antibody at 1 µg/ml dilution, overnight at 4°C.



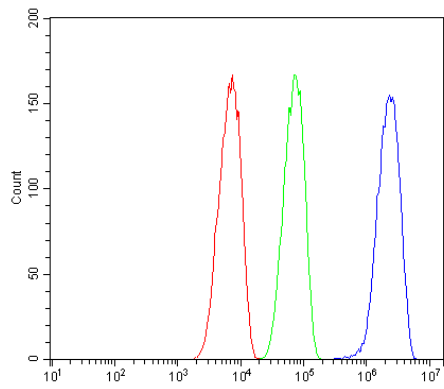
ARG42196 anti-PHF21A / BHC80 antibody IHC-P image

Immunohistochemistry: Paraffin-embedded Human sarcoma tissue. Antigen Retrieval: Heat mediation was performed in Citrate buffer (pH 6.0, epitope retrieval solution) for 20 min. The tissue section was blocked with 10% goat serum. The tissue section was then stained with ARG42196 anti-PHF21A / BHC80 antibody at 1 µg/ml dilution, overnight at 4°C.



ARG42196 anti-PHF21A / BHC80 antibody IHC-P image

Immunohistochemistry: Paraffin-embedded Human glioma tissue. Antigen Retrieval: Heat mediation was performed in Citrate buffer (pH 6.0, epitope retrieval solution) for 20 min. The tissue section was blocked with 10% goat serum. The tissue section was then stained with ARG42196 anti-PHF21A / BHC80 antibody at 1 µg/ml dilution, overnight at 4°C.



ARG42196 anti-PHF21A / BHC80 antibody FACS image

Flow Cytometry: SiHa cells were blocked with 10% normal goat serum and then stained with ARG42196 anti-PHF21A / BHC80 antibody (blue line) at 1 µg/10⁶ cells for 30 min at 20°C, followed by incubation with DyLight®488 labelled secondary antibody. Isotype control antibody (green line) was Rabbit IgG (1 µg/10⁶ cells) used under the same conditions. Unlabelled sample (red line) was also used as a control.