

## ARG42193 anti-HLA A antibody

Package: 50 µg  
Store at: -20°C

### Summary

|                     |  |
|---------------------|--|
| Product Description | Rabbit Polyclonal antibody recognizes HLA A  |
| Tested Reactivity   | Hu   |
| Tested Application  | ICC/IF, IHC-P, WB  |
| Host                | Rabbit   |
| Clonality           | Polyclonal   |
| Isotype             | IgG  |
| Target Name         | HLA A  |
| Species             | Human  |
| Immunogen           | Synthetic peptide corresponding to aa. 82-106 of Human HLA A. (EYWDGETRKKVKAHSQTHRVDLGTLR) |
| Conjugation         | Un-conjugated  |
| Alternate Names     | MHC class I antigen A*1; HLAA; HLA class I histocompatibility antigen, A-1 alpha chain     |

### Application Instructions

| Application table | Application  | Dilution       |
|-------------------|--|----------------|
|                   | ICC/IF   | 1:200 - 1:1000 |
|                   | IHC-P  | 1:200 - 1:1000 |
|                   | WB   | 1:500 - 1:2000 |
| Application Note  | * The dilutions indicate recommended starting dilutions and the optimal dilutions or concentrations should be determined by the scientist. |                |
| Positive Control  | U87 and HepG2  |                |
| Observed Size     | ~ 41 kDa   |                |

### Properties

|                     |  |
|---------------------|--|
| Form                | Liquid   |
| Purification        | Affinity purification with immunogen.  |
| Buffer              | 0.2% Na2HPO4, 0.9% NaCl, 0.05% Sodium azide and 5% BSA.  |
| Preservative        | 0.05% Sodium azide   |
| Stabilizer          | 5% BSA   |
| Concentration       | 0.5 mg/ml  |
| Storage instruction | For continuous use, store undiluted antibody at 2-8°C for up to a week. For long-term storage, aliquot and store at -20°C or below. Storage in frost free freezers is not recommended. Avoid repeated freeze/thaw cycles. Suggest spin the vial prior to opening. The antibody solution should be gently mixed |

before use.

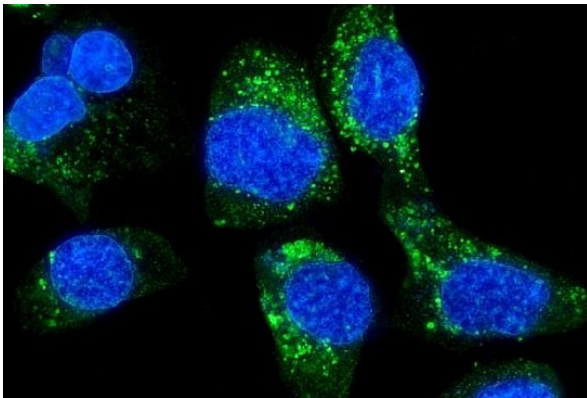
Note

For laboratory research only, not for drug, diagnostic or other use.

## Bioinformation

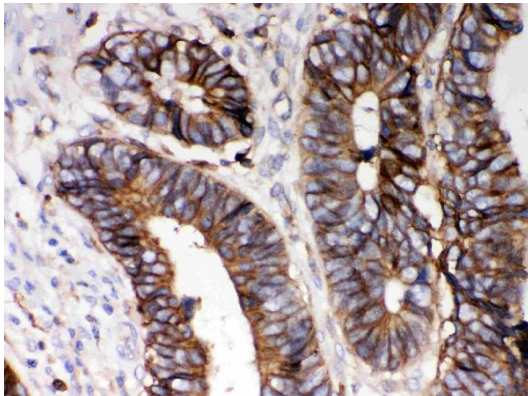
|                       |   |
|-----------------------|---|
| Gene Symbol           | HLA-A   |
| Gene Full Name        | major histocompatibility complex, class I, A  |
| Calculated Mw         | 41 kDa  |
| PTM                   | Polyubiquitinated in a post ER compartment by interaction with human herpesvirus 8 MIR1 protein. This targets the protein for rapid degradation via the ubiquitin system (By similarity). [UniProt] |
| Cellular Localization | Membrane; Single-pass type I membrane protein. [UniProt]  |

## Images



ARG42193 anti-HLA A antibody ICC/IF image

Immunofluorescence: A431 cells were blocked with 10% goat serum and then stained with ARG42193 anti-HLA A antibody (green) at 5 µg/ml dilution, overnight at 4°C. DAPI (blue) for nuclear staining.



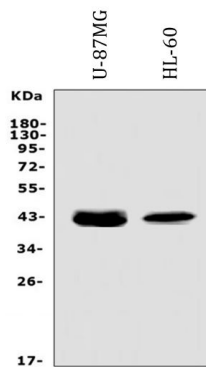
ARG42193 anti-HLA A antibody IHC-P image

Immunohistochemistry: Paraffin-embedded Human intestinal cancer tissue stained with ARG42193 anti-HLA A antibody.



ARG42193 anti-HLA A antibody WB image

Western blot: 40 µg of U87 and HepG2 whole cell lysates stained with ARG42193 anti-HLA A antibody at 0.5 µg/ml dilution.



ARG42193 anti-HLA A antibody WB image

Western blot: 50 µg of sample under reducing conditions. U-87MG and HL-60 whole cell lysates stained with ARG42193 anti-HLA A antibody at 0.5 µg/ml dilution, overnight at 4°C.