

ARG42124 anti-eEF1E1 / AIMP3 antibody [1494CT639.147.31]

Package: 100 µl
Store at: -20°C

Summary

Product Description	Mouse Monoclonal antibody recognizes eEF1E1 / AIMP3
Tested Reactivity	Hu, Ms
Tested Application	FACS, ICC/IF, WB
Host	Mouse
Clonality	Monoclonal
Clone	1494CT639.147.31
Isotype	IgG2b, kappa
Target Name	eEF1E1 / AIMP3
Species	Human
Immunogen	Recombinant protein of Human eEF1E1 / AIMP3.
Conjugation	Un-conjugated
Alternate Names	Eukaryotic translation elongation factor 1 epsilon-1; Elongation factor p18; AIMP3; P18; Multisynthase complex auxiliary component p18; Aminoacyl tRNA synthetase complex-interacting multifunctional protein 3

Application Instructions

Application table	Application	Dilution
	FACS	1:25
	ICC/IF	1:25
	WB	1:2000 - 1:4000
Application Note	* The dilutions indicate recommended starting dilutions and the optimal dilutions or concentrations should be determined by the scientist.	
Positive Control	HepG2	
Observed Size	~ 18 kDa	

Properties

Form	Liquid
Purification	Purification with Protein G.
Buffer	PBS and 0.09% (W/V) Sodium azide.
Preservative	0.09% (W/V) Sodium azide
Storage instruction	For continuous use, store undiluted antibody at 2-8°C for up to a week. For long-term storage, aliquot and store at -20°C or below. Storage in frost free freezers is not recommended. Avoid repeated freeze/thaw cycles. Suggest spin the vial prior to opening. The antibody solution should be gently mixed

before use.

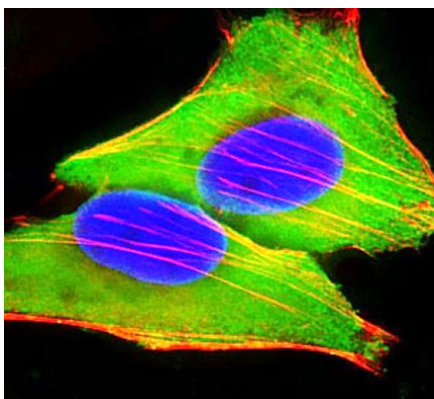
Note

For laboratory research only, not for drug, diagnostic or other use.

Bioinformation

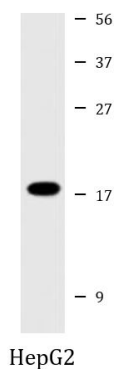
Gene Symbol	EEF1E1
Gene Full Name	eukaryotic translation elongation factor 1 epsilon 1
Background	This gene encodes a multifunctional protein that localizes to both the cytoplasm and nucleus. In the cytoplasm, the encoded protein is an auxiliary component of the macromolecular aminoacyl-tRNA synthase complex. However, its mouse homolog has been shown to translocate to the nucleus in response to DNA damage, and it plays a positive role in ATM/ATR-mediated p53 activation. Alternative splicing results in multiple transcript variants. Read-through transcription also exists between this gene and the neighboring downstream MUTED (muted homolog) gene. An EEF1E1-related pseudogene has been identified on chromosome 2. [provided by RefSeq, Dec 2010]
Function	Positive modulator of ATM response to DNA damage. [UniProt]
Calculated Mw	20 kDa
Cellular Localization	Cytoplasm. Cytoplasm, cytosol. Nucleus. Note=Cytoplasmic under growth arrest conditions. Translocated into the nucleus when growth resumes (S phase) and following DNA damage. [UniProt]

Images



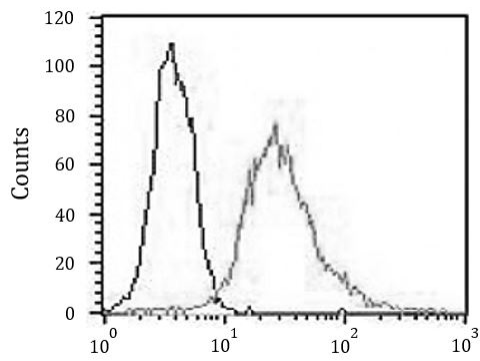
ARG42124 anti-eEF1E1 / AIMP3 antibody ICC/IF image

Immunofluorescence: 4% Paraformaldehyde-fixed, 0.1% Triton X-100 permeabilized HeLa cells stained with ARG42124 anti-eEF1E1 / AIMP3 antibody (green) at 1:25 dilution. Dylight® 554 Phalloidin (red) for cytoplasmic actin staining. DAPI (blue) for nuclear staining.



ARG42124 anti-eEF1E1 / AIMP3 antibody WB image

Western blot: 20 µg of HepG2 whole cell lysate stained with ARG42124 anti-eEF1E1 / AIMP3 antibody at 1:2000 - 1:4000 dilution.



ARG42124 anti-eEF1E1 / AIMP3 antibody FACS image

Flow Cytometry: HeLa cells were fixed with 2% paraformaldehyde (10 min) and then permeabilized with 90% methanol for 10 min. The cells were then incubated in 2% BSA to block non-specific protein-protein interactions followed by ARG42124 anti-eEF1E1 / AIMP3 antibody (right histogram) at 1:25 dilution for 60 min at 37°C, followed by incubation with DyLight®488 labelled secondary antibody. Isotype control antibody (left histogram) was Mouse IgG2b (1 µg/10⁶ cells) used under the same conditions. Acquisition of > 10000 events was performed.