

ARG42122 anti-eEF1E1 / AIMP3 antibody

Package: 100 µl
Store at: -20°C

Summary

Product Description	Rabbit Polyclonal antibody recognizes eEF1E1 / AIMP3
Tested Reactivity	Hu, Ms, Rat
Tested Application	ICC/IF, WB
Host	Rabbit
Clonality	Polyclonal
Isotype	IgG
Target Name	eEF1E1 / AIMP3
Species	Human
Immunogen	Synthetic peptide within aa. 1-100 of Human eEF1E1 / AIMP3 (NP_004271.1).
Conjugation	Un-conjugated
Alternate Names	Eukaryotic translation elongation factor 1 epsilon-1; Elongation factor p18; AIMP3; P18; Multisynthase complex auxiliary component p18; Aminoacyl tRNA synthetase complex-interacting multifunctional protein 3

Application Instructions

Application table	Application	Dilution
	ICC/IF	1:50 - 1:200
	WB	1:200 - 1:2000
Application Note	* The dilutions indicate recommended starting dilutions and the optimal dilutions or concentrations should be determined by the scientist.	
Positive Control	293T	
Observed Size	~ 22 kDa	

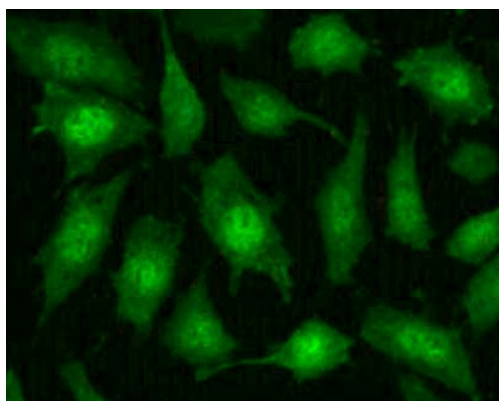
Properties

Form	Liquid
Purification	Affinity purified.
Buffer	PBS (pH 7.3), 0.02% Sodium azide and 50% Glycerol.
Preservative	0.02% Sodium azide
Stabilizer	50% Glycerol
Storage instruction	For continuous use, store undiluted antibody at 2-8°C for up to a week. For long-term storage, aliquot and store at -20°C. Storage in frost free freezers is not recommended. Avoid repeated freeze/thaw cycles. Suggest spin the vial prior to opening. The antibody solution should be gently mixed before use.

Bioinformation

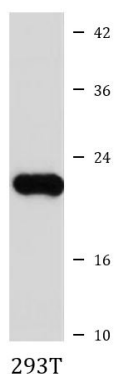
Gene Symbol	EEF1E1
Gene Full Name	eukaryotic translation elongation factor 1 epsilon 1
Background	This gene encodes a multifunctional protein that localizes to both the cytoplasm and nucleus. In the cytoplasm, the encoded protein is an auxiliary component of the macromolecular aminoacyl-tRNA synthase complex. However, its mouse homolog has been shown to translocate to the nucleus in response to DNA damage, and it plays a positive role in ATM/ATR-mediated p53 activation. Alternative splicing results in multiple transcript variants. Read-through transcription also exists between this gene and the neighboring downstream MUTED (muted homolog) gene. An EEF1E1-related pseudogene has been identified on chromosome 2. [provided by RefSeq, Dec 2010]
Function	Positive modulator of ATM response to DNA damage. [UniProt]
Calculated Mw	20 kDa
Cellular Localization	Cytoplasm. Cytoplasm, cytosol. Nucleus. Note=Cytoplasmic under growth arrest conditions. Translocated into the nucleus when growth resumes (S phase) and following DNA damage. [UniProt]

Images



ARG42122 anti-eEF1E1 / AIMP3 antibody ICC/IF image

Immunofluorescence: L929 cells stained with ARG42122 anti-eEF1E1 / AIMP3 antibody at 1:100 dilution.



ARG42122 anti-eEF1E1 / AIMP3 antibody WB image

Western blot: 25 µg of 293T cell lysate stained with ARG42122 anti-eEF1E1 / AIMP3 antibody at 1:1000 dilution.