

## ARG42101 anti-CNTN1 / Contactin 1 antibody

Package: 50 µg  
Store at: -20°C

### Summary

Product Description	Goat Polyclonal antibody recognizes CNTN1 / Contactin 1
Tested Reactivity	Hu, Ms, Rat
Predict Reactivity	Dog, Pig
Tested Application	IHC-P, WB
Host	Goat
Clonality	Polyclonal
Isotype	IgG
Target Name	CNTN1 / Contactin 1
Species	Human
Immunogen	Synthetic peptide around the internal region of Human CNTN1 / Contactin 1. (C-QVTSQEYSARLEN) (NP_001834.2; NP_778203.1)
Conjugation	Un-conjugated
Alternate Names	Contactin-1; F3; Glycoprotein gp135; GP135; Neural cell surface protein F3; MYPCN

### Application Instructions

Application table	Application	Dilution
	IHC-P	5 µg/ml
	WB	0.3 - 1 µg/ml
Application Note	IHC-P: Antigen Retrieval: Steam tissue section in Citrate buffer (pH 6.0). WB: Recommend incubate at RT for 1h. * The dilutions indicate recommended starting dilutions and the optimal dilutions or concentrations should be determined by the scientist.	
Observed Size	140 - 150 kDa (glycosylated)	

### Properties

Form	Liquid
Purification	Affinity purified
Buffer	Tris saline (pH 7.3), 0.02% Sodium azide and 0.5% BSA.
Preservative	0.02% Sodium azide
Stabilizer	0.5% BSA
Concentration	0.5 mg/ml
Storage instruction	For continuous use, store undiluted antibody at 2-8°C for up to a week. For long-term storage, aliquot and store at -20°C or below. Storage in frost free freezers is not recommended. Avoid repeated

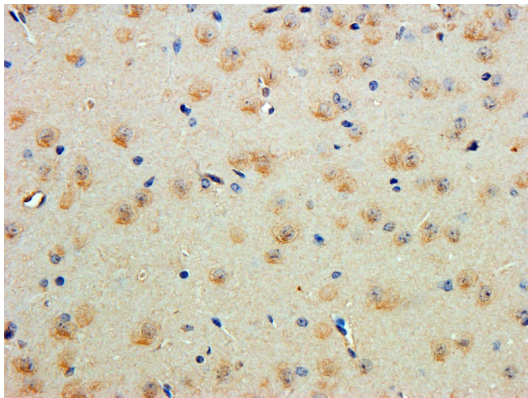
freeze/thaw cycles. Suggest spin the vial prior to opening. The antibody solution should be gently mixed before use.

**Note** For laboratory research only, not for drug, diagnostic or other use.

## Bioinformation

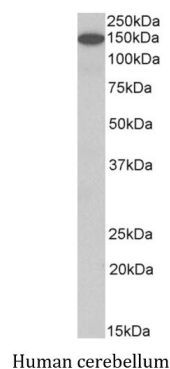
Gene Symbol	CNTN1
Gene Full Name	contactin 1
Background	The protein encoded by this gene is a member of the immunoglobulin superfamily. It is a glycosylphosphatidylinositol (GPI)-anchored neuronal membrane protein that functions as a cell adhesion molecule. It may play a role in the formation of axon connections in the developing nervous system. Multiple alternatively spliced transcript variants encoding different isoforms have been found for this gene. [provided by RefSeq, Dec 2011]
Function	Contactins mediate cell surface interactions during nervous system development. Involved in the formation of paranodal axo-glial junctions in myelinated peripheral nerves and in the signaling between axons and myelinating glial cells via its association with CNTNAP1. Participates in oligodendrocytes generation by acting as a ligand of NOTCH1. Its association with NOTCH1 promotes NOTCH1 activation through the released notch intracellular domain (NICD) and subsequent translocation to the nucleus. Interaction with TNR induces a repulsion of neurons and an inhibition of neurite outgrowth (By similarity). [UniProt]
Calculated Mw	113 kDa
Cellular Localization	Isoform 1: Cell membrane; Lipid-anchor, GPI-anchor; Extracellular side. Isoform 2: Cell membrane; Lipid-anchor, GPI-anchor; Extracellular side. [UniProt]

## Images



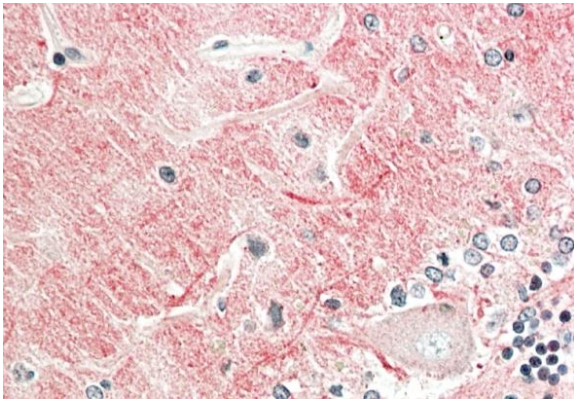
ARG42101 anti-CNTN1 / Contactin 1 antibody IHC-P image

Immunohistochemistry: Paraffin-embedded Mouse cerebral cortex tissue. Antigen Retrieval: Steam tissue section in Citrate buffer (pH 6.0). The tissue section was stained with ARG42101 anti-CNTN1 / Contactin 1 antibody at 5 µg/ml dilution followed by DAB-staining.



ARG42101 anti-CNTN1 / Contactin 1 antibody WB image

Western blot: 35 µg of Human cerebellum lysate (in RIPA buffer) stained with ARG42101 anti-CNTN1 / Contactin 1 antibody at 1 µg/ml dilution and incubated at RT for 1 hour.



ARG42101 anti-CNTN1 / Contactin 1 antibody IHC-P image

Immunohistochemistry: Paraffin-embedded Human cerebellum tissue. Antigen Retrieval: Steam tissue section in Citrate buffer (pH 6.0). The tissue section was stained with ARG42101 anti-CNTN1 / Contactin 1 antibody at 5 µg/ml dilution followed by AP-staining.



ARG42101 anti-CNTN1 / Contactin 1 antibody WB image

Western blot: 35 µg of Mouse brain and Rat brain lysates (in RIPA buffer) stained with ARG42101 anti-CNTN1 / Contactin 1 antibody at 1 µg/ml dilution and incubated at RT for 1 hour.