

ARG42021 anti-Prox 1 antibody

Package: 100 µl
Store at: -20°C

Summary

Product Description	Rabbit Polyclonal antibody recognizes Prox 1
Tested Reactivity	Hu
Tested Application	WB
Host	Rabbit
Clonality	Polyclonal
Isotype	IgG
Target Name	Prox 1
Species	Human
Immunogen	KLH-conjugated synthetic peptide between aa. 444-478 of Human Prox 1.
Conjugation	Un-conjugated
Alternate Names	Prospero homeobox protein 1; Homeobox prospero-like protein PROX1; PROX-1

Application Instructions

Application table	Application	Dilution
	WB	1:2000
Application Note	* The dilutions indicate recommended starting dilutions and the optimal dilutions or concentrations should be determined by the scientist.	
Positive Control	Human heart	
Observed Size	~ 92 kDa	

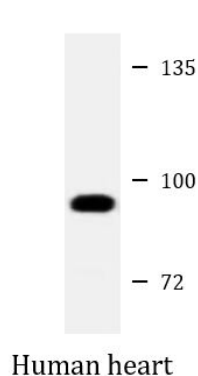
Properties

Form	Liquid
Purification	Purification with Protein A and immunogen peptide.
Buffer	PBS and 0.09% (W/V) Sodium azide.
Preservative	0.09% (W/V) Sodium azide
Storage instruction	For continuous use, store undiluted antibody at 2-8°C for up to a week. For long-term storage, aliquot and store at -20°C or below. Storage in frost free freezers is not recommended. Avoid repeated freeze/thaw cycles. Suggest spin the vial prior to opening. The antibody solution should be gently mixed before use.
Note	For laboratory research only, not for drug, diagnostic or other use.

Bioinformation

Gene Symbol	PROX1
Gene Full Name	prospero homeobox 1
Background	The protein encoded by this gene is a member of the homeobox transcription factor family. Members of this family contain a homeobox domain that consists of a 60-amino acid helix-turn-helix structure that binds DNA and RNA. The protein encoded by this gene is conserved across vertebrates and may play an essential role during development. Altered levels of this protein have been reported in cancers of different organs, such as colon, brain, blood, breast, pancreas, liver and esophagus. Alternative splicing results in multiple transcript variants. [provided by RefSeq, Jul 2012]
Function	Transcription factor involved in developmental processes such as cell fate determination, gene transcriptional regulation and progenitor cell regulation in a number of organs. Plays a critical role in embryonic development and functions as a key regulatory protein in neurogenesis and the development of the heart, eye lens, liver, pancreas and the lymphatic system. Involved in the regulation of the circadian rhythm. Represses: transcription of the retinoid-related orphan receptor RORγ, transcriptional activator activity of RORα and RORγ and the expression of RORα/G-target genes including core clock components: ARNTL/BMAL1, NPAS2 and CRY1 and metabolic genes: AVPR1A and ELOVL3. [UniProt]
Research Area	Cell Biology and Cellular Response antibody; Gene Regulation antibody; Neuroscience antibody; Hippocampal Neurogenesis Marker antibody; Intermediate Progenitor Cells Marker antibody
Calculated Mw	83 kDa
Cellular Localization	Nucleus. Note=RORγ promotes its nuclear localization. [UniProt]

Images



ARG42021 anti-Prox 1 antibody WB image

Western blot: 20 µg of Human heart lysate stained with ARG42021 anti-Prox 1 antibody at 1:1000 dilution.