

## ARG42012 anti-NEDD4L / NEDD4-2 antibody

Package: 100 µl  
Store at: -20°C

### Summary

Product Description	Rabbit Polyclonal antibody recognizes NEDD4L / NEDD4-2
Tested Reactivity	Hu, Ms, Rat
Tested Application	ICC/IF, IHC-P, WB
Host	Rabbit
Clonality	Polyclonal
Isotype	IgG
Target Name	NEDD4L / NEDD4-2
Species	Human
Immunogen	Recombinant fusion protein corresponding to aa. 836-955 of Human NEDD4L / NEDD4-2 (NP_056092.2).
Conjugation	Un-conjugated
Alternate Names	hNEDD4-2; EC 6.3.2.-; NEDD4.2; Nedd4-2; RSP5; E3 ubiquitin-protein ligase NEDD4-like; NEDD4-2

### Application Instructions

Application table	Application	Dilution
	ICC/IF	1:50 - 1:200
	IHC-P	1:50 - 1:200
	WB	1:500 - 1:2000
Application Note	* The dilutions indicate recommended starting dilutions and the optimal dilutions or concentrations should be determined by the scientist.	
Positive Control	Mouse brain	
Observed Size	~ 115 kDa	

### Properties

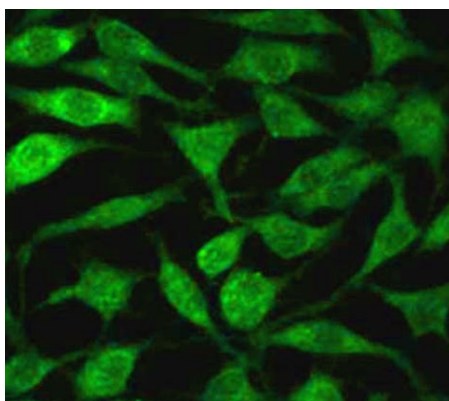
Form	Liquid
Purification	Affinity purified.
Buffer	PBS (pH 7.3), 0.02% Sodium azide and 50% Glycerol.
Preservative	0.02% Sodium azide
Stabilizer	50% Glycerol
Storage instruction	For continuous use, store undiluted antibody at 2-8°C for up to a week. For long-term storage, aliquot and store at -20°C. Storage in frost free freezers is not recommended. Avoid repeated freeze/thaw cycles. Suggest spin the vial prior to opening. The antibody solution should be gently mixed before use.

Note For laboratory research only, not for drug, diagnostic or other use.

## Bioinformation

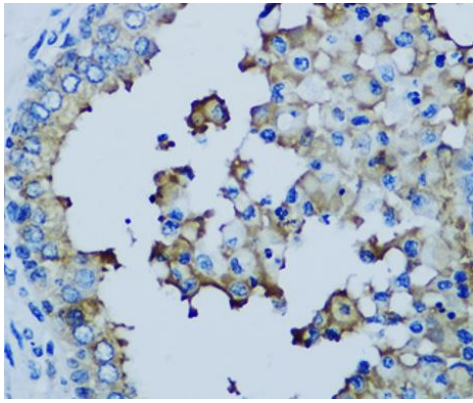
Gene Symbol	NEDD4L
Gene Full Name	neural precursor cell expressed, developmentally down-regulated 4-like, E3 ubiquitin protein ligase
Background	This gene encodes a member of the Nedd4 family of HECT domain E3 ubiquitin ligases. HECT domain E3 ubiquitin ligases transfer ubiquitin from E2 ubiquitin-conjugating enzymes to protein substrates, thus targeting specific proteins for lysosomal degradation. The encoded protein mediates the ubiquitination of multiple target substrates and plays a critical role in epithelial sodium transport by regulating the cell surface expression of the epithelial sodium channel, ENaC. Single nucleotide polymorphisms in this gene may be associated with essential hypertension. Alternatively spliced transcript variants encoding multiple isoforms have been observed for this gene. [provided by RefSeq, Mar 2012]
Function	E3 ubiquitin-protein ligase which accepts ubiquitin from an E2 ubiquitin-conjugating enzyme in the form of a thioester and then directly transfers the ubiquitin to targeted substrates. Inhibits TGF-beta signaling by triggering SMAD2 and TGFBR1 ubiquitination and proteasome-dependent degradation. Promotes ubiquitination and internalization of various plasma membrane channels such as ENaC, Nav1.2, Nav1.3, Nav1.5, Nav1.7, Nav1.8, Kv1.3, EAAT1 or CLC5. Promotes ubiquitination and degradation of SGK1 and TNK2. Ubiquitinates BRAT1 and this ubiquitination is enhanced in the presence of NDFIP1. [UniProt]
Calculated Mw	112 kDa
PTM	Phosphorylated by SGK1 or PKA; which impairs interaction with SCNN. Interaction with YWHAH inhibits dephosphorylation.  Auto-ubiquitinated. [UniProt]
Cellular Localization	Cytoplasm. Golgi apparatus. Endosome, multivesicular body. Note=May be recruited to exosomes by NDFIP1. [UniProt]

## Images



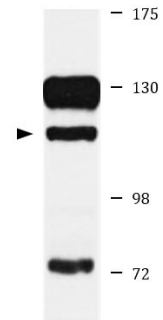
ARG42012 anti-NEDD4L / NEDD4-2 antibody ICC/IF image

Immunofluorescence: L929 cells stained with ARG42012 anti-NEDD4L / NEDD4-2 antibody 1:100 dilution.



ARG42012 anti-NEDD4L / NEDD4-2 antibody IHC-P image

Immunohistochemistry: Paraffin-embedded Human prostate tissue stained with ARG42012 anti-NEDD4L / NEDD4-2 antibody at 1:200 dilution.



Mouse brain

ARG42012 anti-NEDD4L / NEDD4-2 antibody WB image

Western blot: 25 µg of Mouse brain lysate stained with ARG42012 anti-NEDD4L / NEDD4-2 antibody at 1:1000 dilution.