

ARG42010 anti-KIFC1 antibody

Package: 100 µl
Store at: -20°C

Summary

Product Description	Rabbit Polyclonal antibody recognizes KIFC1
Tested Reactivity	Hu, Ms, Rat
Tested Application	ICC/IF, IHC-P, WB
Host	Rabbit
Clonality	Polyclonal
Isotype	IgG
Target Name	KIFC1
Species	Human
Immunogen	Recombinant fusion protein corresponding to aa. 1-250 of Human KIFC1 (NP_002254.2).
Conjugation	Un-conjugated
Alternate Names	Kinesin-like protein 2; Kinesin-like protein KIFC1; Kinesin-related protein HSET; HSET; KNSL2

Application Instructions

Application table	Application	Dilution
	ICC/IF	1:50 - 1:200
	IHC-P	1:50 - 1:200
	WB	1:500 - 1:2000
Application Note	* The dilutions indicate recommended starting dilutions and the optimal dilutions or concentrations should be determined by the scientist.	
Positive Control	Jurkat	
Observed Size	~ 73 kDa	

Properties

Form	Liquid
Purification	Affinity purified.
Buffer	PBS (pH 7.3), 0.02% Sodium azide and 50% Glycerol.
Preservative	0.02% Sodium azide
Stabilizer	50% Glycerol
Storage instruction	For continuous use, store undiluted antibody at 2-8°C for up to a week. For long-term storage, aliquot and store at -20°C. Storage in frost free freezers is not recommended. Avoid repeated freeze/thaw cycles. Suggest spin the vial prior to opening. The antibody solution should be gently mixed before use.

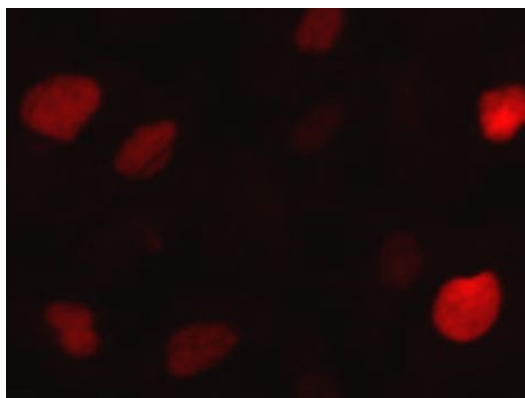
Note

For laboratory research only, not for drug, diagnostic or other use.

Bioinformation

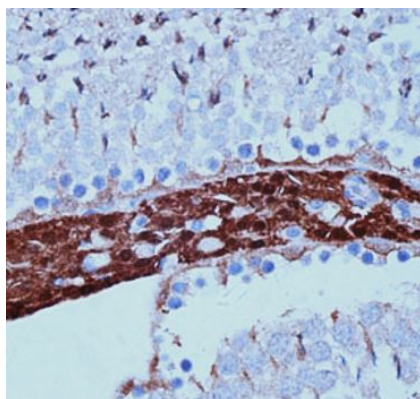
Gene Symbol	KIFC1
Gene Full Name	kinesin family member C1
Function	Minus end-directed microtubule-dependent motor required for bipolar spindle formation. May contribute to movement of early endocytic vesicles. [UniProt]
Calculated Mw	74 kDa
Cellular Localization	Nucleus. Cytoplasm, cytoskeleton, microtubule organizing center, centrosome. Cytoplasm, cytoskeleton, spindle. Early endosome. Note=Associated with nucleus during interphase, centrosomes in early and spindle in later mitosis. [UniProt]

Images



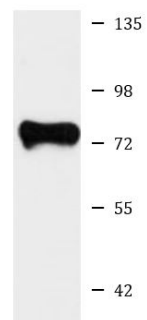
ARG42010 anti-KIFC1 antibody ICC/IF image

Immunofluorescence: U2OS cells stained with ARG42010 anti-KIFC1 antibody at 1:100 dilution.



ARG42010 anti-KIFC1 antibody IHC-P image

Immunohistochemistry: Paraffin-embedded Rat testis tissue stained with ARG42010 anti-KIFC1 antibody at 1:100 dilution.



Jurkat

ARG42010 anti-KIFC1 antibody WB image

Western blot: 25 µg of Jurkat cell lysate stained with ARG42010 anti-KIFC1 antibody at 1:3000 dilution.