

ARG41968 anti-SMN / Gemin1 antibody [2B10]

Package: 50 µg
Store at: -20°C

Summary

Product Description	Mouse Monoclonal antibody [2B10] recognizes SMN / Gemin1
Tested Reactivity	Hu, Ms, Rat
Tested Application	ICC/IF, IHC-P, WB
Host	Mouse
Clonality	Monoclonal
Clone	2B10
Isotype	IgG1
Target Name	SMN / Gemin1
Species	Human
Immunogen	Synthetic peptide corresponding to aa. 22-52 of Human SMN / Gemin1. (RRGTGQSDSDIWDDTALIKAYDKAVASFKH)
Conjugation	Un-conjugated
Alternate Names	SMA3; SMA2; SMA1; Component of gems 1; SMNT; SMA4; GEMIN1; Survival motor neuron protein; BCD541; SMN; SMA@; T-BCD541; TDRD16A; SMA; Gemin-1

Application Instructions

Application table	Application	Dilution
	ICC/IF	1:200 - 1:1000
	IHC-P	1:200 - 1:1000
	WB	1:500 - 1:2000
Application Note	IHC-P: Antigen Retrieval: Heat mediation was performed in Citrate buffer (pH 6.0, epitope retrieval solution) for 20 min. * The dilutions indicate recommended starting dilutions and the optimal dilutions or concentrations should be determined by the scientist.	
Observed Size	~ 38 kDa	

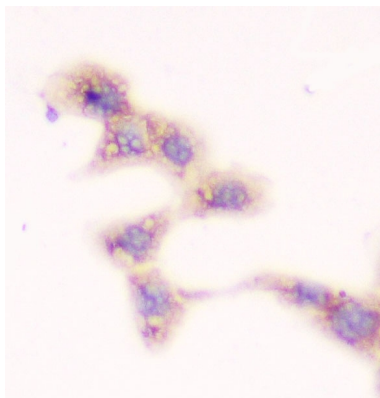
Properties

Form	Liquid
Purification	Affinity purification with immunogen.
Buffer	0.2% Na ₂ HPO ₄ , 0.9% NaCl, 0.05% Sodium azide and 4% Trehalose.
Preservative	0.05% Sodium azide
Stabilizer	4% Trehalose

Concentration	0.5 mg/ml
Storage instruction	For continuous use, store undiluted antibody at 2-8°C for up to a week. For long-term storage, aliquot and store at -20°C or below. Storage in frost free freezers is not recommended. Avoid repeated freeze/thaw cycles. Suggest spin the vial prior to opening. The antibody solution should be gently mixed before use.
Note	For laboratory research only, not for drug, diagnostic or other use.

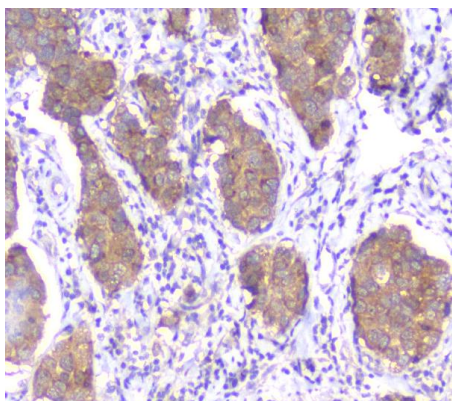
Bioinformation

Gene Symbol	SMN1
Gene Full Name	survival of motor neuron 1, telomeric
Background	<p>This gene is part of a 500 kb inverted duplication on chromosome 5q13. This duplicated region contains at least four genes and repetitive elements which make it prone to rearrangements and deletions. The repetitiveness and complexity of the sequence have also caused difficulty in determining the organization of this genomic region. The telomeric and centromeric copies of this gene are nearly identical and encode the same protein. However, mutations in this gene, the telomeric copy, are associated with spinal muscular atrophy; mutations in the centromeric copy do not lead to disease. The centromeric copy may be a modifier of disease caused by mutation in the telomeric copy. The critical sequence difference between the two genes is a single nucleotide in exon 7, which is thought to be an exon splice enhancer. Note that the nine exons of both the telomeric and centromeric copies are designated historically as exon 1, 2a, 2b, and 3-8. It is thought that gene conversion events may involve the two genes, leading to varying copy numbers of each gene. The protein encoded by this gene localizes to both the cytoplasm and the nucleus. Within the nucleus, the protein localizes to subnuclear bodies called gems which are found near coiled bodies containing high concentrations of small ribonucleoproteins (snRNPs). This protein forms heteromeric complexes with proteins such as SIP1 and GEMIN4, and also interacts with several proteins known to be involved in the biogenesis of snRNPs, such as hnRNP U protein and the small nucleolar RNA binding protein. Multiple transcript variants encoding distinct isoforms have been described. [provided by RefSeq, Jul 2014]</p>
Function	<p>The SMN complex plays a catalyst role in the assembly of small nuclear ribonucleoproteins (snRNPs), the building blocks of the spliceosome. Thereby, plays an important role in the splicing of cellular pre-mRNAs. Most spliceosomal snRNPs contain a common set of Sm proteins SNRNPB, SNRPD1, SNRPD2, SNRPD3, SNRPE, SNRPF and SNRPG that assemble in a heptameric protein ring on the Sm site of the small nuclear RNA to form the core snRNP. In the cytosol, the Sm proteins SNRPD1, SNRPD2, SNRPE, SNRPF and SNRPG are trapped in an inactive 6S pICln-Sm complex by the chaperone CLNS1A that controls the assembly of the core snRNP. Dissociation by the SMN complex of CLNS1A from the trapped Sm proteins and their transfer to an SMN-Sm complex triggers the assembly of core snRNPs and their transport to the nucleus. Ensures the correct splicing of U12 intron-containing genes that may be important for normal motor and proprioceptive neurons development. May also play a role in the metabolism of small nucleolar ribonucleoprotein (snoRNPs). [UniProt]</p>
Calculated Mw	32 kDa
Cellular Localization	<p>Nucleus, gem, Cajal body. Cytoplasm. Cytoplasmic granule. Perikaryon. Cell projection. Cytoplasm, myofibril, sarcomere, Z line. Note=Colocalizes with actin and at the Z-line of skeletal muscle. Under stress conditions colocalizes with RPP20/POP7 in punctuated cytoplasmic granules. Colocalized and redistributed with ZPR1 from the cytoplasm to nuclear gems (Gemini of coiled bodies) and Cajal bodies. Colocalizes with FMR1 in cytoplasmic granules in the soma and neurite cell processes. [UniProt]</p>



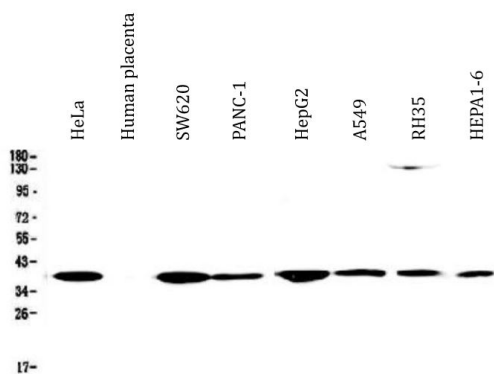
ARG41968 anti-SMN / Gemin1 antibody [2B10] ICC image

Immunocytochemistry: A431 cells were blocked with 10% goat serum and then stained with ARG41968 anti-SMN / Gemin1 antibody [2B10] at 1 µg/ml dilution, overnight at 4°C.



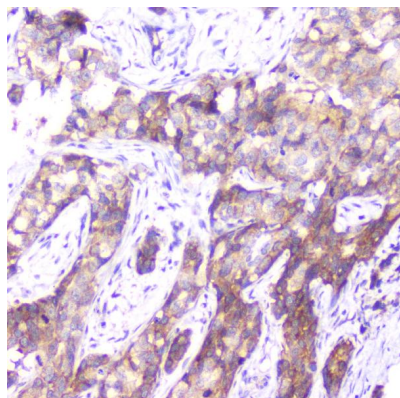
ARG41968 anti-SMN / Gemin1 antibody [2B10] IHC-P image

Immunohistochemistry: Paraffin-embedded Human mammary cancer tissue. Antigen Retrieval: Heat mediation was performed in Citrate buffer (pH 6.0, epitope retrieval solution) for 20 min. The tissue section was blocked with 10% goat serum. The tissue section was then stained with ARG41968 anti-SMN / Gemin1 antibody [2B10] at 1 µg/ml dilution, overnight at 4°C.



ARG41968 anti-SMN / Gemin1 antibody [2B10] WB image

Western blot: 50 µg of samples under reducing conditions. HeLa, Human placenta, SW620, PANC-1, HepG2, A549, RH35 and HEPA1-6 whole cell lysates stained with ARG41968 anti-SMN / Gemin1 antibody [2B10] at 0.5 µg/ml dilution, overnight at 4°C.



ARG41968 anti-SMN / Gemin1 antibody [2B10] IHC-P image

Immunohistochemistry: Paraffin-embedded Human mammary cancer tissue. Antigen Retrieval: Heat mediation was performed in Citrate buffer (pH 6.0, epitope retrieval solution) for 20 min. The tissue section was blocked with 10% goat serum. The tissue section was then stained with ARG41968 anti-SMN / Gemin1 antibody [2B10] at 1 µg/ml dilution, overnight at 4°C.