

## ARG41932 anti-CD66e / CEA antibody

Package: 100 µl  
Store at: -20°C

### Summary

Product Description	Rabbit Polyclonal antibody recognizes CD66e / CEA
Tested Reactivity	Hu
Tested Application	ICC/IF, IHC-P, WB
Host	Rabbit
Clonality	Polyclonal
Isotype	IgG
Target Name	CD66e / CEA
Species	Human
Immunogen	Synthetic peptide of Human CD66e / CEA.
Conjugation	Un-conjugated
Alternate Names	Carcinoembryonic antigen-related cell adhesion molecule 5; CEA; CD66e; CD antigen CD66e; Carcinoembryonic antigen; Meconium antigen 100

### Application Instructions

Application table	Application	Dilution
	ICC/IF	1:50 - 1:200
	IHC-P	1:50 - 1:200
	WB	1:500 - 1:2000
Application Note	* The dilutions indicate recommended starting dilutions and the optimal dilutions or concentrations should be determined by the scientist.	
Positive Control	Human colon cancer	

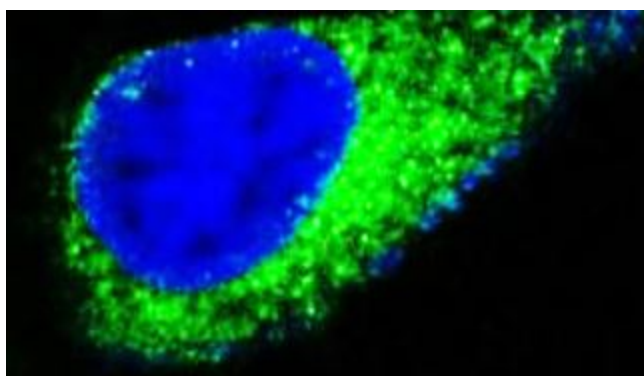
### Properties

Form	Liquid
Purification	Affinity purified.
Buffer	PBS (pH 7.4), 150 mM NaCl, 0.02% Sodium azide and 50% Glycerol.
Preservative	0.02% Sodium azide
Stabilizer	50% Glycerol
Storage instruction	For continuous use, store undiluted antibody at 2-8°C for up to a week. For long-term storage, aliquot and store at -20°C. Storage in frost free freezers is not recommended. Avoid repeated freeze/thaw cycles. Suggest spin the vial prior to opening. The antibody solution should be gently mixed before use.
Note	For laboratory research only, not for drug, diagnostic or other use.

## Bioinformation

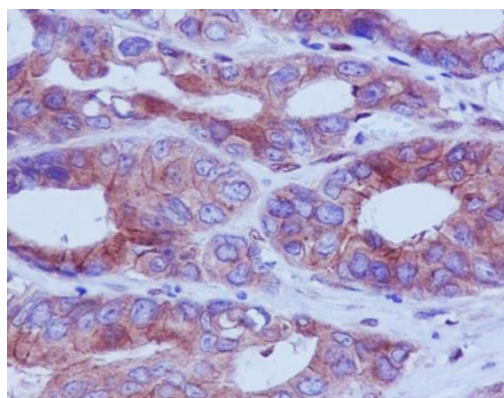
Gene Symbol	CEACAM5
Gene Full Name	carcinoembryonic antigen-related cell adhesion molecule 5
Background	This gene encodes a cell surface glycoprotein that represents the founding member of the carcinoembryonic antigen (CEA) family of proteins. The encoded protein is used as a clinical biomarker for gastrointestinal cancers and may promote tumor development through its role as a cell adhesion molecule. Additionally, the encoded protein may regulate differentiation, apoptosis, and cell polarity. This gene is present in a CEA family gene cluster on chromosome 19. Alternative splicing results in multiple transcript variants. [provided by RefSeq, Jul 2015]
Function	Cell surface glycoprotein that plays a role in cell adhesion and in intracellular signaling. Receptor for E.coli Dr adhesins. [UniProt]
Calculated Mw	77 kDa
PTM	Complex immunoreactive glycoprotein with a MW of 180 kDa comprising 60% carbohydrate. [UniProt]
Cellular Localization	Cell membrane; Lipid-anchor, GPI-anchor. [UniProt]

## Images



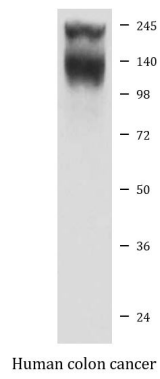
ARG41932 anti-CD66e / CEA antibody ICC/IF image

Immunofluorescence: MCF7 cells stained with ARG41932 anti-CD66e / CEA antibody.



ARG41932 anti-CD66e / CEA antibody IHC-P image

Immunohistochemistry: Paraffin-embedded Human colon carcinoma tissue stained with ARG41932 anti-CD66e / CEA antibody.



#### ARG41932 anti-CD66e / CEA antibody WB image

Western blot: Human colon cancer tissue lysate stained with ARG41932 anti-CD66e / CEA antibody.