

ARG41923 anti-CD66e / CEA antibody

Package: 50 µg
Store at: -20°C

Summary

Product Description	Rabbit Polyclonal antibody recognizes CD66e / CEA
Tested Reactivity	Hu, Ms, Rat
Tested Application	IHC-P
Host	Rabbit
Clonality	Polyclonal
Isotype	IgG
Target Name	CD66e / CEA
Species	Human
Immunogen	Recombinant protein corresponding to K35-N650 of Human CD66e / CEA.
Conjugation	Un-conjugated
Alternate Names	Carcinoembryonic antigen-related cell adhesion molecule 5; CEA; CD66e; CD antigen CD66e; Carcinoembryonic antigen; Meconium antigen 100

Application Instructions

Application table	Application	Dilution
	IHC-P	1:200 - 1:1000
Application Note	IHC-P: Antigen Retrieval: Heat mediation was performed in EDTA buffer (pH 8.0). * The dilutions indicate recommended starting dilutions and the optimal dilutions or concentrations should be determined by the scientist.	

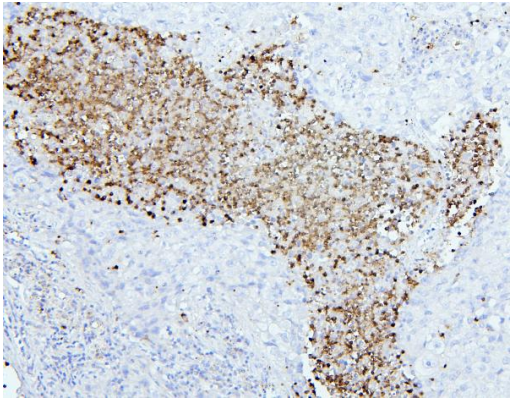
Properties

Form	Liquid
Purification	Affinity purification with immunogen.
Buffer	0.2% Na ₂ HPO ₄ , 0.9% NaCl, 0.05% Sodium azide and 4% Trehalose.
Preservative	0.05% Sodium azide
Stabilizer	4% Trehalose
Concentration	0.5 mg/ml
Storage instruction	For continuous use, store undiluted antibody at 2-8°C for up to a week. For long-term storage, aliquot and store at -20°C or below. Storage in frost free freezers is not recommended. Avoid repeated freeze/thaw cycles. Suggest spin the vial prior to opening. The antibody solution should be gently mixed before use.
Note	For laboratory research only, not for drug, diagnostic or other use.

Bioinformation

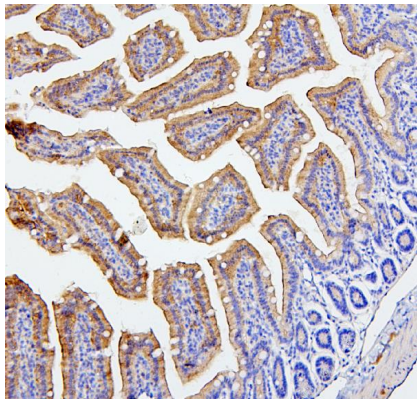
Gene Symbol	CEACAM5
Gene Full Name	carcinoembryonic antigen-related cell adhesion molecule 5
Background	This gene encodes a cell surface glycoprotein that represents the founding member of the carcinoembryonic antigen (CEA) family of proteins. The encoded protein is used as a clinical biomarker for gastrointestinal cancers and may promote tumor development through its role as a cell adhesion molecule. Additionally, the encoded protein may regulate differentiation, apoptosis, and cell polarity. This gene is present in a CEA family gene cluster on chromosome 19. Alternative splicing results in multiple transcript variants. [provided by RefSeq, Jul 2015]
Function	Cell surface glycoprotein that plays a role in cell adhesion and in intracellular signaling. Receptor for E.coli Dr adhesins. [UniProt]
Calculated Mw	77 kDa
PTM	Complex immunoreactive glycoprotein with a MW of 180 kDa comprising 60% carbohydrate. [UniProt]
Cellular Localization	Cell membrane; Lipid-anchor, GPI-anchor. [UniProt]

Images



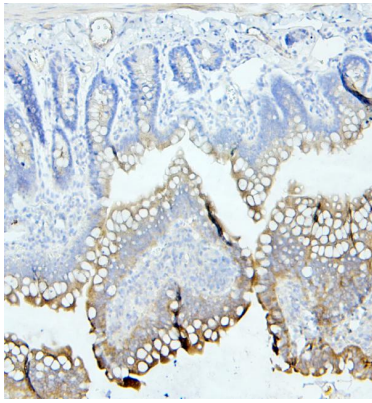
ARG41923 anti-CD66e / CEA antibody IHC-P image

Immunohistochemistry: Paraffin-embedded Human lung cancer tissue. Antigen Retrieval: Heat mediation was performed in EDTA buffer (pH 8.0). The tissue section was blocked with 10% goat serum. The tissue section was then stained with ARG41923 anti-CD66e / CEA antibody at 1 µg/ml dilution, overnight at 4°C.



ARG41923 anti-CD66e / CEA antibody IHC-P image

Immunohistochemistry: Paraffin-embedded Mouse intestine tissue. Antigen Retrieval: Heat mediation was performed in EDTA buffer (pH 8.0). The tissue section was blocked with 10% goat serum. The tissue section was then stained with ARG41923 anti-CD66e / CEA antibody at 1 µg/ml dilution, overnight at 4°C.



ARG41923 anti-CD66e / CEA antibody IHC-P image

Immunohistochemistry: Paraffin-embedded Rat intestine tissue.
Antigen Retrieval: Heat mediation was performed in EDTA buffer (pH 8.0). The tissue section was blocked with 10% goat serum. The tissue section was then stained with ARG41923 anti-CD66e / CEA antibody at 1 µg/ml dilution, overnight at 4°C.