

ARG41917 anti-NUP35 antibody

Package: 100 µl
Store at: -20°C

Summary

| | |
|---------------------|---|
| Product Description | Rabbit Polyclonal antibody recognizes NUP35 |
| Tested Reactivity | Hu |
| Tested Application | FACS, WB |
| Host | Rabbit |
| Clonality | Polyclonal |
| Isotype | IgG |
| Target Name | NUP35 |
| Species | Human |
| Immunogen | KLH-conjugated synthetic peptide between aa. 289-318 of Human NUP35. |
| Conjugation | Un-conjugated |
| Alternate Names | NUP53; Nuclear pore complex protein Nup53; MP44; Mitotic phosphoprotein 44; Nucleoporin NUP53; 35 kDa nucleoporin; MP-44; Nucleoporin Nup35; NP44 |

Application Instructions

| Application table | Application | Dilution |
|-------------------|--|-------------|
| | FACS | 1:10 - 1:50 |
| | WB | 1:1000 |
| Application Note | * The dilutions indicate recommended starting dilutions and the optimal dilutions or concentrations should be determined by the scientist. | |
| Positive Control | HeLa | |
| Observed Size | 36 kDa | |

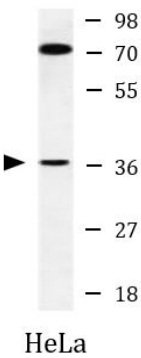
Properties

| | |
|---------------------|--|
| Form | Liquid |
| Purification | Purification with Protein A and immunogen peptide. |
| Buffer | PBS and 0.09% (W/V) Sodium azide. |
| Preservative | 0.09% (W/V) Sodium azide |
| Storage instruction | For continuous use, store undiluted antibody at 2-8°C for up to a week. For long-term storage, aliquot and store at -20°C or below. Storage in frost free freezers is not recommended. Avoid repeated freeze/thaw cycles. Suggest spin the vial prior to opening. The antibody solution should be gently mixed before use. |
| Note | For laboratory research only, not for drug, diagnostic or other use. |

Bioinformation

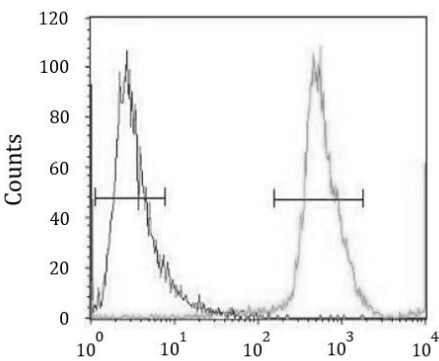
| | |
|-----------------------|---|
| Gene Symbol | NUP35 |
| Gene Full Name | nucleoporin 35kDa |
| Background | This gene encodes a member of the nucleoporin family. The encoded protein contains two membrane binding regions, is localized to the nuclear rim, and is part of the nuclear pore complex. All molecules entering or leaving the nucleus either diffuse through or are actively transported by the nuclear pore complex. Alternative splicing results in multiple transcript variants. Pseudogenes of this gene have been defined on chromosomes 7 and 10. [provided by RefSeq, Dec 2013] |
| Function | Functions as a component of the nuclear pore complex (NPC). NPC components, collectively referred to as nucleoporins (NUPs). Can play the role of both NPC structural components and of docking or interaction partners for transiently associated nuclear transport factors. May play a role in the association of MAD1 with the NPC. [UniProt] |
| Calculated Mw | 35 kDa |
| Cellular Localization | Nucleus, nuclear pore complex. Nucleus membrane; Peripheral membrane protein. Note=Tightly associated with the nuclear membrane and lamina. [UniProt] |

Images



ARG41917 anti-NUP35 antibody WB image

Western blot: 35 µg of HeLa cell lysate stained with ARG41917 anti-NUP35 antibody.



ARG41917 anti-NUP35 antibody FACS image

Flow Cytometry: HeLa cells stained with ARG41917 anti-NUP35 antibody (right histogram) or without primary antibody as control (left histogram), followed by incubation with FITC labelled secondary antibody.