

ARG41907 anti-TCTE1 antibody

Package: 100 µl
Store at: -20°C

Summary

Product Description	Rabbit Polyclonal antibody recognizes TCTE1
Tested Reactivity	Hu, Ms, Rat
Tested Application	WB
Host	Rabbit
Clonality	Polyclonal
Isotype	IgG
Target Name	TCTE1
Species	Human
Immunogen	Recombinant fusion protein corresponding to aa. 1-300 of Human TCTE1. (NP_872345.2)
Conjugation	Un-conjugated
Alternate Names	T-complex-associated testis-expressed protein 1; D6S46; FAP155; Tcte-1

Application Instructions

Application table	<table> <tr> <th>Application</th><th>Dilution</th></tr> <tr> <td>WB</td><td>1:500 - 1:2000</td></tr> </table>	Application	Dilution	WB	1:500 - 1:2000
Application	Dilution				
WB	1:500 - 1:2000				
Application Note	* The dilutions indicate recommended starting dilutions and the optimal dilutions or concentrations should be determined by the scientist.				
Positive Control	Mouse brain				
Observed Size	~ 62 kDa				

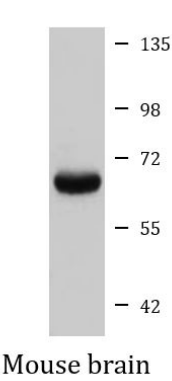
Properties

Form	Liquid
Purification	Affinity purified.
Buffer	PBS (pH 7.3), 0.02% Sodium azide and 50% Glycerol.
Preservative	0.02% Sodium azide
Stabilizer	50% Glycerol
Storage instruction	For continuous use, store undiluted antibody at 2-8°C for up to a week. For long-term storage, aliquot and store at -20°C. Storage in frost free freezers is not recommended. Avoid repeated freeze/thaw cycles. Suggest spin the vial prior to opening. The antibody solution should be gently mixed before use.
Note	For laboratory research only, not for drug, diagnostic or other use.

Bioinformation

Gene Symbol	TCTE1
Gene Full Name	t-complex-associated-testis-expressed 1
Calculated Mw	56 kDa
Cellular Localization	Cell projection, cilium, flagellum. Cytoplasm, cytoskeleton, flagellum axoneme. Note=Detected along the length of the sperm flagellum. [UniProt]

Images



ARG41907 anti-TCTE1 antibody WB image

Western blot: 25 µg of Mouse brain lysate stained with ARG41907 anti-TCTE1 antibody at 1:1000 dilution.