

ARG41859 anti-ERLIN2 / SPFH2 antibody

Package: 100 µl
Store at: -20°C

Summary

Product Description	Rabbit Polyclonal antibody recognizes ERLIN2 / SPFH2
Tested Reactivity	Hu, Ms
Tested Application	WB
Host	Rabbit
Clonality	Polyclonal
Isotype	IgG
Target Name	ERLIN2 / SPFH2
Species	Human
Immunogen	KLH-conjugated synthetic peptide between aa. 307-333 of Human ERLIN2 / SPFH2.
Conjugation	Un-conjugated
Alternate Names	C8orf2; SPFH2; Endoplasmic reticulum lipid raft-associated protein 2; Erlin-2; SPG18; SPFH domain-containing protein 2; Stomatin-prohibitin-flotillin-HflC/K domain-containing protein 2; NET32

Application Instructions

Application table	<table> <tr> <th>Application</th><th>Dilution</th></tr> <tr> <td>WB</td><td>1:1000</td></tr> </table>	Application	Dilution	WB	1:1000
Application	Dilution				
WB	1:1000				
Application Note	* The dilutions indicate recommended starting dilutions and the optimal dilutions or concentrations should be determined by the scientist.				
Positive Control	A431				
Observed Size	~ 40 kDa				

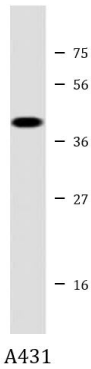
Properties

Form	Liquid
Purification	Purification with Protein A and immunogen peptide.
Buffer	PBS and 0.09% (W/V) Sodium azide.
Preservative	0.09% (W/V) Sodium azide
Storage instruction	For continuous use, store undiluted antibody at 2-8°C for up to a week. For long-term storage, aliquot and store at -20°C or below. Storage in frost free freezers is not recommended. Avoid repeated freeze/thaw cycles. Suggest spin the vial prior to opening. The antibody solution should be gently mixed before use.
Note	For laboratory research only, not for drug, diagnostic or other use.

Bioinformation

Gene Symbol	ERLIN2
Gene Full Name	ER lipid raft associated 2
Background	This gene encodes a member of the SPFH domain-containing family of lipid raft-associated proteins. The encoded protein is localized to lipid rafts of the endoplasmic reticulum and plays a critical role in inositol 1,4,5-trisphosphate (IP3) signaling by mediating ER-associated degradation of activated IP3 receptors. Mutations in this gene are a cause of spastic paraplegia-18 (SPG18). Alternatively spliced transcript variants encoding multiple isoforms have been observed for this gene. [provided by RefSeq, Feb 2012]
Function	Component of the ERLIN1/ERLIN2 complex which mediates the endoplasmic reticulum-associated degradation (ERAD) of inositol 1,4,5-trisphosphate receptors (IP3Rs) such as ITPR1. Promotes sterol-accelerated ERAD of HMGCR probably implicating an AMFR/gp78-containing ubiquitin ligase complex. Involved in regulation of cellular cholesterol homeostasis by regulation the SREBP signaling pathway. May promote ER retention of the SCAP-SREBF complex. [UniProt]
Calculated Mw	38 kDa
Cellular Localization	Endoplasmic reticulum membrane; Single-pass type II membrane protein. Note=Associated with lipid raft-like domains of the endoplasmic reticulum membrane. [UniProt]

Images



ARG41859 anti-ERLIN2 / SPFH2 antibody WB image

Western blot: 20 µg of A431 cell lysate stained with ARG41859 anti-ERLIN2 / SPFH2 antibody at 1:2000 dilution.