

## ARG41805 anti-CDC37 antibody

Package: 100 µl  
Store at: -20°C

### Summary

|                     |  |
|---------------------|--|
| Product Description | Rabbit Polyclonal antibody recognizes CDC37  |
| Tested Reactivity   | Hu, Ms, Rat  |
| Tested Application  | FACS, IHC-P, IP, WB  |
| Host                | Rabbit   |
| Clonality           | Polyclonal   |
| Isotype             | IgG  |
| Target Name         | CDC37  |
| Species             | Human  |
| Immunogen           | Synthetic peptide of Human CDC37.  |
| Conjugation         | Un-conjugated  |
| Alternate Names     | p50Cdc37; Hsp90 chaperone protein kinase-targeting subunit; Hsp90 co-chaperone Cdc37; P50CDC37 |

### Application Instructions

| Application table | Application  | Dilution       |
|-------------------|--|----------------|
|                   | FACS   | 1:50           |
|                   | IHC-P  | 1:50 - 1:200   |
|                   | IP   | 1:50           |
|                   | WB   | 1:500 - 1:2000 |
| Application Note  | * The dilutions indicate recommended starting dilutions and the optimal dilutions or concentrations should be determined by the scientist. |                |
| Positive Control  | Jurkat   |                |
| Observed Size     | ~ 45 kDa   |                |

### Properties

|                     |   |
|---------------------|---|
| Form                | Liquid  |
| Purification        | Affinity purified.  |
| Buffer              | PBS (pH 7.4), 150 mM NaCl, 0.02% Sodium azide and 50% Glycerol.   |
| Preservative        | 0.02% Sodium azide  |
| Stabilizer          | 50% Glycerol  |
| Storage instruction | For continuous use, store undiluted antibody at 2-8°C for up to a week. For long-term storage, aliquot and store at -20°C. Storage in frost free freezers is not recommended. Avoid repeated freeze/thaw cycles. Suggest spin the vial prior to opening. The antibody solution should be gently mixed before use. |

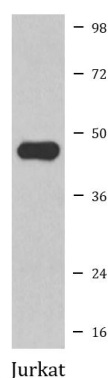
**Note**

For laboratory research only, not for drug, diagnostic or other use.

## Bioinformation

|                       |   |
|-----------------------|---|
| Gene Symbol           | CDC37   |
| Gene Full Name        | cell division cycle 37  |
| Background            | The protein encoded by this gene is highly similar to Cdc 37, a cell division cycle control protein of <i>Saccharomyces cerevisiae</i> . This protein is a molecular chaperone with specific function in cell signal transduction. It has been shown to form complex with Hsp90 and a variety of protein kinases including CDK4, CDK6, SRC, RAF-1, MOK, as well as eIF2 alpha kinases. It is thought to play a critical role in directing Hsp90 to its target kinases. [provided by RefSeq, Jul 2008] |
| Function              | Co-chaperone that binds to numerous kinases and promotes their interaction with the Hsp90 complex, resulting in stabilization and promotion of their activity. [UniProt]  |
| Calculated Mw         | 44 kDa  |
| PTM                   | Constitutively sumoylated by UBE2I. [UniProt]   |
| Cellular Localization | Cytoplasm. [UniProt]  |

## Images



ARG41805 anti-CDC37 antibody WB image

Western blot: Jurkat cell lysate stained with ARG41805 anti-CDC37 antibody.